

HAY MASTER TEDDER

HAY TEDDER PULL TYPE 9'
HAY TEDDER PULL TYPE 17'

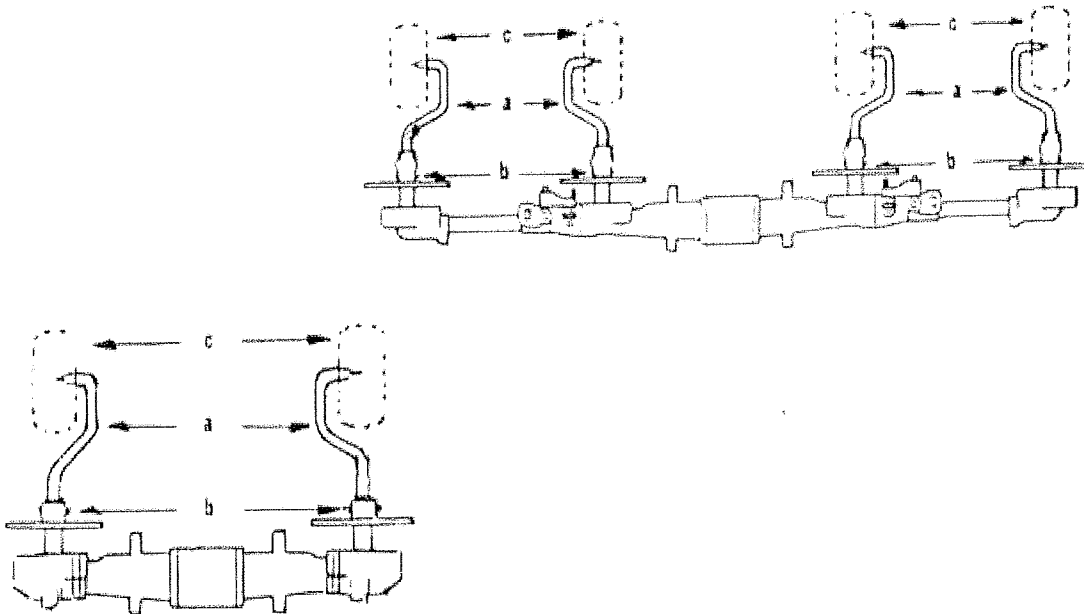
Parts List
Assembly Instructions



9' and 17' Tedder Assembly instructions

Axles

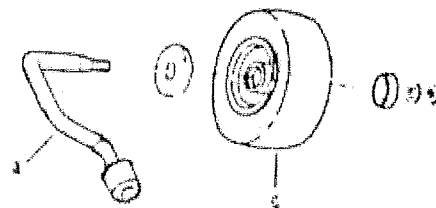
- Take out your tedder from the crate and turn it as shown hereunder
- open the carton box and the plastic bag with the hardware
- Now assemble the axles (a) to the discs and lock them with pin (b).
 - !! Position of axles : axles must be assembled as shown in the drawing.
 - !! Direction of axles : make sure that the tyres are as close as possible to the tractor.



Wheel assembly

Assemble on each fork the wheel (c) as follow :

- . Place the large inner cover diam. 25
- . Slide the wheel assembly w/bearings onto the axles (a)
- . Place the outer cover diam. 16
- . Place washer and tighten the self locking nut M 16



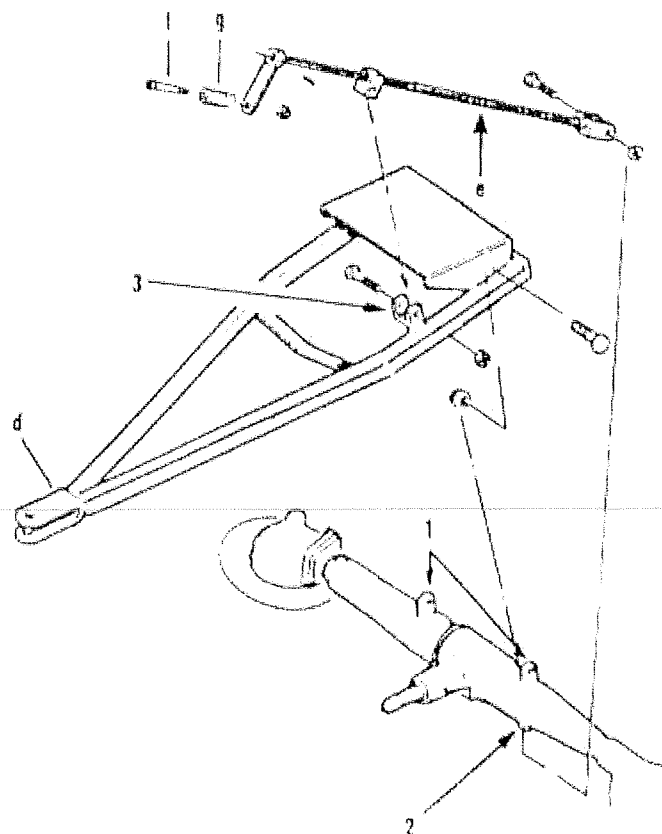
Draw bar and long screw

- Draw bar (d)

- Fix the draw bar (d) to the machine at point (1) by means of the n. 2 screws 16x80 and lock with self locking nuts M16

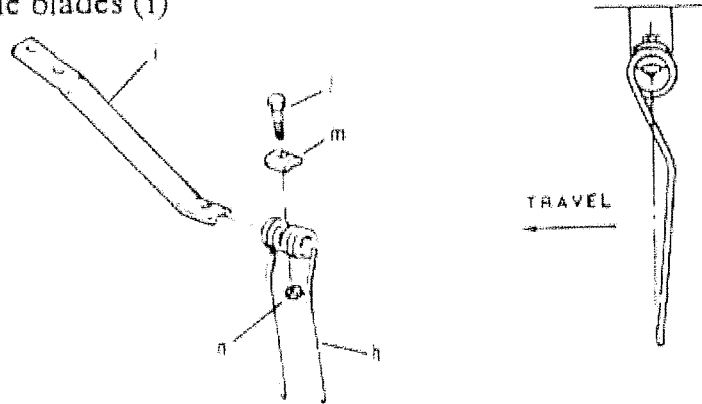
- Long screw (e)

- Fix the long screw (e) to the machine at point (2) and lock with screw M16x60 and locknut M16
- Now fix the long screw (e) to the draw bar in position (3) and lock with screw M16x80 and lock nut M16.
- Now assemble (f) and (g) to the long screw, locking with locknut M 12



Tines spring assembly

Fix all the tine springs (h) to the blades (i) and lock them by means of cap screw 12x45 (l), tine holder (m) and self locking nut M12 (n).

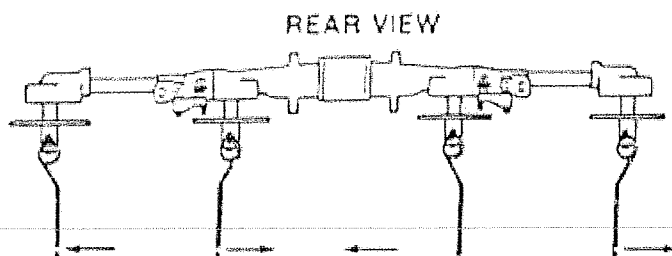


Always remember the working direction of the tine on the side of the machine. Tines must be assembled clockwise and anticlockwise in order to maintain the correct working direction (see drawings hereunder).

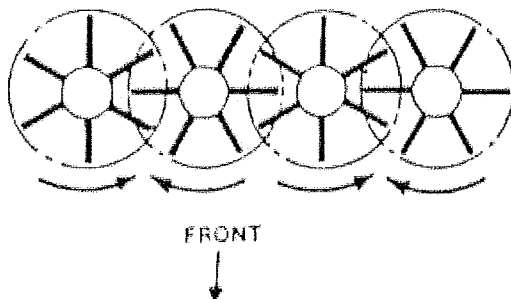
Fixing of blades to the machine

Now fix all blade assemblies to the machine, always considering the direction of travel, as shown in the drawings hereunder.

TEDDER 17'

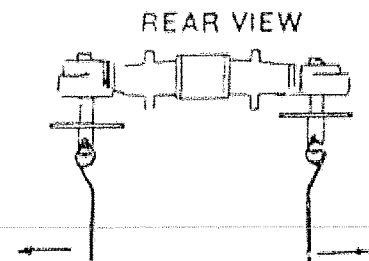


DIRECTION OF TRAVEL VIEWING FROM THE REAR

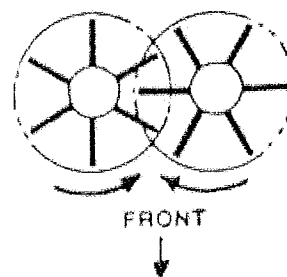


FRONT

TEDDER 9'



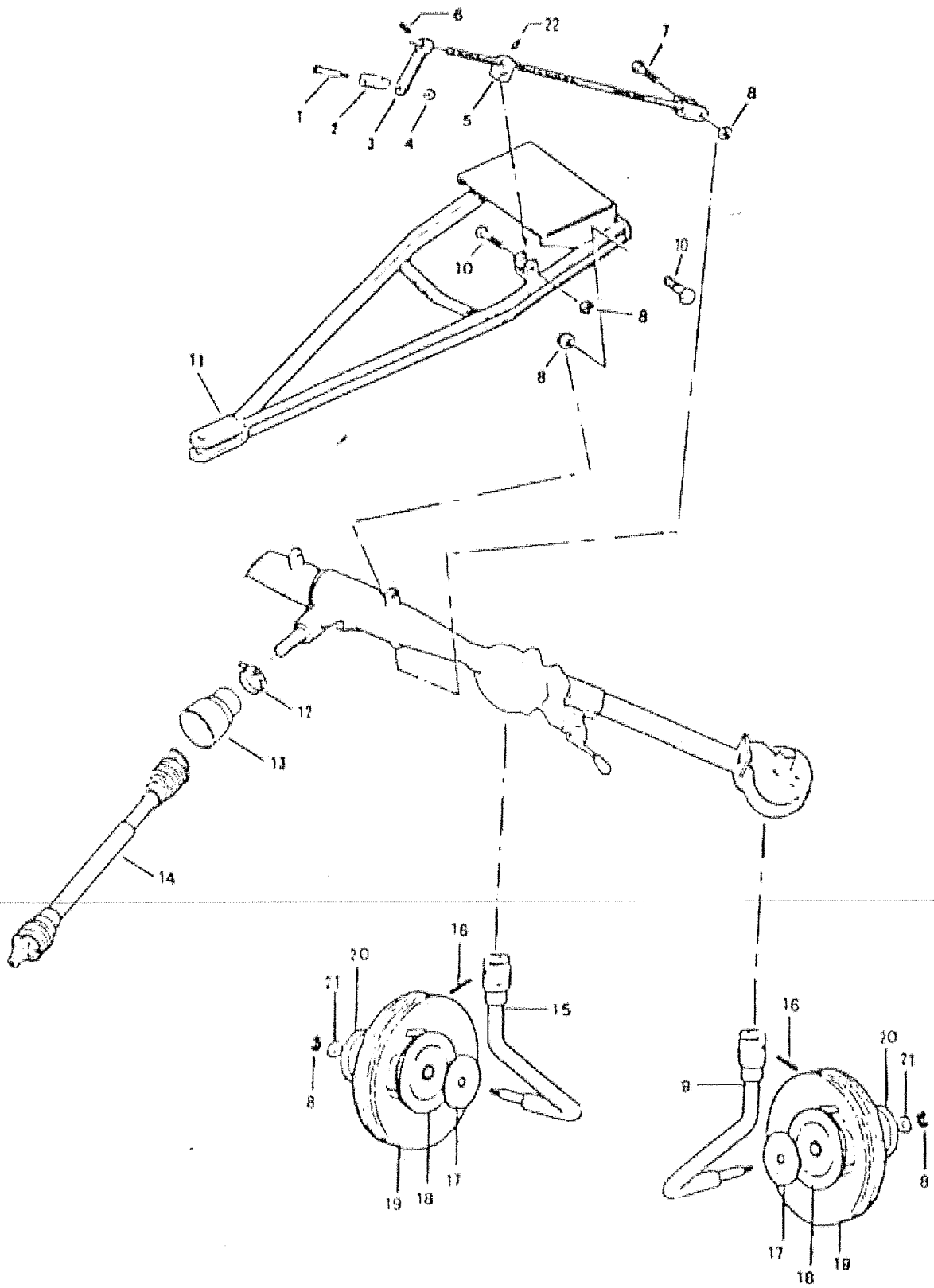
DIRECTION OF TRAVEL VIEWING FROM THE REAR



FRONT

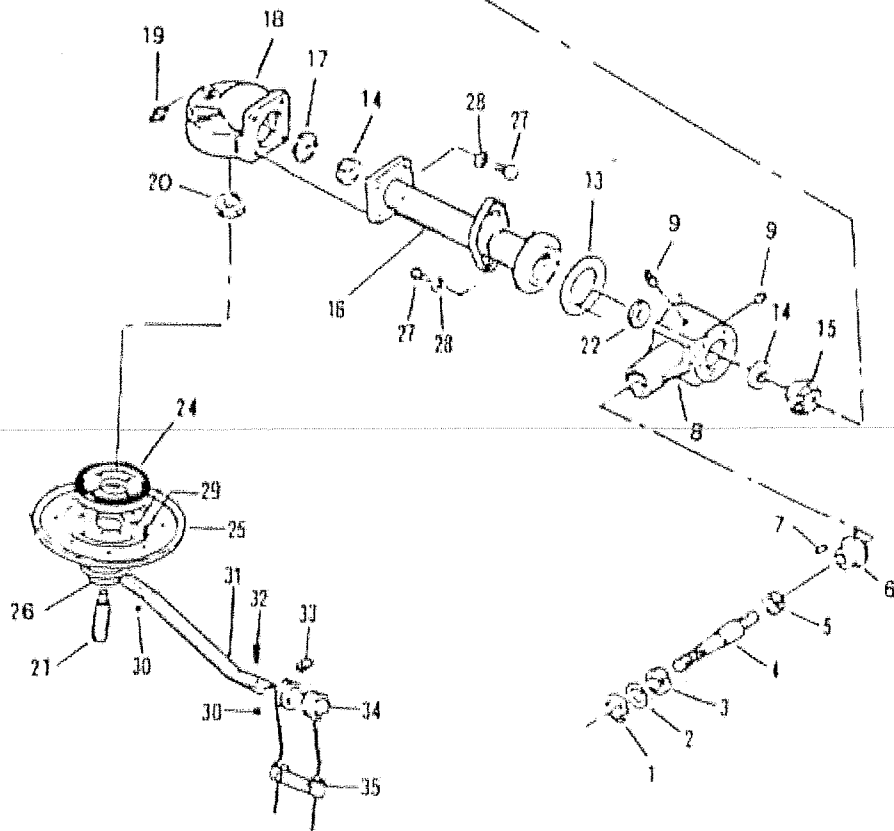
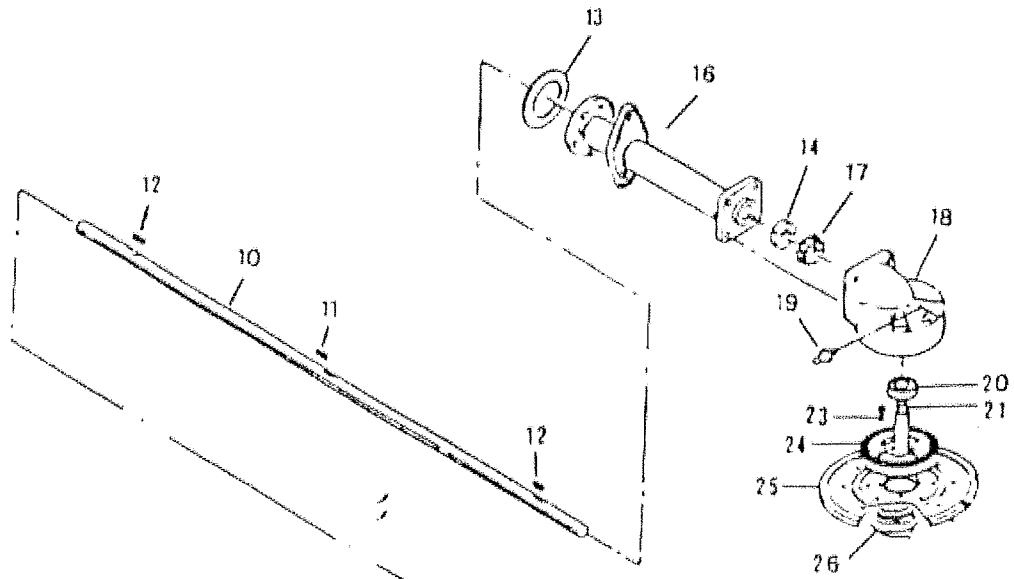
HAY MASTER TEDDER

CODE	REF	DESCRIPTION	QTY	CODE	REF	DESCRIPTION
10060348	1	SCREW M12X90	1			
16071150	2	PLASTIC HANDLE	1			
60043311	3	HANDLE LEVER 9'-17" diam 27	1			
10070012	4	SELF LOCKING NUT M12	1			
60086920	5	ADJ. SCREW 9'-17" diam 27	1			
10050021	6	ELASTIC PIN	1			
10060149	7	SCREW M16X60	1			
10070016	8	SELF LOCKING NUT M16	4			
60024610	9	RIGHT FORK MOD. 9'	1			
60024615		RIGHT FORK MOD. 17'	2			
10060152	10	SCREW M16X80	1			
60077622	11	DRAW BAR, FOR 9' TEDDER	1			
60077625		DRAW BAR, FOR 17' TEDDER	1			
15507898	12	CLAMP D100	1			
15501810	13	CARDAN PROTECTION	1			
15021302	14	CARDAN JOINT FOR 9'	1			
15021304		CARDAN JOINT FOR 17'	1			
60024620	15	LEFT FORK FOR 9'	1			
60024625		LEFT FORK FOR 17'	2			
10050067	16	ELASTIC PIN 10X55	2/4			
14030354	17	DUST CAP INNER	2/4			
14030352	18	RYM 3,50,6	2			
14071562		RYM 15,600,6	4			
14030356	19	TYRE W/TUBE 3,50,6	2			
14071566		TYRE W/TUBE 15,600,6	4			
14030355	20	DUST CAP OUTER	2/4			
10080216	21	WASHER 16	2/4			
10010011	22	GREASER 6MA	1			
14030350		COMPLETE WHEEL 3,50,6	2			
14071560		COMPLETE WHEEL 15,600,6	4			
60086910		COMPLETE ADJ. SCREW	1			



HAY MASTER TEDDER 9'

CODE	REF	DESCRIPTION	QTY	CODE	REF	DESCRIPTION	QTY
10040062	1	SEEGER D. 72	1				
11010368	2	WASHER 36X71X1.5	1				
12012227	3	BEARING 6207 2RS	1				
800600100	4	POWER FORCE SHAFT GT	1				
12012220	5	BEARING 6206	1				
50616116	6	CONICAL PINION Z=16	1				
10030016	7	PIN 7X8X35	1				
40617610	8	CENTRAL BOX	1				
10010003	9	CONICAL OIL PLUG 3/8	2				
603004010	10	CENTRAL SHAFT MOD. 9'	1				
10030017	11	PIN 7X8X40	1				
10030015	12	PIN 7X8X30	2				
11050270	13	BOX GASKET GT	2				
12012223	14	BEARING 6206 2RS	3				
506603030	15	CONICAL CROWN Z=23	1				
40616167	16	INT. ARM MOD. 9'	2				
50616117	17	CONICAL PINION Z=17	2				
40617660	18	OUTER BOX	2				
10010002	19	GREASER 10MA	2				
12012224	20	BEARING 8207	2				
600008020	21	OUTER SHORT SHAFT	2				
12053062	22	OIL SEAL 30X62X10	1				
10060324	23	SCREW 12MAX30	8				
40611134	24	CONICAL CROWN Z=34	1				
60014810	25	DISC	2				
40614510	26	HUB	2				
10060075	27	SCREW 12MAX30	20				
10080012	28	SPRING LOCKWASHER 12	20				
10060074	29	SCREW 12X30 GALV.	12				
10070012	30	SELF LOCKING NUT 12	36				
603061010	31	ARM	12				
10060081	32	SCREW 12X45	12				
50606100	33	TINE HOLDER	12				
13030310	34	TINE	12				
13010160	35	CLIP	12				



HAY MASTER TEDDER 17'

CODE	REF	DESCRIPTION	QTY	CODE	REF	DESCRIPTION	QTY
40617610	1	CENTRAL BOX	1	13030350	53	SPRING	2
50616116	2	CONICAL PINION Z=16	1	60009905	54	INNER PIPE	2
10030017	3	PIN 7X8X40	1	60043315	55	LEVER	2
12012220	4	BEARING 6206	1	13030360	56	SPRING	2
600600100	5	POWER FORCE GT	1	10090330	57	LOCK PIN	2
12012227	5	BEARING 6207 2RS	1	10050035	58	ELASTIC PIN 6x50	2
11010368	7	WASHER 36X71X1.5	1	60011605	59	RUBBER GUARD	2
10040062	8	SEEGER DIAM 72	1	10080208	60	WASHER DIAM 8	4
606004020	9	MAIN SHAFT	1	60058030	61	PLATE RH	1
10030017	10	PIN 7X8X40	3				
10030015	11	PIN 7X8X30	4				
10010003	12	OIL PLUG 3"	2				
50611023	13	CONICAL PINION Z=23	1				
12012223	14	BEARING 6206 2RS	5				
11050270	15	GASKET	2				
12053062	16	OIL SEAL 30X62X10	1				
10060215	17	SCREW 8x15	4				
10080012	18	LOCKWASHER 0 12	28				
10060075	19	SCREW 12X30	60				
40616176	20	OUTER WING MOD 17'	2				
10060078	21	SCREW 12X40	8				
60058031	22	PLATE LH	1				
50616114	23	CONICAL PINION Z=14	4				
50616020	24	PIVOT	2				
40617861	25	OUTER SUPPORT	2				
60679315	26	REINF. PIPE	1				
10010002	27	GREASER 10	6				
60058015	28	PIVOT	4				
10060015	29	CONICAL DOWEL 8X14	4				
11010315	30	SHIM	4				
10040034	31	SEEGER DIAM. 30	6				
15500525	32	JOINT	2				
10050065	33	ELASTIC PIN 10X50	2				
10050035		ELASTIC PIN 6X50	2				
606603080	34	OUTER WING LH	1				
606603075	35	OUTER WING RH	1				
16050120	36	BUSHING 35X30X20	4				
606012020	37	OUTER SHAFT	2				
40617660	38	OUTER BOX	2				
600008020	39	OUTER SHORT SHAFT	2				
40611142	40	CONICAL CROWN Z=42	4				
60014810	41	DISC	4				
40614510	42	HUB SUPPORT	4				
10060324	43	SCREW 12X30	16				
12012027	44	BEARING 6007 2RS	4				
11010304	45	WASHER 31X51X0.4	4				
602061006	46	ARM	24				
10070012	47	SELF LOCKING NUT 12	48				
13030310	48	TINE	24				
50606100	49	TINE HOLDER	24				
40060080	50	SCREW 12X45	24				
13010160	51	CLIP	24				
60009900	52	OUTER PIPE	2				

