

# LELY

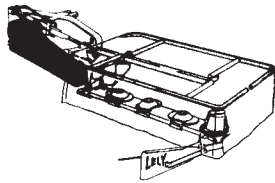
OPTIMO	type number type number numéro de type Typnummer	vanaf serienummer as from serial number après numéro de série ab Seriennummer
165	4.1201.0000.1	949 - 0526
	4.1201.0002.1	997 - 0501
	4.1201.0004.1	1010 - 0501
	4.1201.0005.1	10203 - 0501
	4.1201.0006.1	10402 - 0501
205	4.1202.0000.1	949 - 0501
	4.1202.0001.1	997 - 0501
	4.1202.0003.1	1010 - 0501
	4.1202.0004.1	10109 - 0501
	4.1202.0005.1	10402 - 0501

# EM

Inhoud  
Contents  
Index  
Inhalt

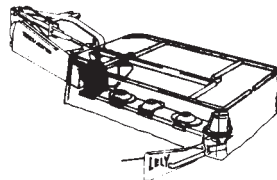
## OPTIMO

pagina  
page  
page  
Seite



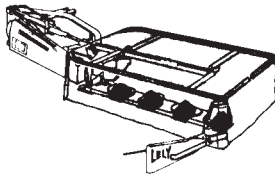
Snaaraandrijving  
V-belt drive  
Entraînement à courroies  
Keilriemenantrieb

01



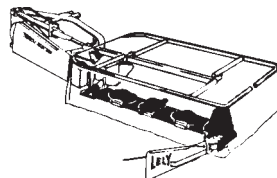
Tandwielkast  
Gearbox  
Boîte d'engrenages  
Getriebe

02



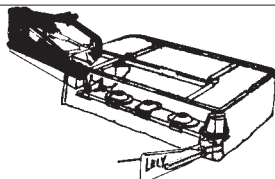
Maaielementen  
Cutting units  
Unités de fauchage  
Mäh-Einheiten

03



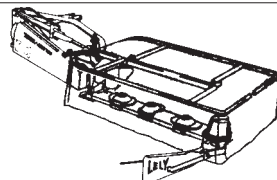
Maaibalk  
Cutter bar  
Barre de coupe  
Mähbalken

04



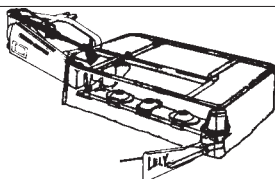
Driepuntsbok + freem  
Headstock + frame  
Tête d'attelage + châssis  
Dreipunktturm + Rahmen

05



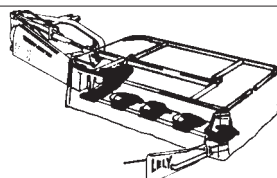
Uitslagbeveiliging  
Anti-shock device  
Dispositif anti-choc  
Ausklinkvorrichtung

06



Hydraulische cilinder  
Hydraulic ram  
Vérin hydraulique  
Hydraulikzylinder

07

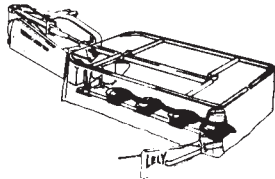


Glijlofften + slijtplaten  
Skids + wear plates  
Patins + plaques d'usure  
Kufen + Verschleissplatten

08

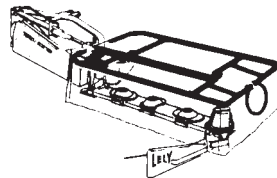
**LELY**

OPTIMO	type number type number numéro de type Typnummer	vanaf serienummer as from serial number après numéro de serie ab Seriennummer
165	4.1201.0000.1	949 - 0526
	4.1201.0002.1	997 - 0501
	4.1201.0004.1	1010 - 0501
	4.1201.0005.1	10203 - 0501
	4.1201.0006.1	10402 - 0501
205	4.1202.0000.1	949 - 0501
	4.1202.0001.1	997 - 0501
	4.1202.0003.1	1010 - 0501
	4.1202.0004.1	10109 - 0501
	4.1202.0005.1	10402 - 0501

**EM****Inhoud  
Contents  
Index  
Inhalt****OPTIMO****pagina  
page  
page  
Seite**

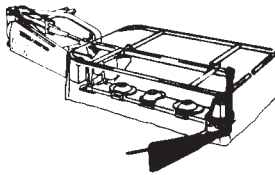
Maaibalkbescherming  
Cutter bar protection  
Protection-barre  
Mähwerkschutz

09



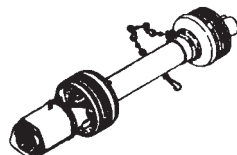
Beveiligingsfreem  
Protection frame  
Châssis de protection  
Schutzrahmen

10



Zwadbord + eindsteun  
Swath board + end support  
Planche à andain + support final  
Schwadbrett + Endstütze

11

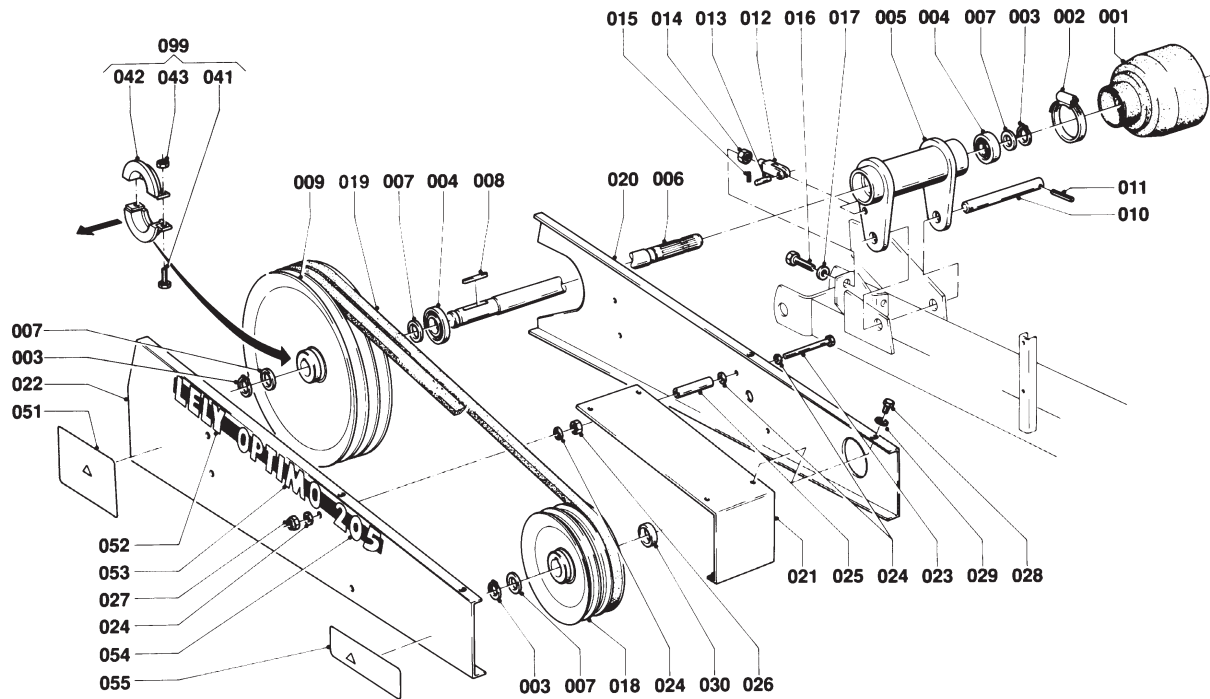
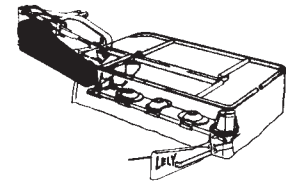


Koppelingsas  
PTO shaft  
Arbre de transmission  
Gelenkwelle

12

# LELY

OPTIMO	type number type number numéro de type Typnummer	vanaf serienummer as from serial number après numéro de serie ab Seriennummer
165	4.1201.0000.1	948 - 0714
205	4.1202.0000.1	949 - 0501



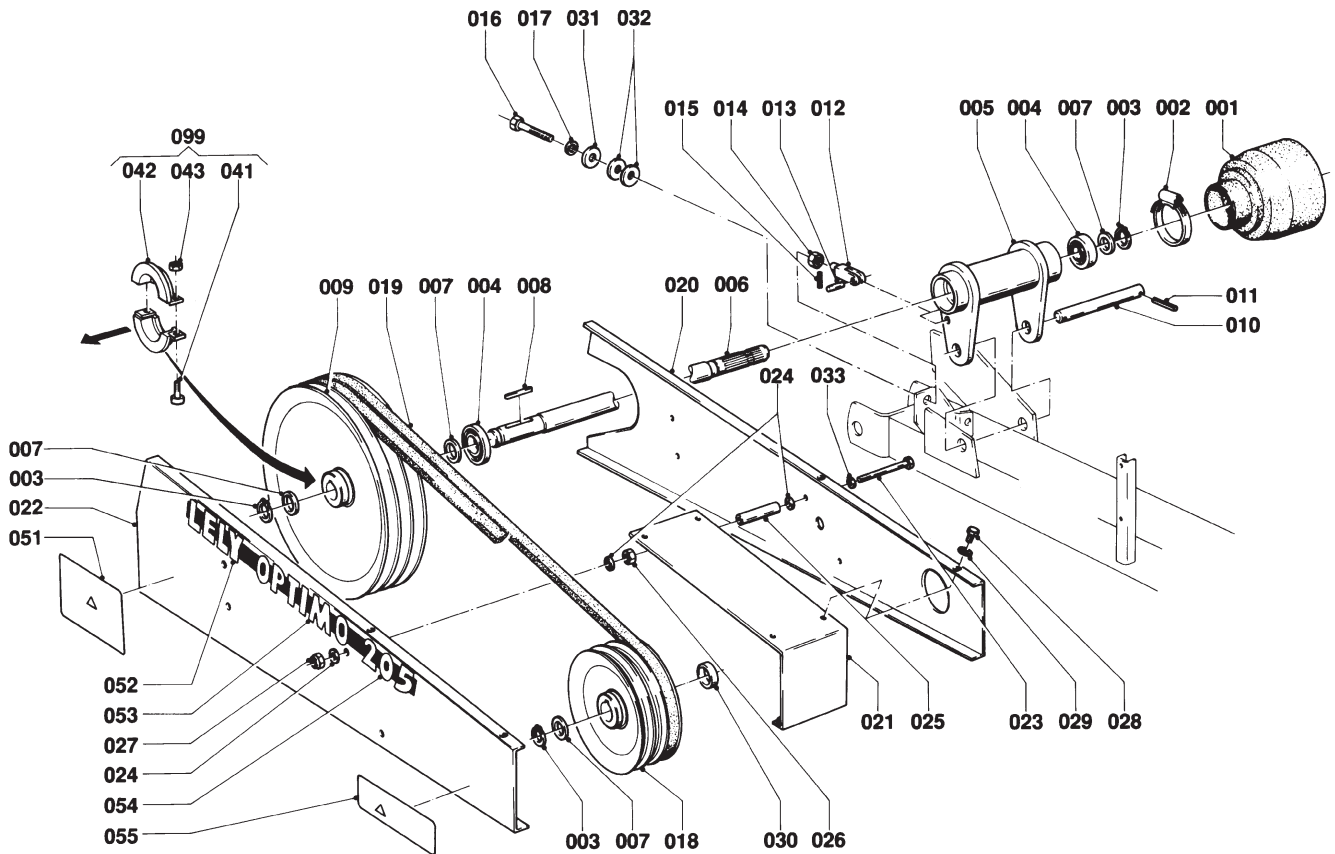
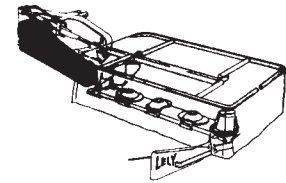
E001-07-00

REF.	ONDERDEELNR. PART NUMBER REFERENCE TEILNUMMER	AANTAL QUANTITY QUANTITE ANZAHL	
001	9.1161.0014.0	1	
002	9.1066.0010*0	1	Ø67-Ø89
003	9.1119.0019.5	3	35x2,50 DIN 471
004	9.1001.0087.2	2	6207-2RS1-C3
005	4.1201.0522.0	1	
006	4.1201.0498.0	1	
007	9.1052.0006.3	4	35x45x2,5 DIN 988
008	9.1071.0037.1	1	A10x8x80 DIN 6885
009	4.1201.0519.0	1	
010	4.1201.1478.0	1	
011	9.1070.0023.2	2	Ø8x50 DIN 1481
012	9.1038.0006*3	1	M12x48 DIN 71752
013	4.1201.1471.0	1	
014	9.1029.0008*0	1	M12 DIN 934-8
015	9.1070.0017.3	2	Ø6x30 DIN 1481
016	9.1113.0061*4	1	M12x80 DIN 933-8.8
017	9.1048.0012*6	1	A13 DIN 125 [—]
018	4.1201.1466.0	1	
019	9.1075.0002.4	3	SPB 2360
020	4.1201.1485.0	1	
021	4.1201.0500.0	1	
022	4.1201.1486.0	1	
023	9.1113.0123*3	4	M10x140 DIN 931-8.8
024	9.1049.0018.4	16	Nylon [—]
025	4.1201.1497.0	4	L= 103 mm

REF.	ONDERDEELNR. PART NUMBER REFERENCE TEILNUMMER	AANTAL QUANTITY QUANTITE ANZAHL	
026	9.1029.0005*4	4	M10 DIN 934-8
027	9.1030.0004*2	4	M10 DIN 985-8
028	9.1113.0013*5	6	M8x16 DIN 933-8.8
029	9.1051.0001*6	6	A8,2 DIN 6798 [////]
030	4.1201.1496.0	1	
041	9.1057.0003*2	2	M8x20 DIN 912-8.8
042	4.1201.2310.0	2	
043	9.1029.0004*3	2	M8 DIN 934-8
051	9.1170.0124.3	1	"NEEM VEILIGHEID IN ACHT"
052	9.1170.0253.6	1	"LELY"
053	9.1170.0255.1	1	"OPTIMO"
054	9.1170.0257.3	1	"165"
	9.1170.0258.4	1	"205"
055	9.1170.0052.1	1	"LET OP; DRAAIENDE DELEN"
099	4.1201.2300.0	1	= REF. 041-043 Hulpstuk voor pulley trekker Attachment for pulley puller Access. d' extracteur-poulie Zubehör für Abzieher

# LELY

OPTIMO	type number type number numéro de type Typnummer	vanaf serienummer as from serial number après numéro de série ab Seriennummer
165	4.1201.0000.1	981 - 0501
	4.1201.0002.1	997 - 0501
	4.1201.0004.1	1010 - 0501
205	4.1202.0000.1	981 - 0501
	4.1202.0001.1	997 - 0501
	4.1202.0003.1	1010 - 0501



E001-09-00

REF.	ONDERDEELNR. PART NUMBER REFERENCE TEILNUMMER	AANTAL QUANTITY QUANTITE ANZAHL
------	--	--

001	9.1161.0014.0	1
002	9.1066.0010*0	1
003	9.1119.0019.5	3
004	9.1001.0087.2	2
005	4.1201.0522.0	1
006	4.1201.0498.0	1
007	9.1052.0006*3	4
008	9.1071.0037.1	1
009	4.1201.0519.0	1
010	4.1201.1478.0	1
011	9.1070.0023.2	2
012	9.1038.0006*3	1
013	4.1201.1471.0	1
014	9.1029.0008*0	1
015	9.1070.0017.3	2
016	9.1113.0273*6	1
017	9.1048.0012*6	1
018	4.1201.1466.0	1
019	9.1075.0002.4	3
020	4.1201.1485.0	1
021	4.1201.0500.0	1
022	4.1201.1486.0	1
023	9.1113.0143*2	4
024	9.1049.0018.4	12
025	4.1201.1463.0	4

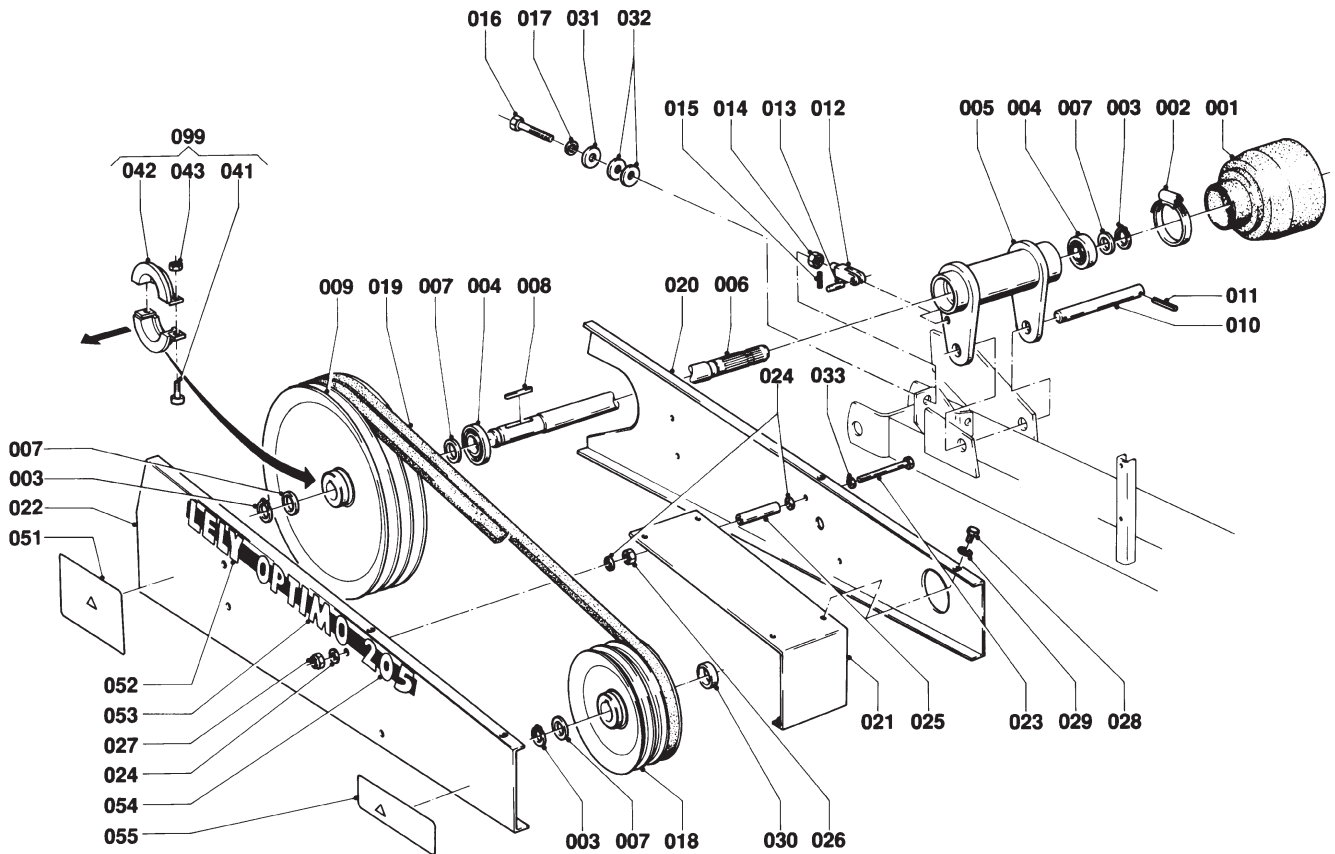
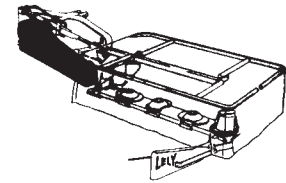
REF.	ONDERDEELNR. PART NUMBER REFERENCE TEILNUMMER	AANTAL QUANTITY QUANTITE ANZAHL
------	--	--

026	9.1029.0005*4	4
027	9.1030.0004*2	4
028	9.1113.0013*5	6
029	9.1051.0001*6	6
030	4.1201.1496.0	1
031	9.1048.0041*0	1
032	9.1048.0067.5	2
033	9.1048.0047.6	4
041	9.1057.0003*2	2
042	4.1201.2310.0	2
043	9.1029.0004*3	2
051	9.1170.0124.3	1
052	9.1170.0253.6	1
053	9.1170.0255.1	1
054	9.1170.0257.3	1
	9.1170.0258.4	1
055	9.1170.0052.1	1
099	4.1201.2300.0	1

= REF. 041-043  
Hulpstuk voor pulley trekker  
Attachment for pulley puller  
Access. d' extracteur-poulie  
Zubehör für Abzieher

# LELY

OPTIMO	type number type number numéro de type Typnummer	vanaf serienummer as from serial number après numéro de série ab Seriennummer
165	4.1201.0004.1	1010 - 0601
205	4.1202.0003.1	1010 - 0601



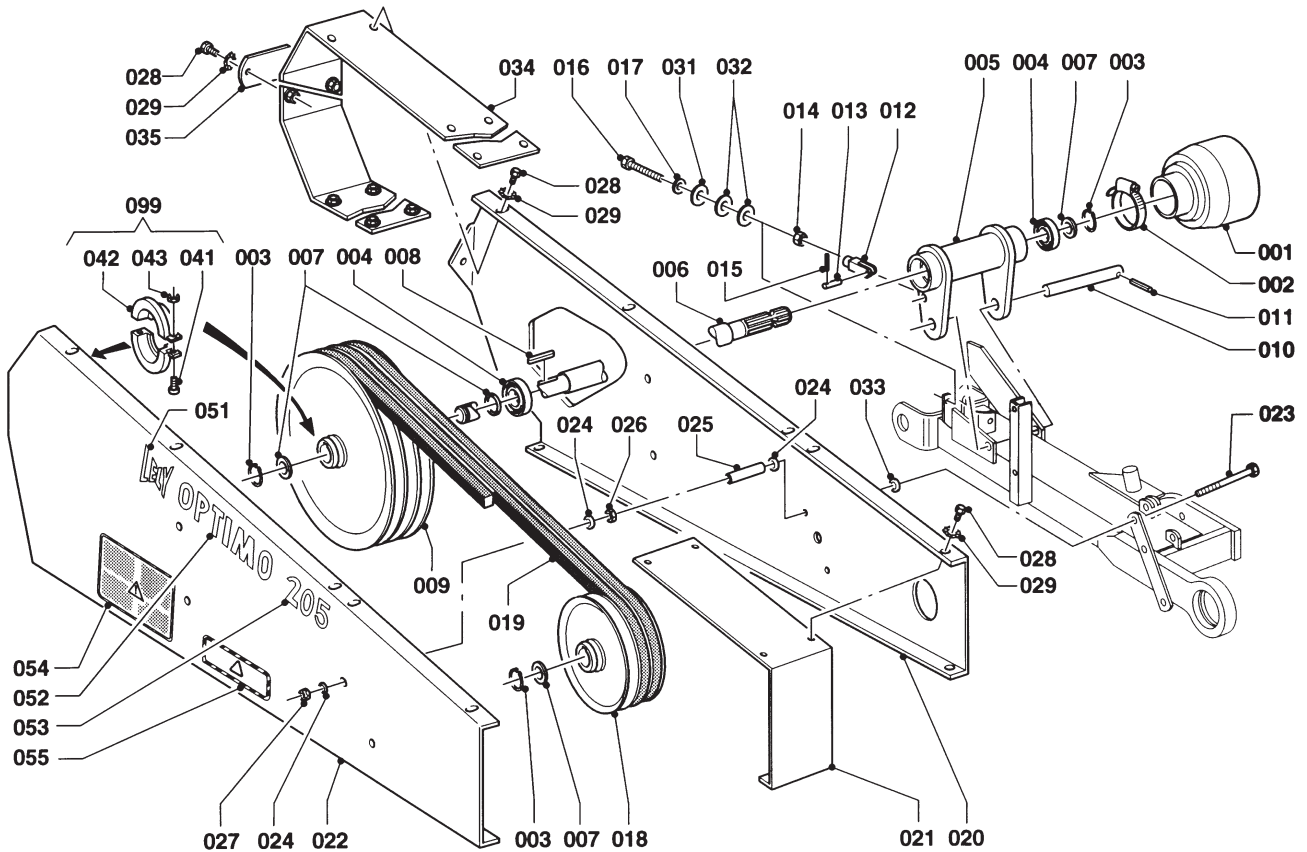
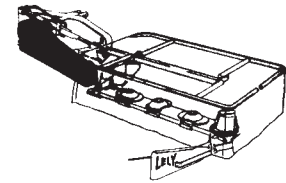
E001-09-00

REF.	ONDERDEELNR. PART NUMBER REFERENCE TEILNUMMER	AANTAL QUANTITY QUANTITE ANZAHL	
001	9.1161.0014.0	1	
002	9.1066.0010*0	1	Ø70-Ø90
003	9.1119.0019.5	3	35x2,50 DIN 471
004	9.1001.0087.2	2	6207 2RS1-C3
005	4.1201.0522.0	1	
006	4.1201.0498.0	1	
007	9.1052.0006.3	4	35x45x2,5 DIN 988 [ ]
008	9.1071.0037.1	1	A10x8x80 DIN 6885
009	4.1201.0519.0	1	
010	4.1201.1478.0	1	
011	9.1070.0023.2	2	Ø8x50 DIN 1481
012	9.1038.0006*3	1	M12x48 DIN 71752
013	4.1201.1471.0	1	
014	9.1029.0008*0	1	M12 DIN 934-8
015	9.1070.0017.3	2	Ø6x30 DIN 1481
016	9.1113.0273*6	1	M12x90 DIN 933-10.9
017	9.1048.0012*6	1	A13 DIN 125 [ ]
018	4.1201.1466.0	1	
019	9.1075.0002.4	3	SPB 2360
020	4.1201.1485.0	1	
021	4.1201.0500.0	1	
022	4.1201.1486.0	1	
023	9.1113.0143*2	4	M10x150 DIN 931-8.8
024	9.1049.0018.4	12	Nylon [ ]
025	4.1201.1463.0	4	L= 108 mm

REF.	ONDERDEELNR. PART NUMBER REFERENCE TEILNUMMER	AANTAL QUANTITY QUANTITE ANZAHL	
026	9.1029.0005*4	4	M10 DIN 934-8
027	9.1030.0004*2	4	M10 DIN 985-8
028	9.1113.0013*5	6	M8x16 DIN 933-8.8
029	9.1051.0001*6	6	A8,2 DIN 6798 [ ]
031	9.1048.0041*0	1	A13 DIN 9021 [ ]
032	9.1048.0067.5	2	A13 DIN 9021 Nylon [ ]
033	9.1048.0047.6	4	A10,5 DIN 125 Nylon [ ]
041	9.1057.0003.2	2	M8x20 DIN 912-8.8
042	4.1201.2310.0	2	
043	9.1029.0004*3	2	M8 DIN 934-8
051	9.1170.0124.3	1	"NEEM VEILIGHEID IN ACHT"
052	9.1170.0253.6	1	"LELY"
053	9.1170.0255.1	1	"OPTIMO"
054	9.1170.0257.3	1	"165"
055	9.1170.0258.4	1	"205"
055	9.1170.0052.1	1	"LET OP; DRAAIENDE DELEN"
099	4.1201.2300.0	1	= REF. 041-043 Hulpstuk voor pulley trekker Attachment for pulley puller Access. d' extracteur-poulie Zubehör für Abzieher

# LELY

OPTIMO	type number type number numéro de type Typnummer	vanaf serienummer as from serial number après numéro de serie ab Seriennummer
165	4.1201.0005.1	10203 - 0501
205	4.1202.0004.1	10109 - 0501



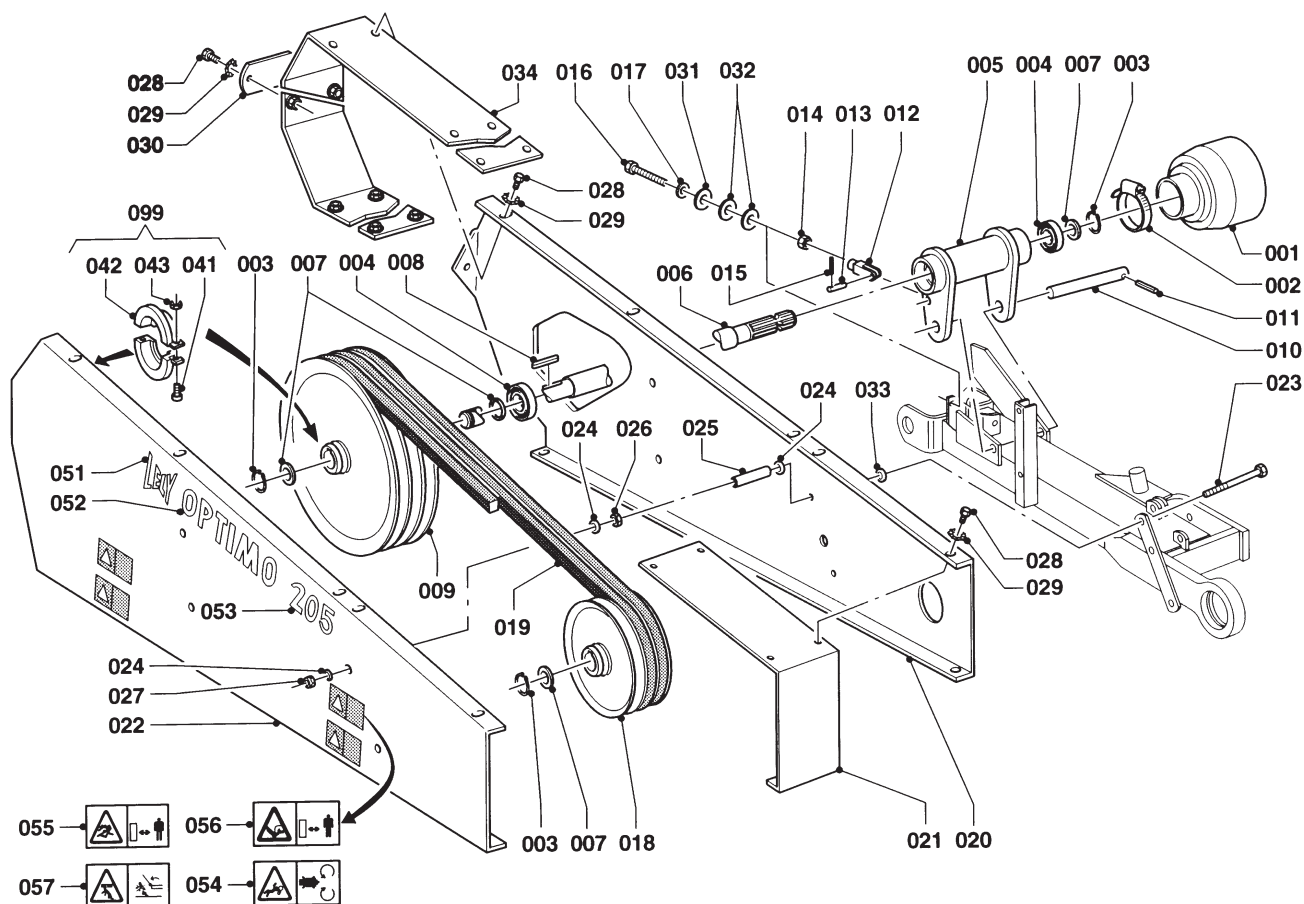
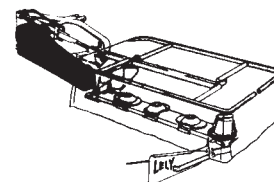
E055-01-01

REF.	ONDERDEELNR. PART NUMBER REFERENCE TEILNUMMER	AANTAL QUANTITY QUANTITE ANZAHL	
001	9.1161.0014.0	1	
002	9.1066.0010*0	1	Ø70-Ø90
003	9.1119.0019.5	3	35x2,50 DIN 471
004	9.1001.0087.2	2	6207 2RS1-C3
005	4.1201.0522.0	1	
006	4.1201.0498.0	1	
007	9.1052.0006.3	4	35x45x2,5 DIN 988 [—]
008	9.1071.0037.1	1	A10x8x80 DIN 6885
009	4.1201.0519.0	1	
010	4.1201.1478.0	1	
011	9.1070.0023.2	2	Ø8x50 DIN 1481
012	9.1038.0006*3	1	M12x48 DIN 71752
013	4.1201.1471.0	1	
014	9.1029.0008*0	1	M12 DIN 934-8
015	9.1070.0017.3	2	Ø6x30 DIN 1481
016	9.1113.0273*6	1	M12x90 DIN 933-10.9
017	9.1048.0012*6	1	A13 DIN 125 [—]
018	4.1201.1466.0	1	
019	9.1075.0002.4	3	SPB 2360
020	4.1214.1489.0	1	
021	4.1201.0500.0	1	
022	4.1214.1490.0	1	
023	9.1113.0143*2	4	M10x150 DIN 931-8.8
024	9.1049.0018.4	12	Nylon [—]
025	4.1201.1463.0	4	

REF.	ONDERDEELNR. PART NUMBER REFERENCE TEILNUMMER	AANTAL QUANTITY QUANTITE ANZAHL	
026	9.1029.0005*4	4	M10 DIN 934-8
027	9.1030.0004*2	4	M10 DIN 985-8
028	9.1113.0013*5	20	M8x16 DIN 933-8.8
029	9.1051.0001*6	20	A8,2 DIN 6798 [     ]
031	9.1048.0041*0	1	A13 DIN 9021 [—]
032	9.1048.0067.5	2	A13 DIN 9021 Nylon [—]
033	9.1048.0047.6	4	A10,5 DIN 125 Nylon [—]
034	4.1214.0642.0	2	
035	4.1214.1488.0	1	
041	9.1057.0003.2	2	M8x20 DIN 912-8.8
042	4.1201.2310.0	2	
043	9.1029.0004*3	2	M8 DIN 934-8
051	9.1170.0253.6	1	"LELY"
052	9.1170.0371.5	1	"OPTIMO"
053	9.1170.0379.6	1	"165"
	9.1170.0372.6	1	"205"
054	9.1170.0124.3	1	"NEEM VEILIGHEID IN ACHT"
055	9.1170.0052.1	1	"LET OP; DRAAIENDE DELEN"
099	4.1201.2300.0	1	= REF. 041-043 Hulpstuk voor pulley trekker Attachment for pulley puller Access. d' extracteur-poulie Zubehör für Abzieher

# LELY

OPTIMO	type number type number numéro de type Typnummer	vanaf serienummer as from serial number après numéro de serie ab Seriennummer
165	4.1201.0005.1	10302 - 0591
165	4.1201.0006.1	10402 - 0501
205	4.1202.0004.1	10302 - 0678
205	4.1202.0005.1	10402 - 0501



E055-02-01

REF.	ONDERDEELNR. PART NUMBER REFERENCE TEILNUMMER	AANTAL QUANTITY QUANTITE ANZAHL
------	--	--

001	9.1161.0028.0	1
002	9.1066.0010*0	1
003	9.1119.0019.5	3
004	9.1001.0087.2	2
005	4.1201.0522.0	1
006	4.1201.0498.0	1
007	9.1052.0006.3	4
008	9.1071.0037.1	1
009	4.1201.0519.0	1
010	4.1201.1478.0	1
011	9.1070.0023.2	2
012	9.1038.0006*3	1
013	4.1201.1471.0	1
014	9.1029.0008*0	1
015	9.1070.0017.3	2
016	9.1113.0273*6	1
017	9.1048.0012*6	1
018	4.1201.1466.0	1
019	9.1075.0002.4	3
020	4.1214.1489.0	1
021	4.1201.0500.0	1
022	4.1214.1490.0	1
023	9.1113.0143*2	4
024	9.1049.0018.4	12
025	4.1201.1463.0	4
026	9.1029.0005*4	4
027	9.1030.0004*2	4

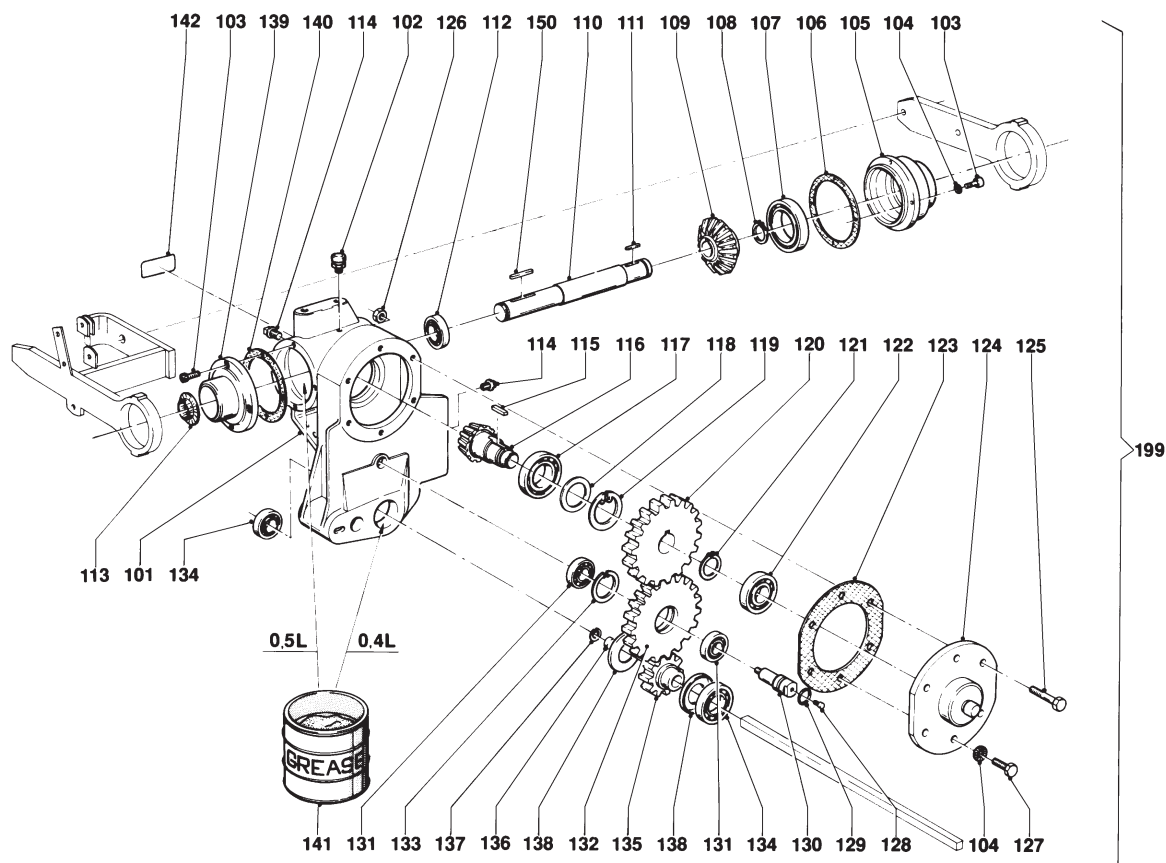
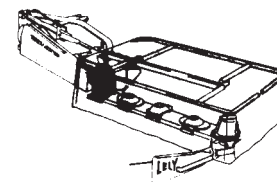
REF.	ONDERDEELNR. PART NUMBER REFERENCE TEILNUMMER	AANTAL QUANTITY QUANTITE ANZAHL
------	--	--

028	9.1113.0341*3	20
029	9.1051.0001.6	20
030	4.1214.1488.0	1
031	9.1048.0041*0	1
032	9.1048.0067.5	2
033	9.1048.0047.6	4
034	4.1214.0642.0	2
041	9.1057.0003.2	2
042	4.1201.2310.0	2
043	9.1029.0004*3	2
051	9.1170.0200.2	1
052	9.1170.0371.5	1
053	9.1170.0379.6	1
	9.1170.0372.6	1
054	9.1170.0407.6	1
055	9.1170.0410.2	1
056	9.1170.0419.4	1
057	9.1170.0420.5	1
099	4.1201.2300.0	1

= REF. 041-043  
Hulpstuk voor pulley trekker  
Attachment for pulley puller  
Access. d' extracteur-poulie  
Zubehör für Abzieher

# LELY

OPTIMO	type number type number numéro de type Typnummer	vanaf serienummer as from serial number après numéro de série ab Seriennummer
165	4.1201.0000.1	958 - 0901
205	4.1202.0000.1	958 - 2851



E002-08-00

REF.	ONDERDEELNR. PART NUMBER REFERENCE TEILNUMMER	AANTAL QUANTITY QUANTITE ANZAHL
------	--	--

101	4.1201.0301.0	1
102	4.1201.1472.0	1 R1/4" SLW 16
103	9.1057.0010.2	8 M10x25 DIN 912-12.9
104	9.1051.0002.0	7 A10,5 DIN 6798 [//////]
105	4.1201.0303.0	1
106	4.1201.0311.0	(1) [D+D]
107	9.1001.0067.3	1 16016
108	9.1119.0019.5	1 35x2,50 DIN 471
109	4.1201.0314.0	1
110	4.1201.0304.0	1
111	9.1071.0021.6	1 A10x8x63 DIN 6885
112	9.1001.0087.2	1 6207 2RS-1-C3
113	9.1106.0009.1	1 Z207
114	9.1131.0001.3	2 R1/2"
115	9.1071.0039.3	1 B12x8x25 DIN 6885
116	4.1201.0321.0	1
117	9.1001.0059.2	1 6210 2RS
118	4.1201.0310.0	(1) [D+D]
119	9.1120.0014.6	1 90x3,00 DIN 472
120	4.1201.0320.0	1
121	9.1119.0020.6	1 42x1,75 DIN 471
122	9.1001.0019.4	1 6206
123	4.1201.0325.0	1
124	4.1201.0290.0	1
9.1150.0008.5	-	G1/4" SLW17

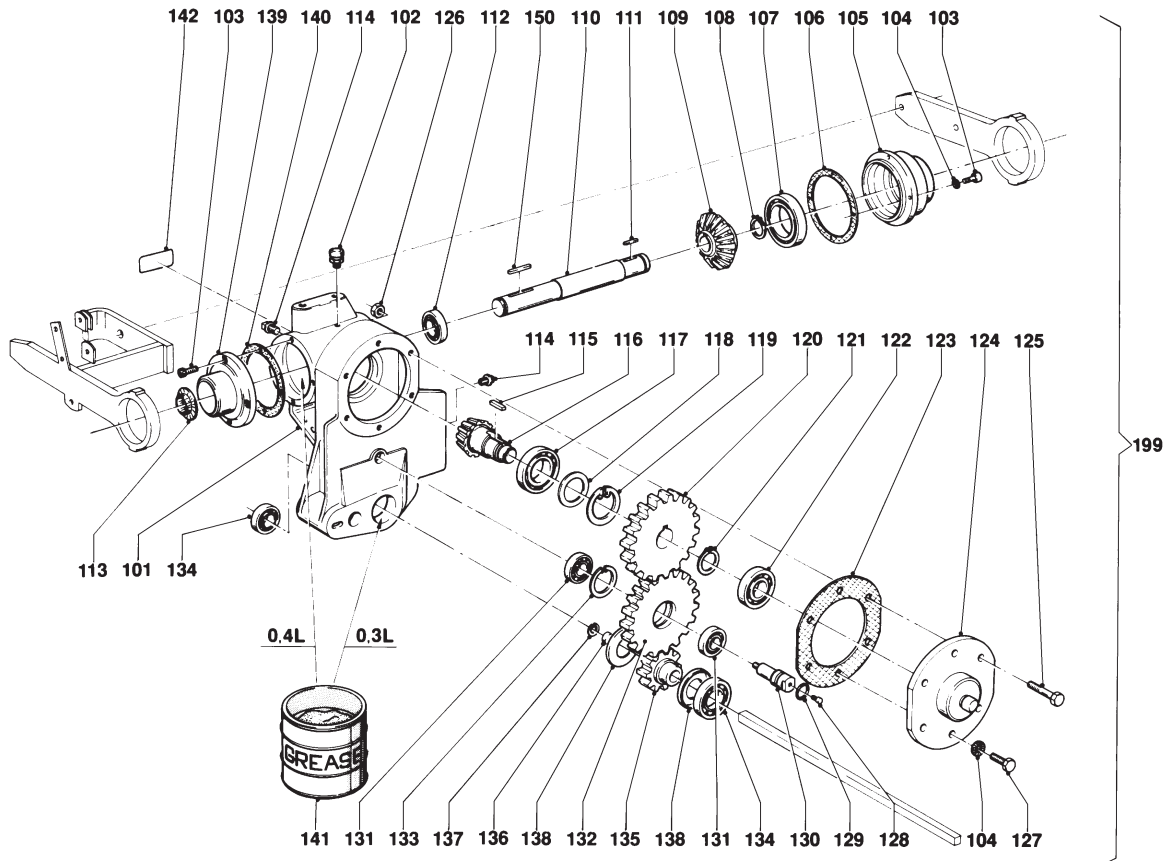
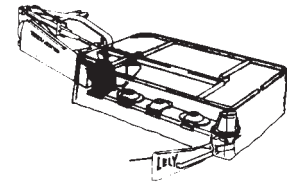
REF.	ONDERDEELNR. PART NUMBER REFERENCE TEILNUMMER	AANTAL QUANTITY QUANTITE ANZAHL
------	--	--

125	9.1113.0156*1	1 M10x85 DIN 931-8.8
126	9.1030.0004*2	3 M10 DIN 985-8
127	9.1113.0027.5	3 M10x20 DIN 933-8.8
128	9.1108.0034.3	1 R1/8"
129	9.1043.0013.5	1 OR 22x1,5
130	4.1201.0306.0	1 M12-L
131	9.1001.0090.5	2 6204-C3
132	4.1201.0307.0	1
133	9.1120.0002.1	1 42x1,75 DIN 472
134	9.1001.0068.4	2 6205 2RS-2-C4
135	4.1201.0317.0	1
136	4.1201.0329.0	1
137	9.1120.0028.6	1 18x1,00 DIN 472
138	9.1107.0009.0	2 6205 ZAV
139	4.1201.0302.0	1
140	4.1201.0328.0	1
141	9.1171.0034.3	(0,9L) 15 kg ESSO Fibrax EP370
142	9.1170.0064.6	1 "ESSO Fibrax EP370"
150	9.1071.0033.4	1 A10x8x70 DIN 6885
199	4.1201.0280.0	1 = REF. 101-142



# LELY

OPTIMO	type number type number numéro de type Typnummer	vanaf serienummer as from serial number après numéro de serie ab Seriennummer
165	4.1201.0000.1	972 - 0501
165	4.1201.0002.1	997 - 0501
205	4.1202.0000.1	971 - 0501
205	4.1202.0001.1	997 - 0501



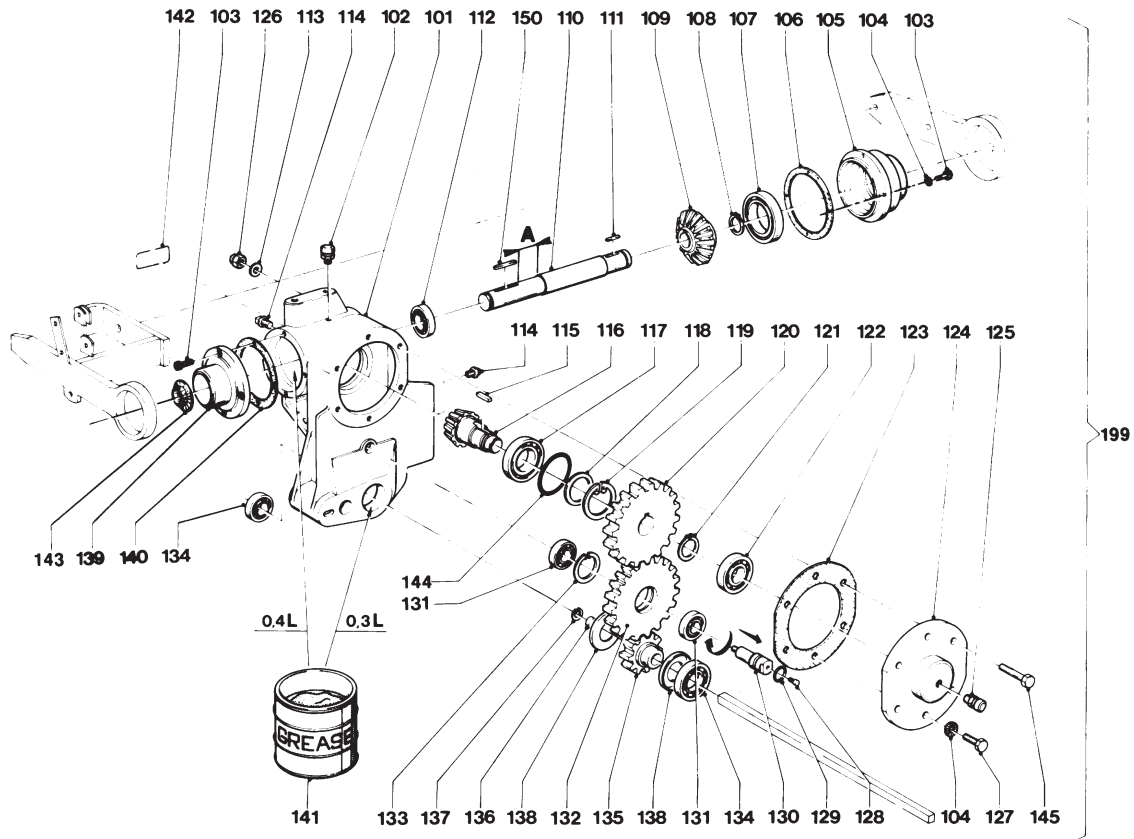
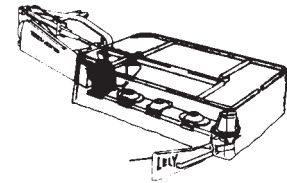
E002-08-01

REF.	ONDERDEELNR. PART NUMBER REFERENCE TEILNUMMER	AANTAL QUANTITY QUANTITE ANZAHL		
101	4.1201.0301.0	1		
102	4.1201.1472.0	1	R1/4" SLW 16	
103	9.1057.0010.2	8	M10x25 DIN 912-12.9	
104	9.1051.0002.0	7	A10,5 DIN 6798	[//////]
105	4.1201.0303.0	1		
106	4.1201.0311.0	(1)		[D+D]
107	9.1001.0067.3	1	16016	
108	9.1119.0019.5	1	35x2,50 DIN 471	
109	4.1201.0314.0	1		
110	4.1201.0304.0	1		
111	9.1071.0021.6	1	A10x8x63 DIN 6885	
112	9.1001.0087.2	1	6207 2RS-1-C3	
113	9.1106.0009.1	1	Z207	
114	9.1131.0001.3	2	R1/2"	
115	9.1071.0039.3	1	B12x8x25 DIN 6885	
116	4.1201.0321.0	1		
117	9.1001.0059.2	1	6210 2RS	
118	4.1201.0310.0	(1)		[D+D]
119	9.1120.0014.6	1	90x3,00 DIN 472	
120	4.1201.0320.0	1		
121	9.1119.0020.6	1	42x1,75 DIN 471	
122	9.1001.0019.4	1	6206	
123	4.1201.0325.0	1		
124	4.1201.0290.0	1		
	9.1150.0008.5	-	G1/4" SLW 17	
125	9.1113.0156*1	1	M10x85 DIN 931-10.9	
126	9.1030.0004*2	3	M10 DIN 985-8	

REF.	ONDERDEELNR. PART NUMBER REFERENCE TEILNUMMER	AANTAL QUANTITY QUANTITE ANZAHL	
127	9.1113.0027.5	3	M10x20 DIN 933-8.8
128	9.1108.0034.3	1	R1/8"
129	9.1043.0013.5	1	OR 22x1,5
130	4.1201.0306.0	1	M12-L
131	9.1001.0090.5	2	6204 C3
132	4.1201.0307.0	1	
133	9.1120.0002.1	1	42x1,75 DIN 472
134	9.1001.0068.4	2	6205 2RS-2-C4(VITON);HT-22B
135	4.1201.0317.0	1	
136	4.1201.0329.0	1	
137	9.1120.0028.6	1	18x1,00 DIN 472
138	9.1107.0009.0	2	6205 ZAV
139	4.1201.0302.0	1	
140	4.1201.0328.0	1	
141	9.1171.0039.1	(0,7L)	1 kg CALITHIA EP-T-0 SHELL
	9.1171.0040.2	(0,7L)	5 kg CALITHIA EP-T-0 SHELL
	9.1171.0041.3	(0,7L)	10 kg CALITHIA EP-T-0 SHELL
	9.1171.0031.0	(0,7L)	1 kg EHL 484 XC ESSO
	9.1171.0030.6	(0,7L)	5 kg EHL 484 XC ESSO
	9.1171.0029.5	(0,7L)	10 kg EHL 484 XC ESSO
142	9.1170.0303.0	1	"CALITHIA EP-T-0 SHELL"
	9.1170.0264.3	1	"EHL 484 XC ESSO"
150	9.1071.0033.4	1	A10x8x70 DIN 6885
199	4.1201.0280.0	1	= REF. 101-142

# LELY

OPTIMO	type number type number numéro de type Typnummer	vanaf serienummer as from serial number après numéro de série ab Seriennummer
165	4.1201.0002.1	1001 - 0601
165	4.1201.0004.1	1010 - 0501
205	4.1202.0001.1	1001 - 0576
205	4.1202.0003.1	1010 - 0501



E002-10-01

REF.	ONDERDEELNR. PART NUMBER REFERENCE TEILNUMMER	AANTAL QUANTITY QUANTITE ANZAHL
------	--	--

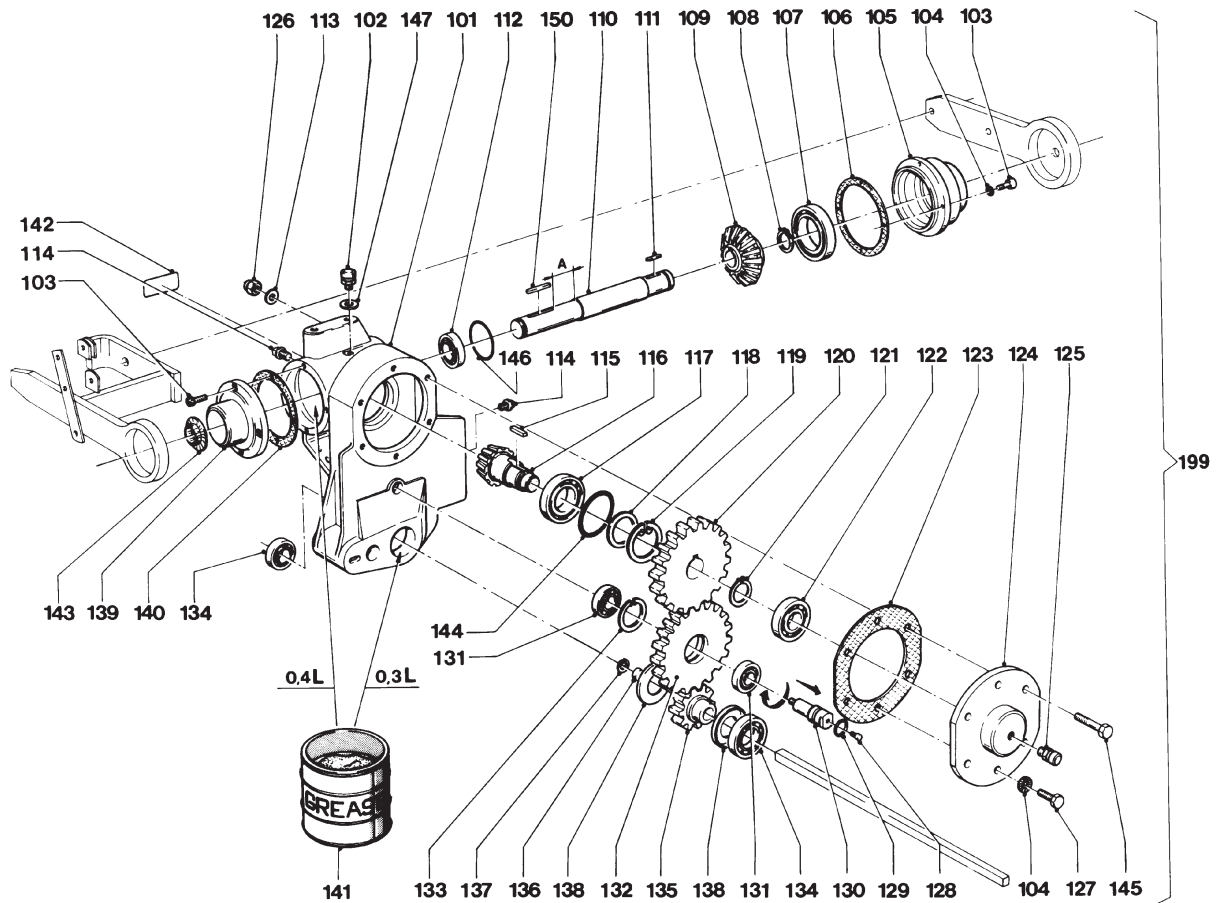
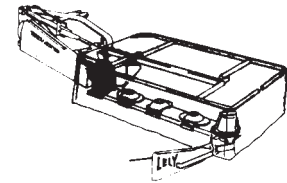
101	4.1201.0301.0	1
102	4.1201.1472.0	1 R1/4" SLW 16
103	9.1057.0010.2	8 M10x25 DIN 912-12.9
104	9.1051.0002*0	7 A10,5 DIN 6798 [//////]
105	4.1201.0303.0	1
106	4.1201.0311.0	(1) [D+D]
107	9.1001.0067.3	1 16016
108	9.1119.0019.5	1 35x2,50 DIN 471
109	4.1201.0314.0	1
110	4.1201.0304.0	1 A= 45,5 mm
111	9.1071.0021.6	1 A10x8x63 DIN 6885
112	9.1001.0087.2	1 6207 2RS-1-C3
113	9.1048.0007*1	~ A10,5 DIN 125 [———]
114	9.1131.0001.3	2 R1/2"
115	9.1071.0039.3	1 B12x8x25 DIN 6885
116	4.1201.0321.0	1
117	9.1001.0059.2	1 6210 2RS
118	4.1201.0310.0	(1) [D+D]
119	9.1120.0014.6	1 90x3,00 DIN 472
120	4.1201.0320.0	1
121	9.1119.0020.6	1 42x1,75 DIN 471
122	9.1001.0019.4	1 6206
123	4.1201.0325.0	1
124	4.1201.0312.0	1
125	9.1150.0008.5	1 G1/4" SLW 17
126	9.1030.0004*2	1 M10 DIN 985-8
127	9.1113.0027.5	3 M10x20 DIN 933-8.8

REF.	ONDERDEELNR. PART NUMBER REFERENCE TEILNUMMER	AANTAL QUANTITY QUANTITE ANZAHL
------	--	--

128	9.1108.0034.3	1 R1/8"
129	9.1043.0013.5	1 OR 22x1,5
130	4.1201.0306.0	1 M12-L
131	9.1001.0090.5	2 6204 C3
132	4.1201.0307.0	1
133	9.1120.0002.1	1 42x1,75 DIN 472
134	9.1001.0119.6	2 6205 2RS-2-C5(VITON);HT-22B
135	4.1201.0317.0	1
136	4.1201.0329.0	1
137	9.1120.0028.6	1 18x1,00 DIN 472
138	9.1107.0009.0	2 6205 ZAV
139	4.1201.0302.0	1
140	4.1201.0328.0	1
141	9.1171.0039.1	(0,7L) 1 kg CALITHIA EP-T-0 SHELL
	9.1171.0040.2	(0,7L) 5 kg CALITHIA EP-T-0 SHELL
	9.1171.0041.3	(0,7L) 10 kg CALITHIA EP-T-0 SHELL
	9.1171.0031.0	(0,7L) 1 kg EHL 484 XC ESSO
142	9.1170.0303.0	1 "CALITHIA EP-T-0 SHELL"
143	9.1106.0009.1	1 Z207
144	9.1043.0048.5	1 OR 89,5x3
145	9.1113.0156*1	1 M10x85 DIN 931-10.9
150	9.1071.0033.4	1 A10x8x70 DIN 6885
199	4.1201.0280.0	1 = REF. 101-145

# LELY

OPTIMO	type number type number numéro de type Typnummer	vanaf serienummer as from serial number après numéro de serie ab Seriennummer
165	4.1201.0004.1	1010 - 0601
	4.1201.0005.1	10203 - 0501
	4.1201.0006.1	10402 - 0501
205	4.1202.0003.1	1010 - 0601
	4.1202.0004.1	10109 - 0501
	4.1202.0005.1	10402 - 0501



E002-11-00

REF.	ONDERDEELNR. PART NUMBER REFERENCE TEILNUMMER	AANTAL QUANTITY QUANTITE ANZAHL
------	--	--

101	4.1201.0301.0	1
102	9.1150.0013.3	1
103	9.1057.0010.2	8
104	9.1051.0002.0	7
105	4.1201.0303.0	1
106	4.1201.0311.0	1
107	9.1001.0067.3	1
108	9.1119.0019.5	1
109	4.1201.0314.0	1
110	4.1201.0298.0	1
111	9.1071.0021.6	1
112	9.1001.0087.2	1
113	9.1048.0007*1	~
114	9.1131.0001.3	2
115	9.1071.0039.3	1
116	4.1201.0321.0	1
117	9.1001.0059.2	1
118	4.1201.0310.0	1
119	9.1120.0014.6	1
120	4.1201.0320.0	1
121	9.1119.0020.6	1
122	9.1001.0019.4	1
123	4.1201.0325.0	1
124	4.1201.0312.0	1
125	9.1150.0008.5	1
126	9.1030.0004*2	1
127	9.1113.0027*5	3

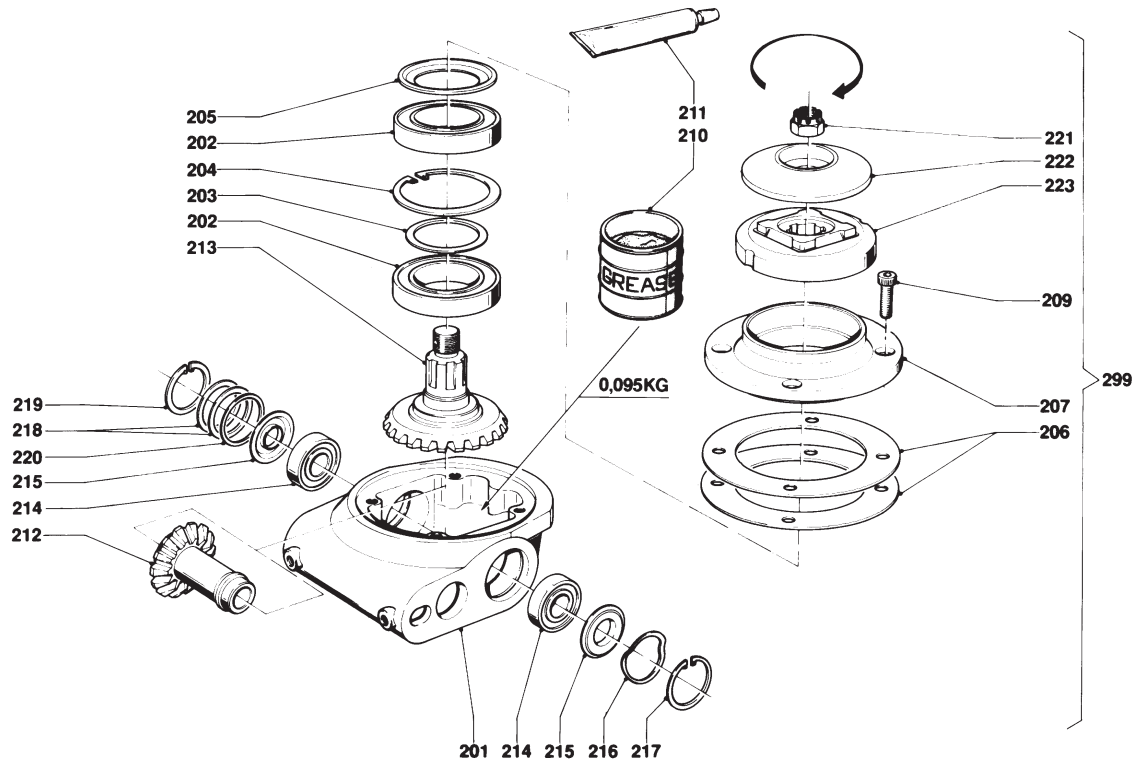
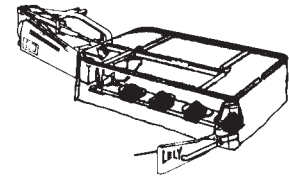
REF.	ONDERDEELNR. PART NUMBER REFERENCE TEILNUMMER	AANTAL QUANTITY QUANTITE ANZAHL
------	--	--

128	9.1108.0034.3	1
129	9.1043.0013.5	1
130	4.1201.0306.0	1
131	9.1001.0090.5	2
132	4.1201.0307.0	1
133	9.1120.0002.1	1
134	9.1001.0119.6	2
135	4.1201.0317.0	1
136	4.1201.0329.0	1
137	9.1120.0028.6	1
138	9.1107.0009.0	2
139	4.1201.0299.0	1
140	4.1201.0328.0	1
141	9.1171.0039.1	(0,7L)
	9.1171.0040.2	(0,7L)
	9.1171.0041.3	(0,7L)
142	9.1170.0303.0	1
143	9.1106.0009.1	1
144	9.1043.0048.5	1
145	9.1113.0156*1	1
146	9.1043.0050.0	1
147	9.1137.0401.5	1
150	9.1071.0033.4	1
199	4.1201.0280.0	1

R1/8"  
OR 22x1,5  
M12-L  
6204 C3  
42x1,75 DIN 472  
6205 2RS-2-C5(VITON);HT-22B  
18x1,00 DIN 472  
6205 ZAV  
10 kg ALVANIA WR-0 SHELL  
"ALVANIA WR-0 SHELL"  
Z207  
OR 89,5x3  
M10x85 DIN 931-10.9  
OR 72x2  
Ø14x20x1,5 Cu  
A10x8x70 DIN 6885  
= REF. 101-147

# LELY

OPTIMO	type number type number numéro de type Typnummer	vanaf serienummer as from serial number après numéro de série ab Seriennummer
165	4.1201.0000.1	907 - 0501
205	4.1202.0000.1	907 - 0501



E008-04-01

REF.	ONDERDEELNR. PART NUMBER REFERENCE TEILNUMMER	AANTAL QUANTITY QUANTITE ANZAHL
------	--	--

201	4.1201.0068.0	1
202	9.1001.0065.1	2
203	9.1052.0004.1	1
204	9.1120.0026.4	1
205	9.1107.0008.6	1
206	4.1290.2001.0	(1)
207	4.1201.0067.0	1
209	9.1057.0003.2	4
210	9.1171.0034.3	(0,095 kg)
211	9.1171.0020.3	1
212	4.1201.0069.0	1
213	4.1201.0063.0	1
214	9.1001.0064.0	2
215	9.1107.0007.5	2
216	9.1049.0013.6	1
217	9.1120.0027.5	1
218	9.1093.0065.0	2
219	9.1120.0002.1	1
220	4.1201.0061.0	1
221	9.1031.0013.3	1
222	4.1201.1467.0	1
223	4.1201.0062.0	1

[D+D]

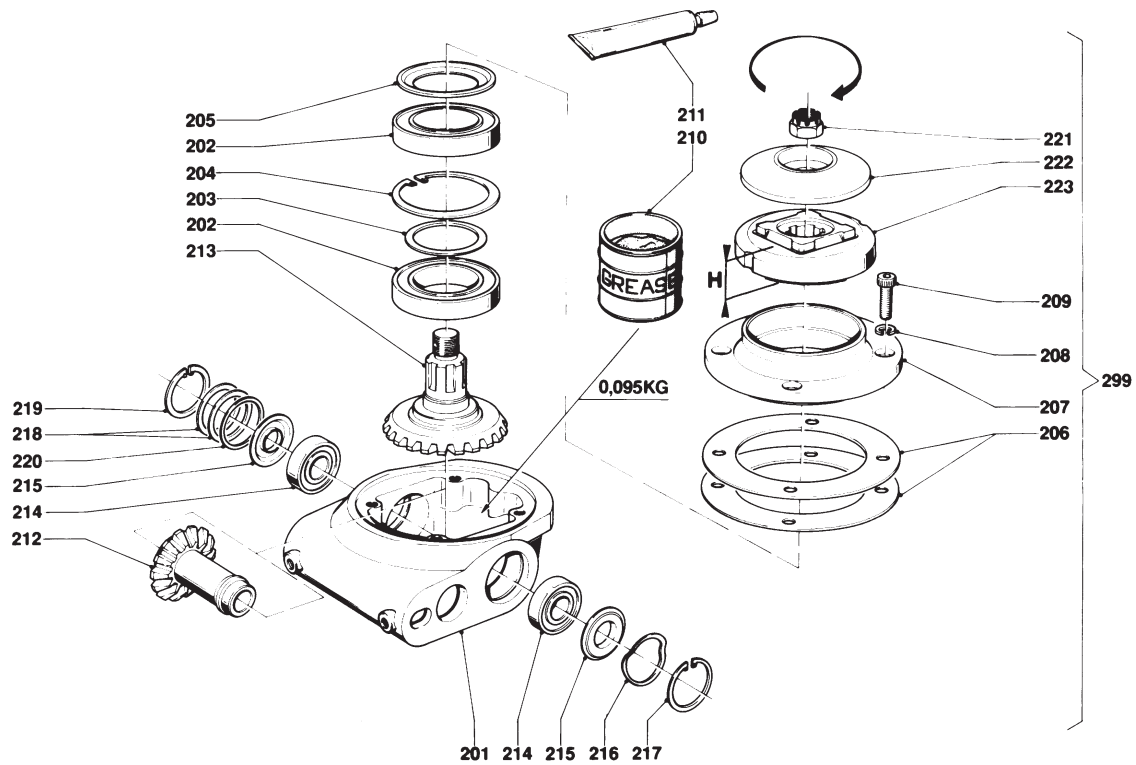
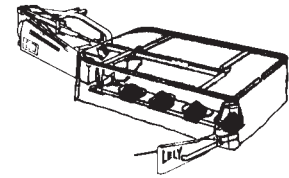
REF.	ONDERDEELNR. PART NUMBER REFERENCE TEILNUMMER	AANTAL QUANTITY QUANTITE ANZAHL
------	--	--

165/205

298	4.1201.0030.0	2 / 2	= REF. 201-223	[LD][x]
299	4.1201.0070.0	2 / 3	= REF. 201-223	[RD]

LELY

OPTIMO	type number type number numéro de type Typnummer	vanaf serienummer as from serial number après numéro de serie ab Seriennummer
165	4.1201.0000.1	987 - 0651
	4.1201.0002.1	997 - 0501
	4.1201.0004.1	1010 - 0501
205	4.1202.0000.1	989 - 0651
	4.1202.0001.1	997 - 0501
	4.1202.0003.1	1010 - 0501



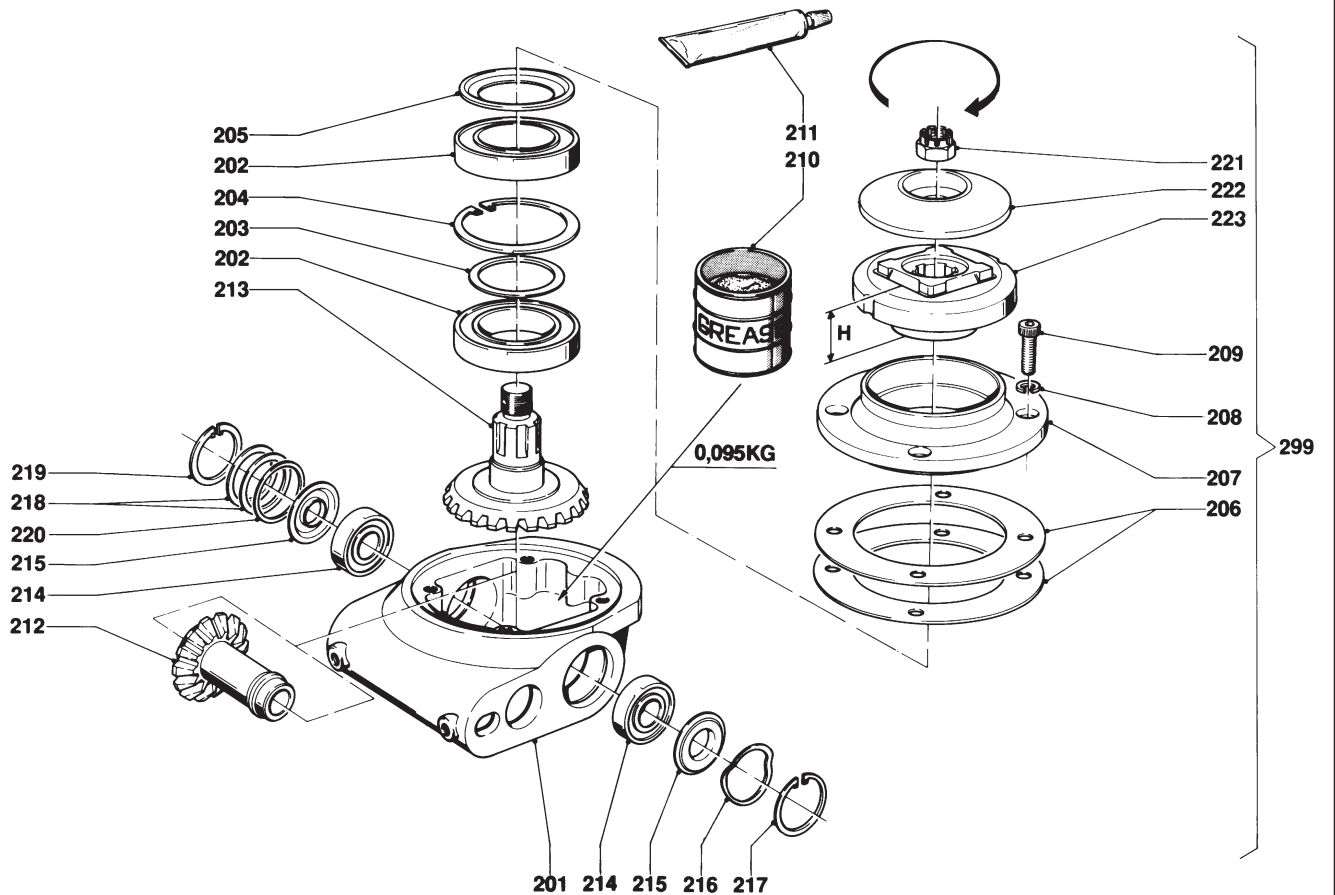
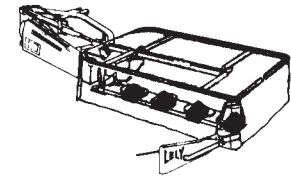
E008-04-02

REF.	ONDERDEELNR. PART NUMBER REFERENCE TEILNUMMER	AANTAL QUANTITY QUANTITE ANZAHL	
201	4.1201.0068.0	1	
202	9.1001.0065.1	2	6009 2RS-1-C4
203	9.1052.0004.1	1	S45x55x3 DIN 988
204	9.1120.0026.4	1	75x3,00 DIN 472
205	9.1107.0008.6	1	6009 ZAV
206	4.1290.2001.0	(1)	[D+D]
207	4.1201.0067.0	1	
208	9.1121.0024*1	4	8 DIN 7980 [—/—]
209	9.1057.0003.2	4	M8x20 DIN 912-8.8
210	9.1171.0039.1	(0,095 kg)	1 kg CALITHIA EP-T-0 SHELL
	9.1171.0040.2	(0,095 kg)	5 kg CALITHIA EP-T-0 SHELL
	9.1171.0041.3	(0,095 kg)	10 kg CALITHIA EP-T-0 SHELL
	9.1171.0031.0	(0,095 kg)	1 kg EHL 484 XC ESSO
	9.1171.0030.6	(0,095 kg)	5 kg EHL 484 XC ESSO
	9.1171.0029.5	(0,095 kg)	10 kg EHL 484 XC ESSO
211 SHELL	9.1171.0038.0	1	0,095 kg CALITHIA EP-T-0
	9.1171.0032.1	1	0,095 kg EHL 484 XC ESSO
212	4.1201.0069.0	1	
213	4.1201.0063.0	1	
214	9.1001.0064.0	2	6005 2RS-1-C4
215	9.1107.0007.5	2	6005 ZJV
216	9.1049.0013.6	1	46,5x40-G 6005

REF.	ONDERDEELNR. PART NUMBER REFERENCE TEILNUMMER	AANTAL QUANTITY QUANTITE ANZAHL	
217	9.1120.0027.5	1	47x1,75 V
218	9.1093.0065.0	2	37x47x0,3 DIN 988
219	9.1120.0002.1	1	47x1,75 DIN 472
220	4.1201.0061.0	1	
221	9.1031.0013.3	1	M18x1,5 DIN 937-22H
222	4.1201.1467.0	1	
223	4.1201.0062.0	1	H= 38 mm
		165/205	
298	4.1201.0030.0	2 / 2	= REF. 201-223 [LD][x]
299	4.1201.0070.0	2 / 3	= REF. 201-223 [RD]

LELY

OPTIMO	type number type number numéro de type Typnummer	vanaf serienummer as from serial number après numéro de serie ab Serienummer
165	4.1201.0004.1	1015 - 0701
	4.1201.0005.1	10203 - 0501
	4.1201.0006.1	10402 - 0501
205	4.1202.0003.1	1015 - 0751
	4.1202.0004.1	10109 - 0501
	4.1202.0005.1	10402 - 0501



E008-05-01

REF.	ONDERDEELNR. PART NUMBER REFERENCE TEILNUMMER	AANTAL QUANTITY QUANTITE ANZAHL
------	--	--

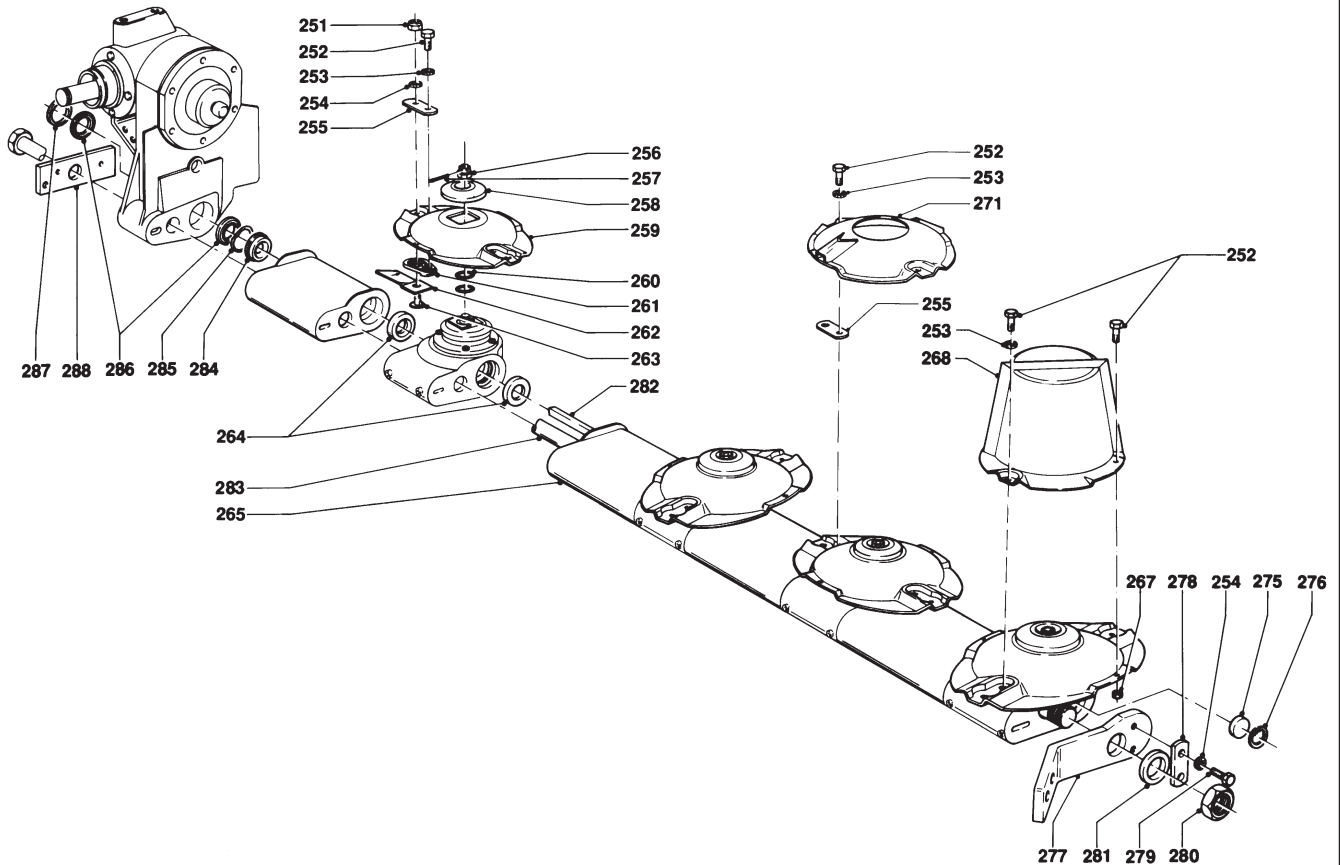
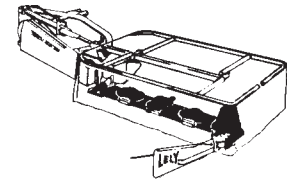
201	4.1201.0068.0	1	
202	9.1001.0065.1	2	
203	9.1052.0004.1	1	
204	9.1120.0026.4	1	
205	9.1107.0008.6	1	
206	4.1290.2001.0	1	[D+D]
207	4.1201.0067.0	1	
208	9.1121.0024*1	4	8 DIN 7980 [—]
209	9.1057.0003.2	4	M8x20 DIN 912-8.8
210	9.1171.0039.1	(0,095 kg)	1 kg ALVANIA WR-0 SHELL
	9.1171.0040.2	(0,095 kg)	5 kg ALVANIA WR-0 SHELL
	9.1171.0041.3	(0,095 kg)	10 kg ALVANIA WR-0 SHELL
211	9.1171.0038.0	1	0,095 kg ALVANIA WR-0 SHELL
212	4.1201.0069.0	1	
213	4.1220.0057.0	1	
214	9.1001.0064.0	2	6005 2RS-1-C4
215	9.1107.0007.5	2	6005 ZJV
216	9.1049.0013.6	1	46,5x40-G 6005
217	9.1120.0027.5	1	47x1,75 V
218	9.1093.0065.0	2	37x47x0,3 DIN 988
219	9.1120.0002.1	1	47x1,75 DIN 472
220	4.1201.0061.0	1	
221	9.1031.0013.3	1	M18x1,5 DIN 937-22H
222	4.1201.1467.0	1	
223	4.1225.0189.0	1	H= 44 mm

REF.	ONDERDEELNR. PART NUMBER REFERENCE TEILNUMMER	AANTAL QUANTITY QUANTITE ANZAHL
------	--	--

		165 205
299	4.1201.0030.0	2 2 = REF. 201-223 [LD][x]
299	4.1201.0070.0	2 3 = REF. 201-223 [RD]

# LELY

OPTIMO	type number type number numéro de type Typnummer	vanaf serienummer as from serial number après numéro de serie ab Seriennummer
165	4.1201.0000.1	927 - 0726
	4.1201.0002.1	997 - 0501
	4.1201.0004.1	1010 - 0501
205	4.1202.0000.1	927 - 0576
	4.1202.0001.1	997 - 0501
	4.1202.0003.1	1010 - 0501



E003-08-00

REF.	ONDERDEELNR. PART NUMBER REFERENCE TEILNUMMER	AANTAL QUANTITY QUANTITE ANZAHL		
------	--	--	--	--

165 205

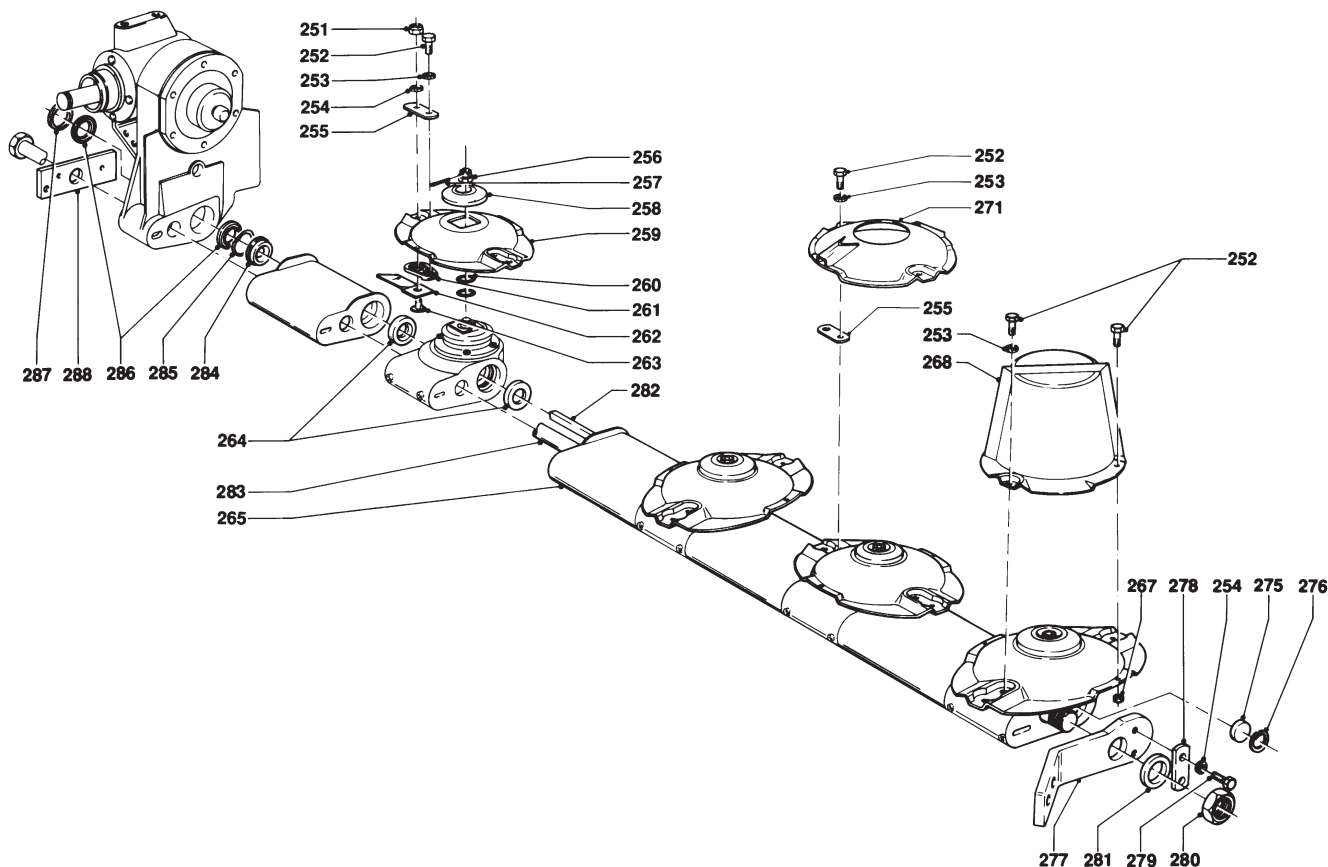
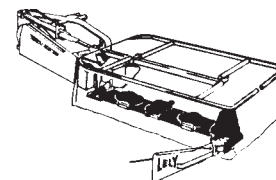
251	9.1030.0018*2	8 10	M10 DIN 985-10	
252	9.1113.0014*6	10 12	M8x20 DIN 933-8.8	
253	9.1051.0001.6	8 10	A8,2 DIN 6798	[////]
254	9.1051.0002.0	10 12	A10,5 DIN 6798	[////]
255	4.1201.1468.0	8 10		
256	9.1031.0013.3	(4) (5)	(= REF. 221)	M18x1,5
257	9.1072.0017.1	4 5	3x30 DIN 94	
258	4.1201.1467.0	(4) (5)	(= REF. 222)	
259	4.1201.1469.0	4 5		
260	9.1043.0020.5	8 10	OR 16x3	
261	4.1201.0142.0	8 10		
262	4.1201.1474.0	4 6	[RD]	L= 120 mm
	4.1201.1473.0	4 4	[LD][x]	L= 120 mm
263	4.1201.0141*0	8 10		
264	4.1201.0145.0	7 9		
265	4.1201.0143.0	4 4	L= 250 mm	
	4.1202.0148.0	- 1	L= 285 mm	
267	9.1030.0012*3	2 2	M8 DIN 985-8	
268	4.1201.0391.0	1 1		
271	4.1201.2410.0	(3) (4)		

REF.	ONDERDEELNR. PART NUMBER REFERENCE TEILNUMMER	AANTAL QUANTITY QUANTITE ANZAHL		
------	--	--	--	--

275	4.1201.0329.0	1		
276	9.1120.0028.6	1	18x1,00 DIN 472	
277	4.1201.0341.0	1		
278	4.1201.0135.0	1		
279	9.1113.0027*5	2	M10x20 DIN 933-8.8	
280	9.1029.0024*2	1	M30x1,5 DIN 934-8	
281	9.1052.0011.1	1	S30x42x2,5 DIN 988	
282	4.1201.0149.0	1	□ 165	
	4.1202.0149.0	1	□ 205	
283	4.1201.0401.0	1	○ 165	
	4.1202.0401.0	1	○ 205	
284	4.1201.0146.0	1		
285	9.1049.0012.5	1	51x42 G-6205	
286	9.1107.0006.4	2	6205 ZJV	
287	9.1052.0009*6	1	S42x52x2,5 DIN 988	
288	4.1201.0120.0	1		

# LELY

OPTIMO	type number type number numéro de type Typnummer	vanaf serienummer as from serial number après numéro de série ab Seriennummer
165	4.1201.0005.1	10203 - 0501
165	4.1201.0006.1	10402 - 0501
205	4.1202.0004.1	10109 - 0501
205	4.1202.0005.1	10402 - 0501



E003-08-00

REF.	ONDERDEELNR. PART NUMBER REFERENCE TEILNUMMER	AANTAL QUANTITY QUANTITE ANZAHL		
------	--	--	--	--

165 205

251	9.1030.0018*2	8 10	M10 DIN 985-10	
252	9.1113.0341*4	10 12	M8x20 DIN 933-10.9	
253	9.1051.0001.6	8 10	A8,2 DIN 6798	[////]
254	9.1051.0002.0	10 12	A10,5 DIN 6798	[////]
255	4.1201.1468.0	8 10		
256	9.1031.0013.3	(4) (5)	(= REF. 221)	M18x1,5
257	9.1072.0017.1	4 5	3x30 DIN 94	
258	4.1201.1467.0	(4) (5)	(= REF. 222)	
259	4.1201.1469.0	4 5		
260	9.1043.0054.4	8 10	OR 16x4	
261	4.1201.0142.0	8 10		
262	4.1201.1474.0	4 6	[RD]	L= 120 mm
	4.1201.1473.0	4 4	[LD][x]	L= 120 mm
263	4.1201.0141*0	8 10		
264	4.1201.0145.0	7 9		
265	4.1201.0143.0	4 4	L= 250 mm	
	4.1202.0148.0	- 1	L= 285 mm	
267	9.1030.0040*3	2 2	M8 DIN 985-10	
268	4.1201.0391.0	1 1		
271	4.1201.2410.0	(3) (4)		

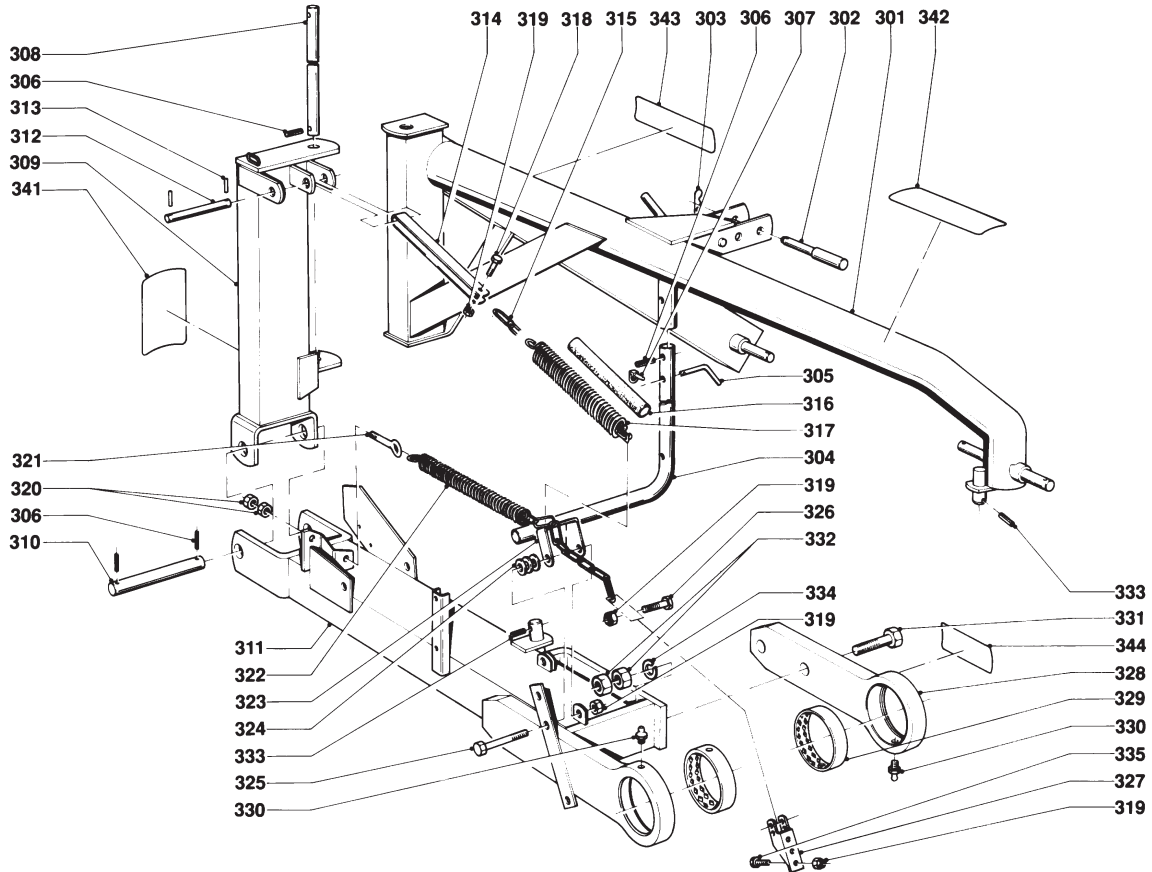
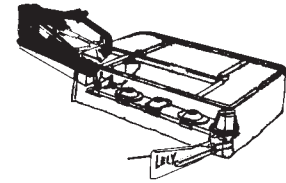
REF.	ONDERDEELNR. PART NUMBER REFERENCE TEILNUMMER	AANTAL QUANTITY QUANTITE ANZAHL		
------	--	--	--	--

275	4.1201.0329.0	1		
276	9.1120.0028.6	1	18x1,00 DIN 472	
277	4.1201.0341.0	1		
278	4.1201.0135.0	1		
279	9.1113.0027*5	2	M10x20 DIN 933-8.8	
280	9.1029.0024*2	1	M30x1,5 DIN 934-8	
281	9.1052.0011.1	1	S30x42x2,5 DIN 988	
282	4.1201.0149.0	1	□ 165	
	4.1202.0149.0	1	□ 205	
283	4.1201.0401.0	1	○ 165	
	4.1202.0401.0	1	○ 205	
284	4.1201.0146.0	1		
285	9.1049.0012.5	1	51x42 G-6205	
286	9.1107.0006.4	2	6205 ZJV	
287	9.1052.0009*6	1	S42x52x2,5 DIN 988	
288	4.1201.0120.0	1		



LELY

OPTIMO	type number type number numéro de type Typnummer	vanaf serienummer as from serial number après numéro de série ab Seriennummer
165	4.1201.0000.1	960 - 0501
205	4.1202.0000.1	960 - 0501



E004-05-00

REF.	ONDERDEELNR. PART NUMBER REFERENCE TEILNUMMER	AANTAL QUANTITY QUANTITE ANZAHL
------	--	--

301	4.1201.0150.0	1
302	9.1088.0010*6	1
303	9.1124.0008*3	1
304	4.1201.1498.0	1
305	4.1003.0018.0	1
306	9.1070.0023.2	5
307	9.1123.0003*6	1
308	4.1201.1493.0	1
309	4.1201.0260.0	1
310	4.1201.1492.0	1
311	4.1201.0561.0	1
312	4.1003.0048.0	1
313	9.1070.0018.4	2
314	4.1201.1494.0	1
315	9.1144.0026*1	1
316	4.1201.1484.0	1
317	4.1201.1483.0	1
318	9.1113.0033*4	1
319	9.1030.0004*2	4
320	9.1029.0008*0	2
321	9.1114.0003.1	1
322	4.1201.1481.0	1
323	4.1201.0550.0	1
324	9.1048.0007*1	3
325	9.1113.0043*0	1

REF.	ONDERDEELNR. PART NUMBER REFERENCE TEILNUMMER	AANTAL QUANTITY QUANTITE ANZAHL
------	--	--

326	9.1113.0035*6	1
327	4.1201.1464.0	1
328	4.1201.1487.0	1
329	4.1201.1482.0	2
330	9.1068.0007*2	2
331	9.1113.0094*2	2
332	9.1029.0016*1	4
333	9.1070.0028.0	2
334	9.1121.0014*5	2
335	9.1113.0120*0	2
341	9.1170.0190.6	1
342	9.1170.0125.4	1
343	9.1170.0091.5	1
344	9.1170.0205.0	2

M10x50 DIN 931-8.8

Ø19,4-Ø25,7 L= 166 mm

Ø4

Ø8x50 DIN 1481

Ø6

M10x45 DIN 931-8.8

M10 DIN 985-8

M12 DIN 934-8

AM 8x1,25

M20x90 DIN 931-8.8

M20 DIN 934-8

Ø10x60 DIN 1481

A20 DIN 127

M10x30 DIN 933-8.8

"Maaihoogte 20" 50 cm"

"Mowing height 20" 50 cm"

"Hautr. de fauchage 50 cm"

"Mähhöhe 20" 50 cm"

"MAX. 540/min"

"ATTENTIE; PTO INSCHAKELLEN

BIJ STATIONAIR TOERENTAL"

"Smeerpunt"

"Greasing point"

"Point de graissage"

"Schmierstelle"

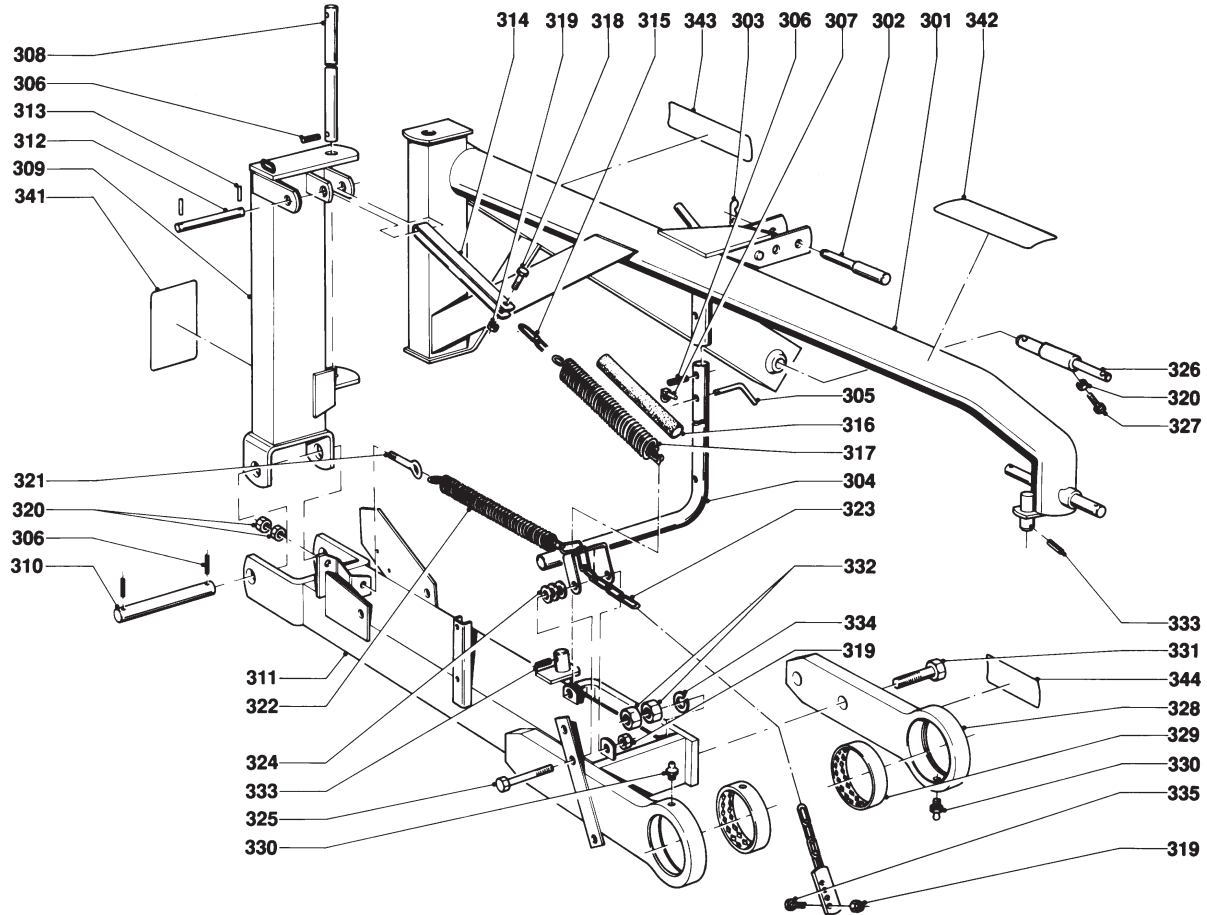
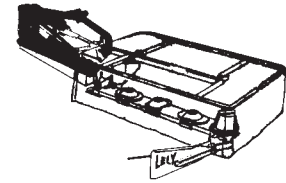
A10,5 DIN 125 [—]

M10x110 DIN 931-8.8

[—]

# LELY

OPTIMO	type number type number numéro de type Typnummer	vanaf serienummer as from serial number après numéro de serie ab Serienummer
165	4.1201.0000.1	987 - 0651
165	4.1201.0002.1	997 - 0501
205	4.1202.0000.1	989 - 0651
205	4.1202.0001.1	997 - 0501



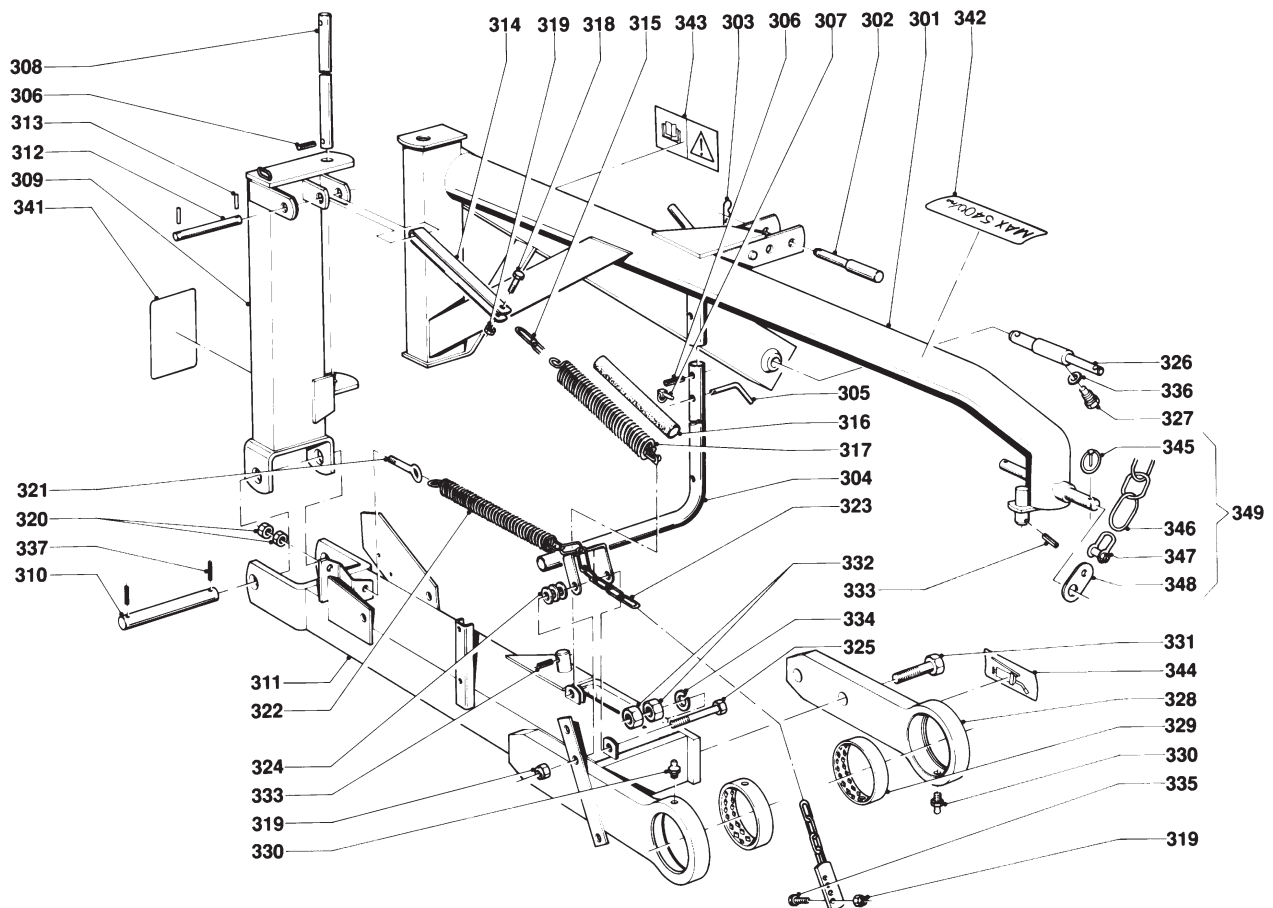
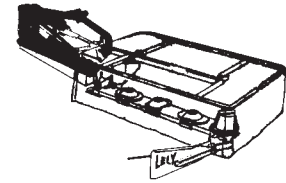
E004-06-00

REF.	ONDERDEELNR. PART NUMBER REFERENCE TEILNUMMER	AANTAL QUANTITY QUANTITE ANZAHL	
301	4.1201.0151.0	1	
302	9.1088.0010*6	1	Ø19,4-Ø25,7 L= 166 mm
303	9.1124.0008*3	1	Ø4
304	4.1201.1498.0	1	
305	4.1003.0018.0	1	
306	9.1070.0023.2	5	Ø8x50 DIN 1481
307	9.1123.0003*6	1	Ø6
308	4.1201.1493.0	1	
309	4.1201.0260.0	1	
310	4.1201.1492.0	1	
311	4.1201.0561.0	1	
312	4.1003.0048.0	1	
313	9.1070.0018.4	2	Ø6x40 DIN 1481
314	4.1201.1494.0	1	
315	9.1144.0026*1	1	15x(6x42)
316	4.1201.1484.0	1	
317	4.1201.1483.0	1	
318	9.1113.0033*4	1	M10x45 DIN 931-8.8
319	9.1030.0004*2	4	M10 DIN 985-8
320	9.1029.0008*0	3	M12 DIN 934-8
321	1.1633.1495.0	1	
322	4.1201.1481.0	1	
323	4.1201.0551.0	1	
324	9.1048.0007*1	3	A10,5 DIN 125 [—]
325	9.1113.0043*0	1	M10x110 DIN 931-8.8

REF.	ONDERDEELNR. PART NUMBER REFERENCE TEILNUMMER	AANTAL QUANTITY QUANTITE ANZAHL	
326	4.1201.0164.0	1	
327	9.1113.0118*5	1	M12x40 DIN 933-8.8
328	4.1201.1487.0	1	
329	4.1201.1482.0	2	
330	9.1068.0007*2	2	AM 8x1,25
331	9.1113.0094*2	2	M20x90 DIN 931-8.8
332	9.1029.0016*1	4	M20 DIN 934-8
333	9.1070.0028.0	2	Ø10x60 DIN 1481
334	9.1121.0014*5	2	A20 DIN 127 [—]
335	9.1113.0120*0	2	M10x30 DIN 933-8.8
341	9.1170.0190.6	1	"Maaihoogte 20" 50 cm" "Mowing height 20" 50 cm" "Hautr. de fauchage 50 cm" "Mähhöhe 20" 50 cm"
342	9.1170.0125.4	1	"MAX. 540/min"
343	9.1170.0091.5	1	"ATTENTIE; PTO INSCHAKELLEN BIJ STATIONAIR TOERENTAL"
344	9.1170.0205.0	2	"Smeerpunt" "Greasing point" "Point de graissage" "Schmierstelle"

LELY

OPTIMO	type number type number numéro de type Typnummer	vanaf serienummer as from serial number après numéro de série ab Seriennummer
165	4.1201.0004.1	1010 - 0501
	4.1201.0005.1	10203 - 0501
	4.1201.0006.1	10402 - 0501
205	4.1202.0003.1	1010 - 0501
	4.1202.0004.1	10109 - 0501
	4.1202.0005.1	10402 - 0501



E004-07-00

REF.	ONDERDEELNR. PART NUMBER REFERENCE TEILNUMMER	AANTAL QUANTITY QUANTITE ANZAHL
------	--	--

301	4.1201.0152.0	1
302	9.1088.0010*6	1
303	9.1124.0008*3	1
304	4.1201.1498.0	1
305	4.1003.0018.0	1

306	9.1070.0023.2	3
307	9.1123.0003*6	1
308	4.1201.1493.0	1
309	4.1201.0260.0	1
310	4.1201.1492.0	1

311	4.1201.0561.0	1
312	4.1003.0048.0	1
313	9.1070.0018.4	2
314	4.1201.1494.0	1
315	9.1144.0026*1	1

316	4.1201.1484.0	1
317	4.1201.1483.0	1
318	9.1113.0033*4	1
319	9.1030.0004*2	4
320	9.1029.0008*0	2

321	1.1633.1495.0	1
322	4.1201.1481.0	1
323	4.1201.0551.0	1
324	9.1048.0007*1	3
325	9.1113.0043*0	1

326	4.1201.0161.0	1
327	4.1208.0347.0	1

REF.	ONDERDEELNR. PART NUMBER REFERENCE TEILNUMMER	AANTAL QUANTITY QUANTITE ANZAHL
------	--	--

328	4.1201.1487.0	1
329	4.1201.1482.0	2
330	9.1068.0007*2	2
331	9.1113.0094*2	2
332	9.1029.0016*1	4

333	9.1070.0028.0	2
334	9.1121.0014.5	2
335	9.1113.0120*0	2
336	9.1051.0004.2	1
337	9.1070.0039.4	2

341	9.1170.0190.6	1
	"Maaihoogte 20" 50 cm"	
	"Mowing height 20" 50 cm"	
	"Hautr. de fauchage 50 cm"	
	"Mähhöhe 20" 50 cm"	

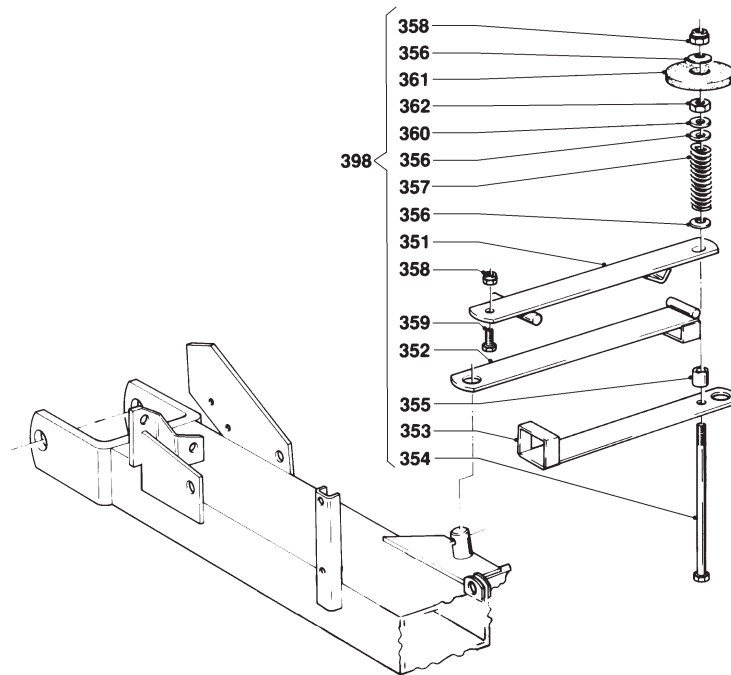
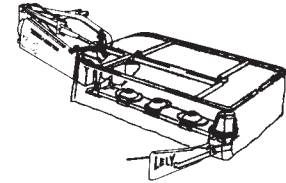
342	9.1170.0125.4	1
343	9.1170.0408.0	1
344	9.1170.0205.0	2

345	9.1123.0002*5	(1)
346	9.1144.0018*0	(1)
347	9.1146.0005*6	(2)
348	4.1201.2078.0	(1)

349	4.1201.2071.0	(1)
	= REF. 345-348	

LELY

OPTIMO	type number type number numéro de type Typnummer	vanaf serienummer as from serial number après numéro de serie ab Seriennummer
165	4.1201.0000.1	960 - 0501
205	4.1202.0000.1	960 - 0501



E031-03-10

REF.	ONDERDEELNR. PART NUMBER REFERENCE TEILNUMMER	AANTAL QUANTITY QUANTITE ANZAHL	
------	--	--	--

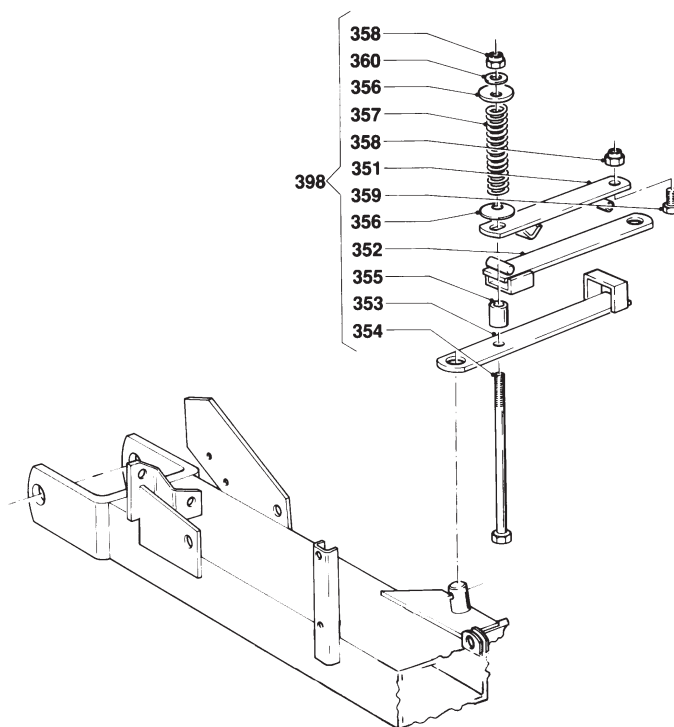
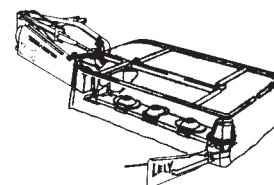
351	4.1201.0220.0	1	
352	4.1201.0230.0	1	
353	4.1201.0240.0	1	
354	9.1113.0161*6	1	M14x260 DIN 931-8.8
355	4.1201.0259.0	1	
356	9.1091.0008*1	3	40x14,3x1,5 DIN 2093
357	9.1090.0011.5	1	165
	4.1203.0219.0	1	205
358	9.1030.0015*6	2	M14 DIN 985-8
359	9.1113.0119*6	1	M14x30 DIN 933-8.8
360	9.1048.0053*5	2	A15 DIN 125 [ ]
361	4.1201.0219.0	1	
362	9.1029.0012*4	1	M14 DIN 934-8

REF.	ONDERDEELNR. PART NUMBER REFERENCE TEILNUMMER	AANTAL QUANTITY QUANTITE ANZAHL		
------	--	--	--	--

398	4.1201.0210.0	1	= REF. 351-362	165
398	4.1203.0210.0	1	= REF. 351-362	205

LELY

OPTIMO	type number type number numéro de type Typnummer	vanaf serienummer as from serial number après numéro de serie ab Seriennummer
165	4.1201.0000.1	984 - 0601
	4.1201.0002.1	997 - 0501
	4.1201.0004.1	1010 - 0501
205	4.1202.0000.1	981 - 0551
	4.1202.0001.1	997 - 0501
	4.1202.0003.1	1010 - 0501
	4.1202.0004.1	10109 - 0501



E031-04-10

REF.	ONDERDEELNR. PART NUMBER REFERENCE TEILNUMMER	AANTAL QUANTITY QUANTITE ANZAHL
------	--	--

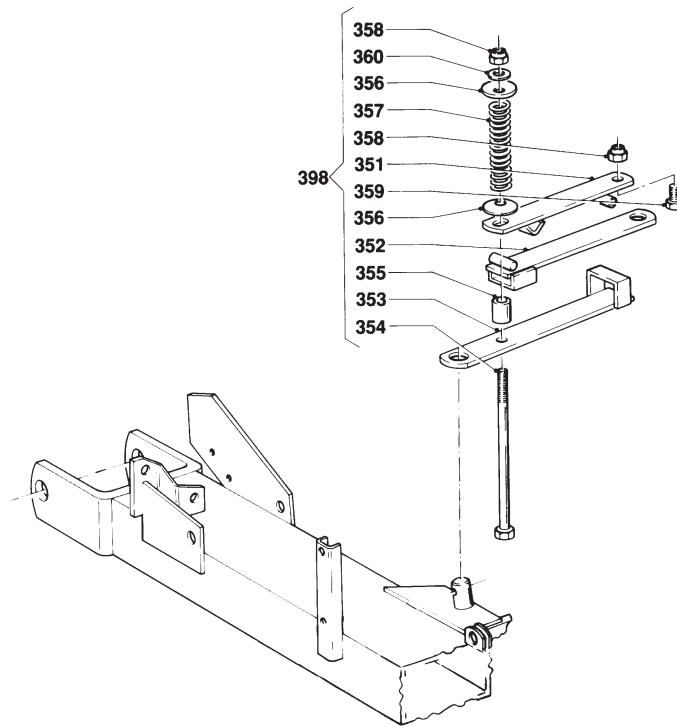
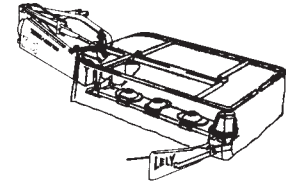
351	4.1201.0221.0	1	
352	4.1201.0231.0	1	
353	4.1201.0241.0	1	
354	9.1113.0161*6	1	M14x260 DIN 931-8.8
355	4.1201.0259.0	1	
356	9.1091.0008*1	2	40x14,3x1,5 DIN 2093
357	9.1090.0011.5	1	165
	4.1203.0219.0	1	205
358	9.1030.0015*6	2	M14 DIN 985-8
359	9.1113.0119*6	1	M14x30 DIN 933-8.8
360	9.1048.0053*5	1	A15 DIN 125 [ ]

REF.	ONDERDEELNR. PART NUMBER REFERENCE TEILNUMMER	AANTAL QUANTITY QUANTITE ANZAHL
------	--	--

398	4.1201.0210.0	1	= REF. 351-360	165
398	4.1203.0210.0	1	= REF. 351-360	205

LELY

OPTIMO	type number type number numéro de type Typnummer	vanaf serienummer as from serial number après numéro de serie ab Seriennummer
165	4.1201.0005.1	10203 - 0501
205	4.1202.0004.1	10203 - 0628



E031-04-10

REF.	ONDERDEELNR. PART NUMBER REFERENCE TEILNUMMER	AANTAL QUANTITY QUANTITE ANZAHL
------	--	--

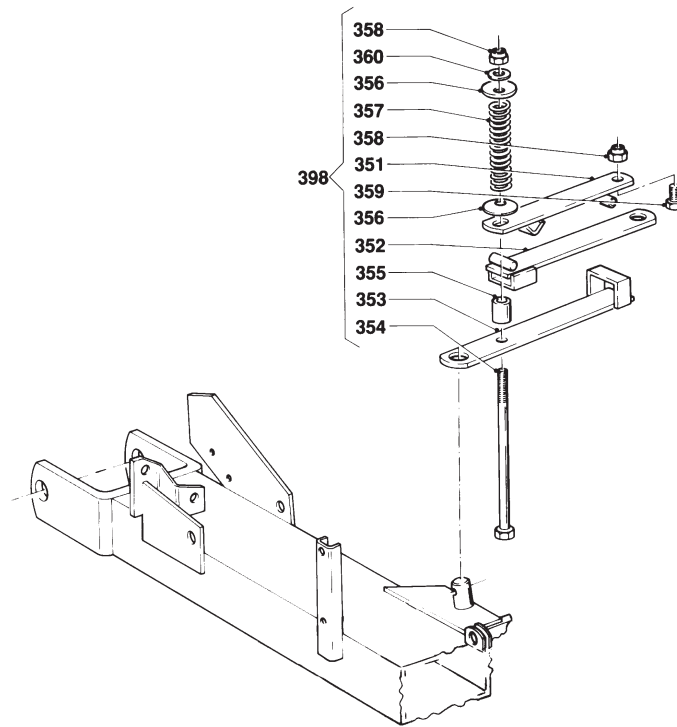
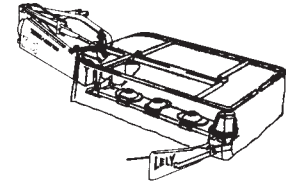
351	4.1219.0111.0	1	
352	4.1219.0121.0	1	
353	4.1219.0130.0	1	
354	9.1113.0161*6	1	M14x260 DIN 931-8.8
355	4.1219.0098.0	1	
356	9.1091.0008*1	2	40x14,3x1,5 DIN 2093
357	9.1090.0011.5	1	165
	4.1203.0219.0	1	205
358	9.1030.0015*6	2	M14 DIN 985-8
359	9.1113.0178*2	1	M14x35 DIN 933-10.9
360	9.1048.0053*5	1	A15 DIN 125 [ ]

REF.	ONDERDEELNR. PART NUMBER REFERENCE TEILNUMMER	AANTAL QUANTITY QUANTITE ANZAHL
------	--	--

398	4.1201.0211.0	1	= REF. 351-360	165
398	4.1229.0190.0	1	= REF. 351-360	205

LELY

OPTIMO	type number type number numéro de type Typnummer	vanaf serienummer as from serial number après numéro de serie ab Seriennummer
165	4.1201.0005.1	10402 - 0656
165	4.1201.0006.1	10402 - 0501
205	4.1202.0004.1	10404 - 0873
205	4.1202.0005.1	10402 - 0501



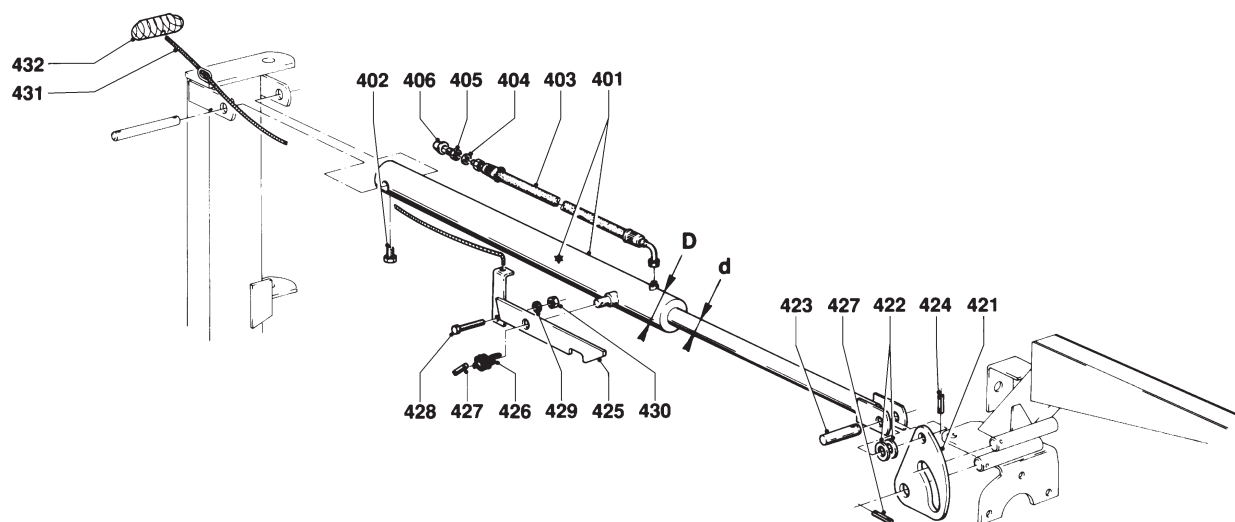
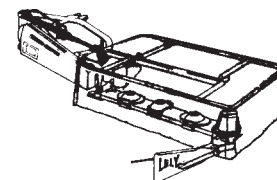
E031-04-10

REF.	ONDERDEELNR. PART NUMBER REFERENCE TEILNUMMER	AANTAL QUANTITY QUANTITE ANZAHL	
351	4.1219.0111.0	1	
352	4.1219.0122.0	1	
353	4.1219.0131.0	1	
354	9.1113.0161*6	1	M14x260 DIN 931-8.8
355	4.1220.0809.0	1	
356	9.1091.0008*1	2	40x14,3x1,5 DIN 2093
357	9.1090.0011.5	1	165
	4.1203.0219.0	1	205
358	9.1030.0015*6	2	M14 DIN 985-8
359	9.1113.0178*2	1	M14x35 DIN 933-10.9
360	9.1048.0053*5	1	A15 DIN 125 [ ]

REF.	ONDERDEELNR. PART NUMBER REFERENCE TEILNUMMER	AANTAL QUANTITY QUANTITE ANZAHL		
398	4.1201.0212.0	1	= REF. 351-360	165
398	4.1229.0191.0	1	= REF. 351-360	205

# LELY

OPTIMO	type number type number numéro de type Typnummer	vanaf serienummer as from serial number après numéro de série ab Seriennummer
165	4.1201.0000.1	949 - 0526
205	4.1202.0000.1	949 - 0501



E005-03-10

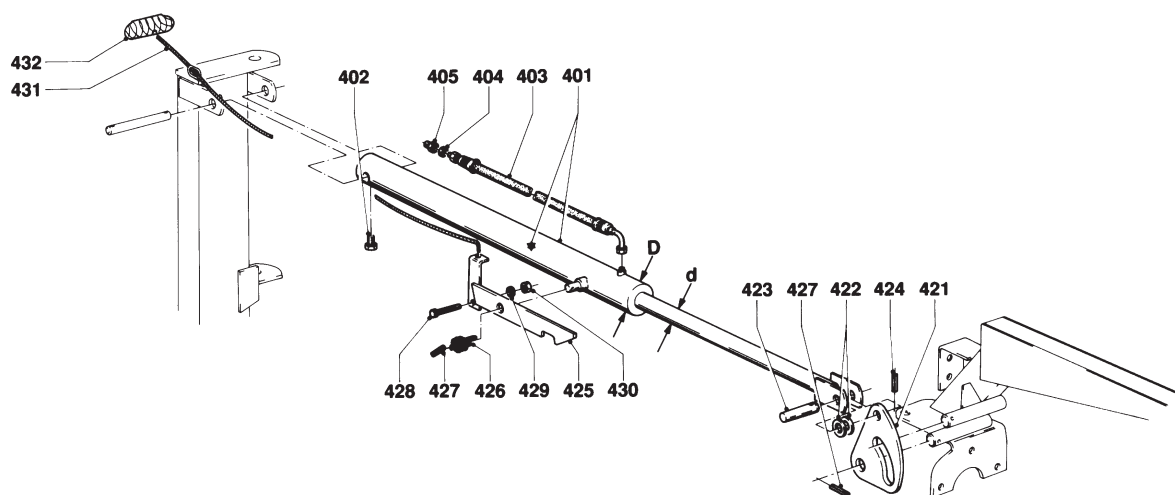
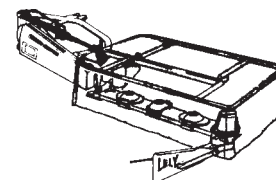
REF.	ONDERDEELNR. PART NUMBER REFERENCE TEILNUMMER	AANTAL QUANTITY QUANTITE ANZAHL	
401	4.1201.0190.0	1	(401= 401+ ★ +402)
★	4.1201.0194.0	(1)	(d= Ø30, D= Ø50/60) [A+A][x]
402	9.1150.0004.1	(1)	M14x1,5
403	4.1016.0530.0	1	L= 2060 mm
404	9.1137.0401.5	-	Ø14x20x1,5
405	9.1137.0606.0	-	3/8"-1/4"
	9.1137.0604.5	-	M18x1,5-1/4"
	9.1137.0603.4	-	1/2"-1/4"
	9.1137.0608.2	-	M22x1,5-1/4"
406	9.1108.0030.6	-	3/8"
	9.1108.0032.1	-	M18
	9.1108.0023.6	-	1/2"
	9.1108.0035.5	-	M22

REF.	ONDERDEELNR. PART NUMBER REFERENCE TEILNUMMER	AANTAL QUANTITY QUANTITE ANZAHL	
421	4.1201.0136.0	1	
422	9.1048.0019*6	4	A21 DIN 125 [—]
423	4.1201.1495.0	1	
424	9.1070.0019.5	1	Ø6x50 DIN 1481
425	4.1201.0590.0	1	
426	4.1002.0064.0	1	
427	9.1070.0023.2	3	Ø8x50 DIN 1481
428	9.1113.0132*5	1	M10x50 DIN 933-8.8
429	9.1051.0002*0	1	A10,5 DIN 6798 [////]
430	9.1029.0005*4	1	M10 DIN 934-8
431	4.1201.1462.0	1	Ø6x4m (1m= 9.1163.0004.2)
432	2.3201.0328.0	1	



# LELY

OPTIMO	type number type number numéro de type Typnummer	vanaf serienummer as from serial number après numéro de serie ab Seriennummer
165	4.1201.0000.1	987 - 0651
165	4.1201.0002.1	997 - 0501
205	4.1202.0000.1	989 - 0651
205	4.1202.0001.1	997 - 0501



E005-05-10

REF.	ONDERDEELNR. PART NUMBER REFERENCE TEILNUMMER	AANTAL QUANTITY QUANTITE ANZAHL	
------	--	--	--

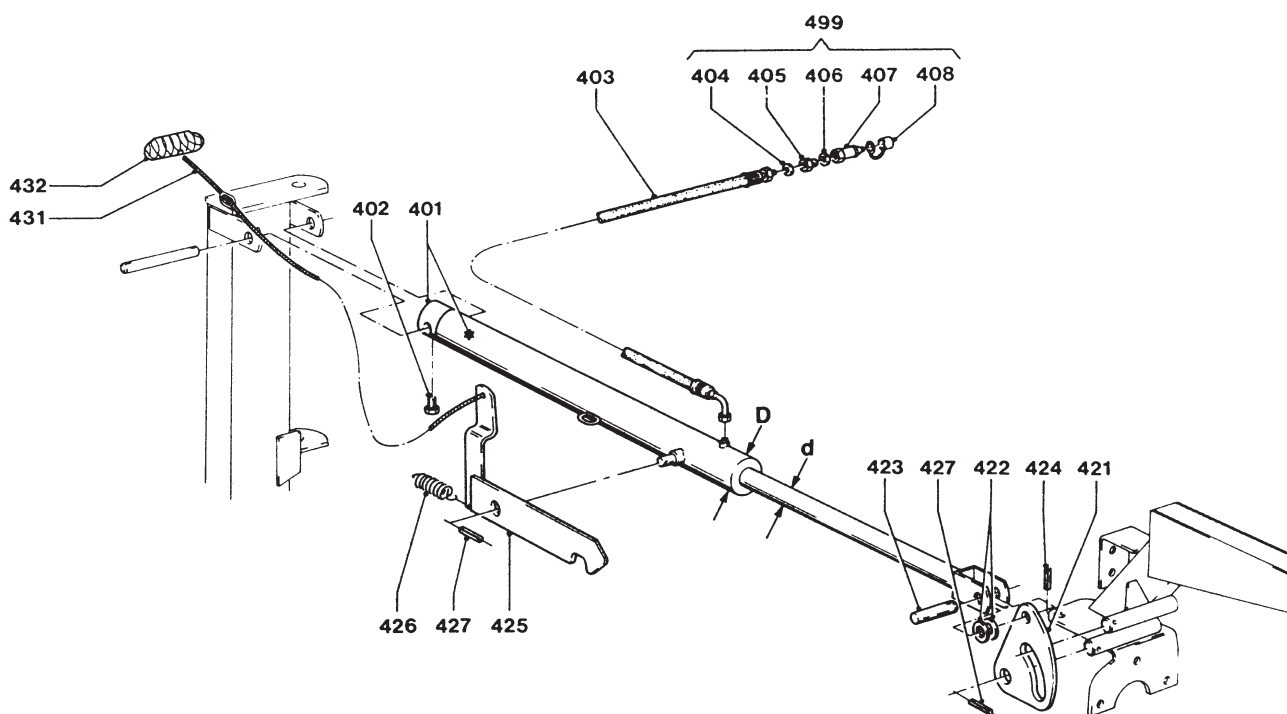
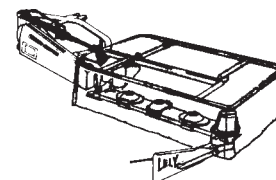
401	4.1201.0191.0	1	(401= 401+ ★ +402)
★	4.1201.0193.0	(1)	(d= Ø25, D= Ø50/60) [A+A][x]
402	9.1150.0004.1	(1)	M14x1,5
403	4.1016.0530.0	1	L= 2060 mm
404	9.1137.0401.5	-	Ø14x20x1,5 Cu [ ]
405	9.1137.0606.0	-	3/8"-1/4"
	9.1137.0604.5	-	M18x1,5-1/4"
	9.1137.0603.4	-	1/2"-1/4"
	9.1137.0608.2	-	M22x1,5-1/4"

REF.	ONDERDEELNR. PART NUMBER REFERENCE TEILNUMMER	AANTAL QUANTITY QUANTITE ANZAHL	
------	--	--	--

421	4.1201.0136.0	1	
422	9.1048.0019*6	4	A21 DIN 125 [ ]
423	4.1201.1495.0	1	
424	9.1070.0019.5	1	Ø6x50 DIN 1481
425	4.1201.0590.0	1	
426	4.1002.0064.0	1	
427	9.1070.0023.2	3	Ø8x50 DIN 1481
428	9.1113.0132*5	1	M10x50 DIN 933-8.8
429	9.1051.0002*0	1	A10,5 DIN 6798 [ ]
430	9.1029.0005*4	1	M10 DIN 934-8
431	4.1201.1462.0	1	Ø6x4m (1m= 9.1163.0004.2)
432	2.3201.0328.0	1	

# LELY

OPTIMO	type number type number numéro de type Typnummer	vanaf serienummer as from serial number après numéro de serie ab Seriennummer
165	4.1201.0002.1	1004 - 0709
	4.1201.0004.1	1010 - 0501
	4.1201.0005.1	10203 - 0501
205	4.1202.0001.1	1004 - 0825
	4.1202.0003.1	1010 - 0501
	4.1202.0004.1	10109 - 0501



E005-06-01

REF.	ONDERDEELNR. PART NUMBER REFERENCE TEILNUMMER	AANTAL QUANTITY QUANTITE ANZAHL	
------	--	--	--

401	4.1201.0192.0	1	(401= 401+ ★ +402)
★	4.1201.0193.0	(1)	(d= Ø25, D= Ø50/60) [A+A][x]

402	9.1150.0004.1	(1)	M14x1,5
403	4.1016.0530.0	1	L= 2060 mm
404	9.1137.0401.5	1	Ø14x20x1,5 Cu [—]
405	9.1137.0603.4	1	1/2"-1/4"
406	9.1137.0402.6	1	Ø22x29x1,5 Cu [—]
407	9.1137.0302.4	1	1/2" G
408	9.1137.0303.5	1	1/2" PVC

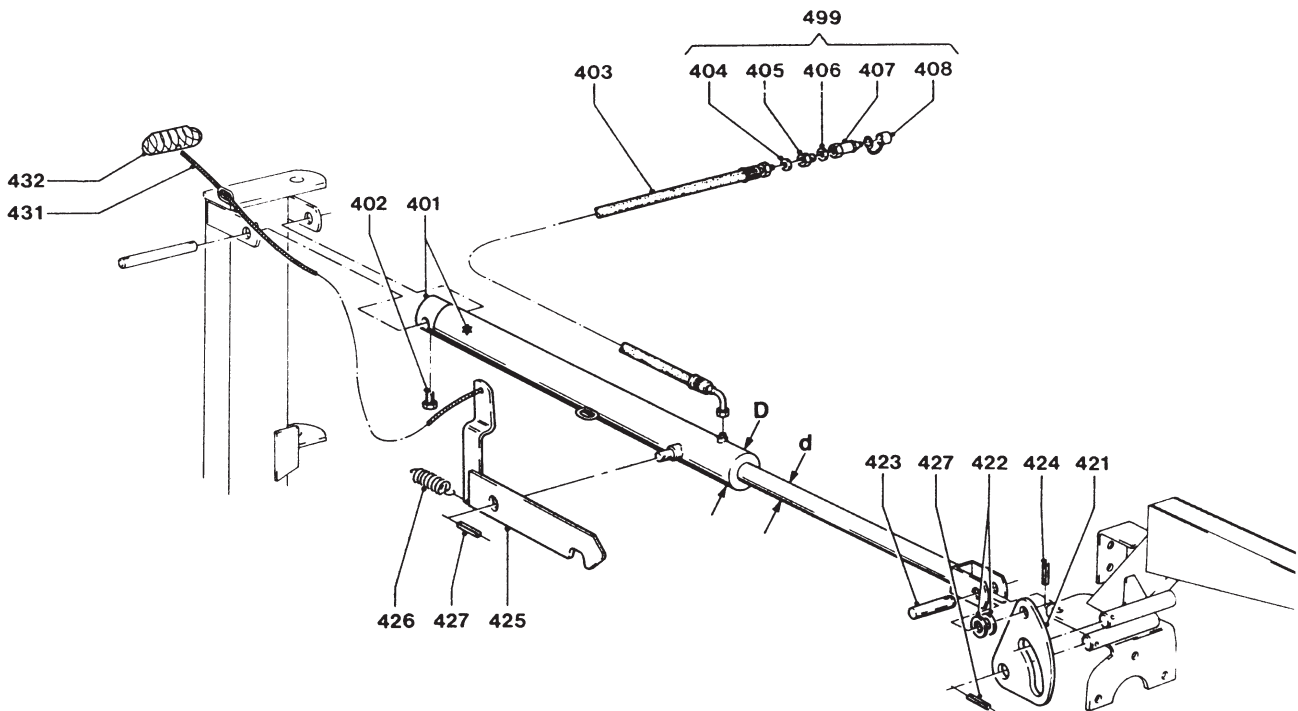
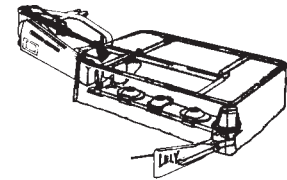
499	2.3201.2312.8	1	= REF. 404-408
-----	---------------	---	----------------

REF.	ONDERDEELNR. PART NUMBER REFERENCE TEILNUMMER	AANTAL QUANTITY QUANTITE ANZAHL	
------	--	--	--

421	4.1201.0136.0	1	
422	9.1048.0019*6	4	A21 DIN 125 [—]
423	4.1210.1495.0	1	
424	9.1070.0019.5	1	Ø6x50 DIN 1481
425	4.1210.0520.0	1	
426	9.1089.0014.2	1	
427	9.1070.0023.2	3	Ø8x50 DIN 1481
431	4.1201.1462.0	1	Ø6x4m (1m= 9.1163.0004.2)
432	2.3201.0328.0	1	

# LELY

OPTIMO	type number type number numéro de type Typnummer	vanaf serienummer as from serial number après numéro de serie ab Seriennummer
165	4.1201.0005.1	10402 - 0656
165	4.1201.0006.1	10402 - 0501
205	4.1202.0004.1	10404 - 0873
205	4.1202.0005.1	10402 - 0501



E005-06-01

REF.	ONDERDEELNR. PART NUMBER REFERENCE TEILNUMMER	AANTAL QUANTITY QUANTITE ANZAHL	
------	--	--	--

401	4.1201.0192.0	1	(401= 401+ ★ +402)
★	4.1201.0193.0	(1)	(d= Ø25, D= Ø50/60) [A+A][x]
402	9.1150.0004.1	(1)	M14x1,5
403	4.1016.0530.0	1	L= 2060 mm
404	9.1137.0409.6	1	Ø13,74x20,57x2,03 [—]
405	9.1137.0603.4	1	1/2"-1/4"
406	9.1137.0411.1	1	Ø21,54x28,58x2,34 [—]
407	9.1137.0302.4	1	1/2" G
408	9.1137.0303.5	1	1/2" PVC

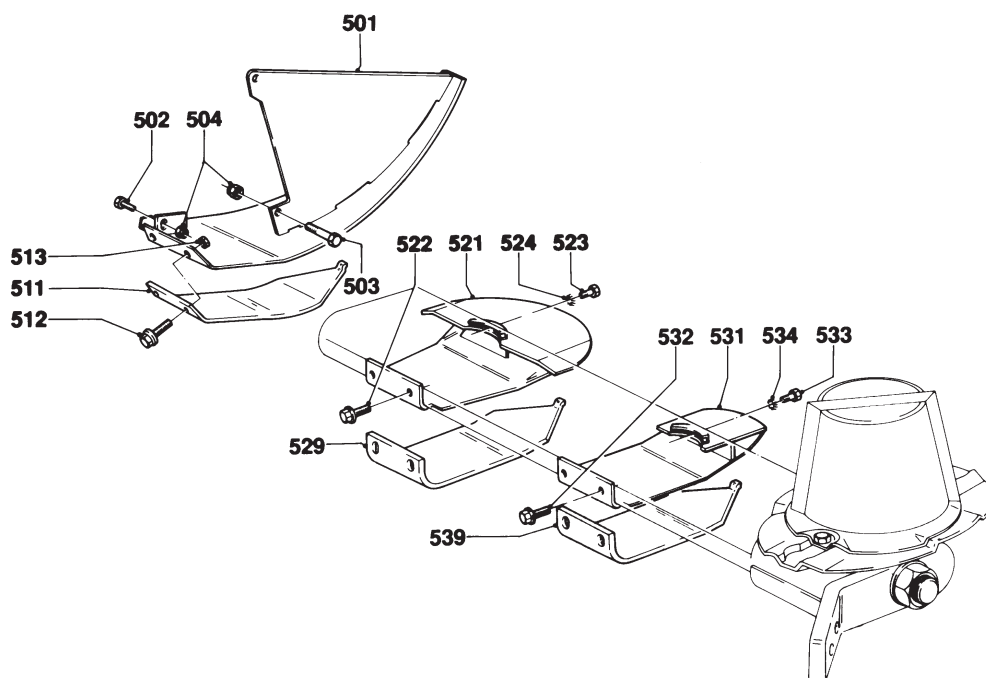
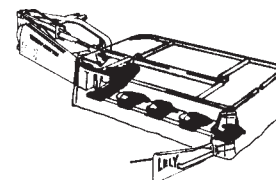
499 2.3201.2312.8 1 = REF. 404-408

REF.	ONDERDEELNR. PART NUMBER REFERENCE TEILNUMMER	AANTAL QUANTITY QUANTITE ANZAHL	
------	--	--	--

421	4.1201.0136.0	1	
422	9.1048.0019*6	4	A21 DIN 125 [—]
423	4.1210.1495.0	1	
424	9.1070.0019.5	1	Ø6x50 DIN 1481
425	4.1210.0520.0	1	
426	9.1089.0014.2	1	
427	9.1070.0023.2	3	Ø8x50 DIN 1481
431	4.1201.1462.0	1	Ø6x4m (1m= 9.1163.0004.2)
432	2.3201.0328.0	1	

LELY

OPTIMO	type number type number numéro de type Typnummer	vanaf serienummer as from serial number après numéro de serie ab Seriennummer
165	4.1201.0000.1	949 - 0526
165	4.1201.0002.1	997 - 0501
205	4.1202.0000.1	949 - 0501
205	4.1202.0001.1	997 - 0501



E006-07-10

REF.	ONDERDEELNR. PART NUMBER REFERENCE TEILNUMMER	AANTAL QUANTITY QUANTITE ANZAHL
------	--	--

501	4.1201.0361.0	1
502	9.1113.0117*4	1
503	9.1113.0041*5	1
504	9.1030.0004*2	2

511	4.1201.2003.0	(1)
	4.1201.2006.0	1

512	9.1114.0009*0	2
513	9.1030.0004*2	2

165/205

521	4.1201.0410.0	4/5
-----	---------------	-----

522	9.1114.0009*0	8/10
523	9.1113.0267*0	4/5
524	9.1051.0001*6	4/5

529	4.1201.2002.0	(4/5)
	4.1201.2005.0	4/5

REF.	ONDERDEELNR. PART NUMBER REFERENCE TEILNUMMER	AANTAL QUANTITY QUANTITE ANZAHL
------	--	--

165/205

531	4.1201.2200.0	4/5
-----	---------------	-----

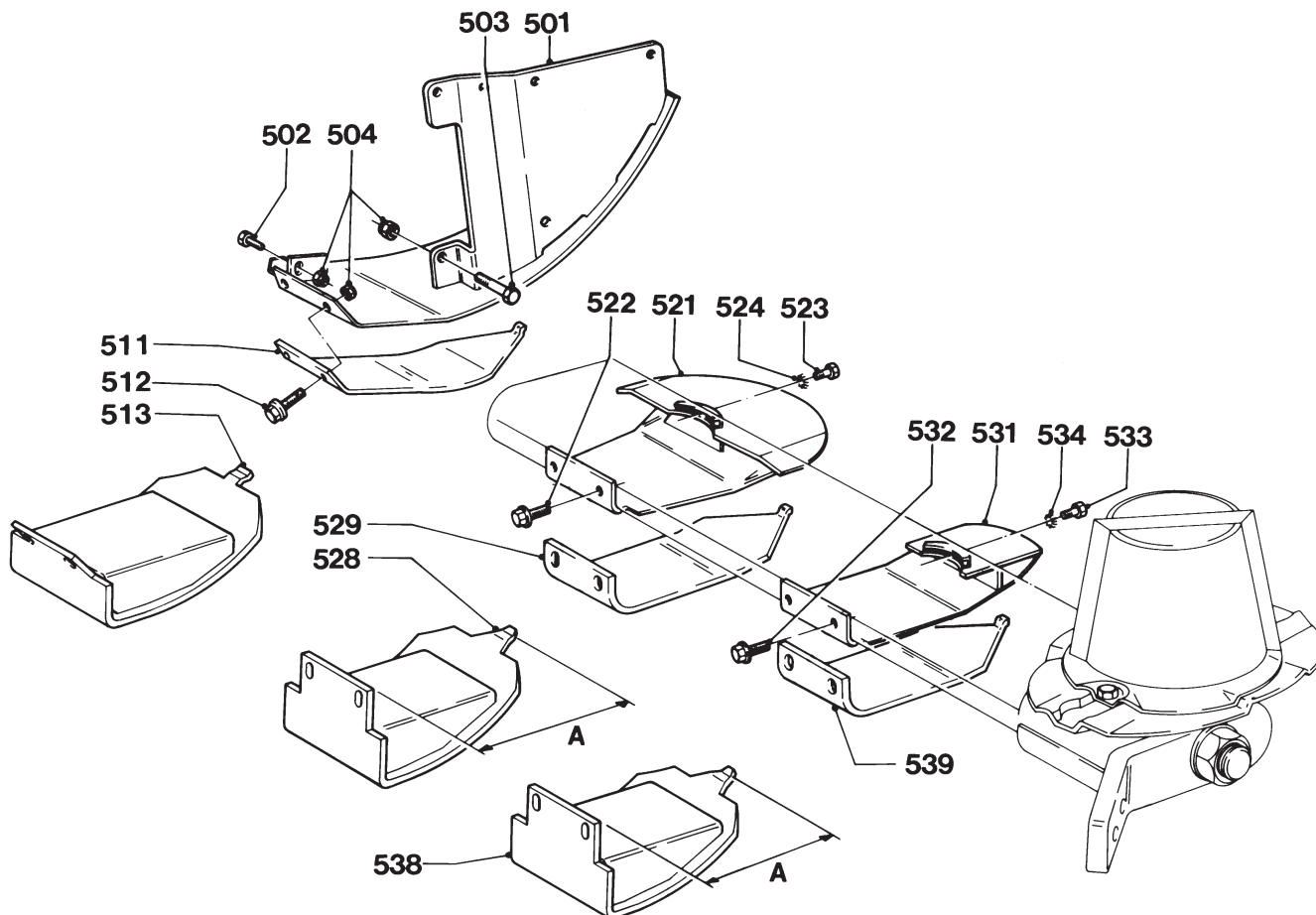
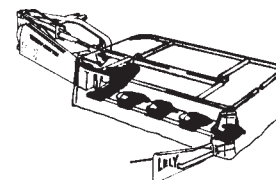
532	9.1114.0009*0	8/10
533	9.1113.0267*0	4/5
534	9.1051.0001*6	4/5

539	4.1201.2004.0	(4/5)
	4.1201.2007.0	4/5

Slijtplaten  
Wearplates  
Plaques d'usure  
Verschleissplatten

LELY

OPTIMO	type number type number numéro de type Typnummer	vanaf serienummer as from serial number après numéro de serie ab Seriennummer
165	4.1201.0004.1	1010 - 0501
	4.1201.0005.1	10203 - 0501
	4.1201.0006.1	10402 - 0501
205	4.1202.0003.1	1010 - 0501
	4.1202.0004.1	10109 - 0501
	4.1202.0005.1	10402 - 0501



E006-09-00

REF.	ONDERDEELNR. PART NUMBER REFERENCE TEILNUMMER	AANTAL QUANTITY QUANTITE ANZAHL
------	--	--

501	4.1201.0362.0	1
502	9.1113.0117*4	1
503	9.1113.0041*5	1
504	9.1030.0004*2	4
511	4.1201.2003.0	(1)
	4.1201.2006.0	1
512	9.1114.0009*0	2
513	4.1201.2480.0	(1)
		165 205
521	4.1201.0410.0	(4) (5)
522	9.1114.0009*0	(8) (10)
523	9.1113.0267*0	(4) (5)
524	9.1051.0001.6	(4) (5)
528	4.1201.2470.0	(2-4) (3-5)
529	4.1201.2002.0	(4) (5)
	4.1201.2005.0	(4) (5)

REF.	ONDERDEELNR. PART NUMBER REFERENCE TEILNUMMER	AANTAL QUANTITY QUANTITE ANZAHL
------	--	--

		165 205
531	4.1201.2200.0	(4) (5)
532	9.1114.0009*0	(8) (10)
533	9.1113.0267*0	(4) (5)
534	9.1051.0001.6	(4) (5)
538	4.1201.2461.0	(2-4) (3-5)
539	4.1201.2004.0	(4) (5)
	4.1201.2007.0	(4) (5)

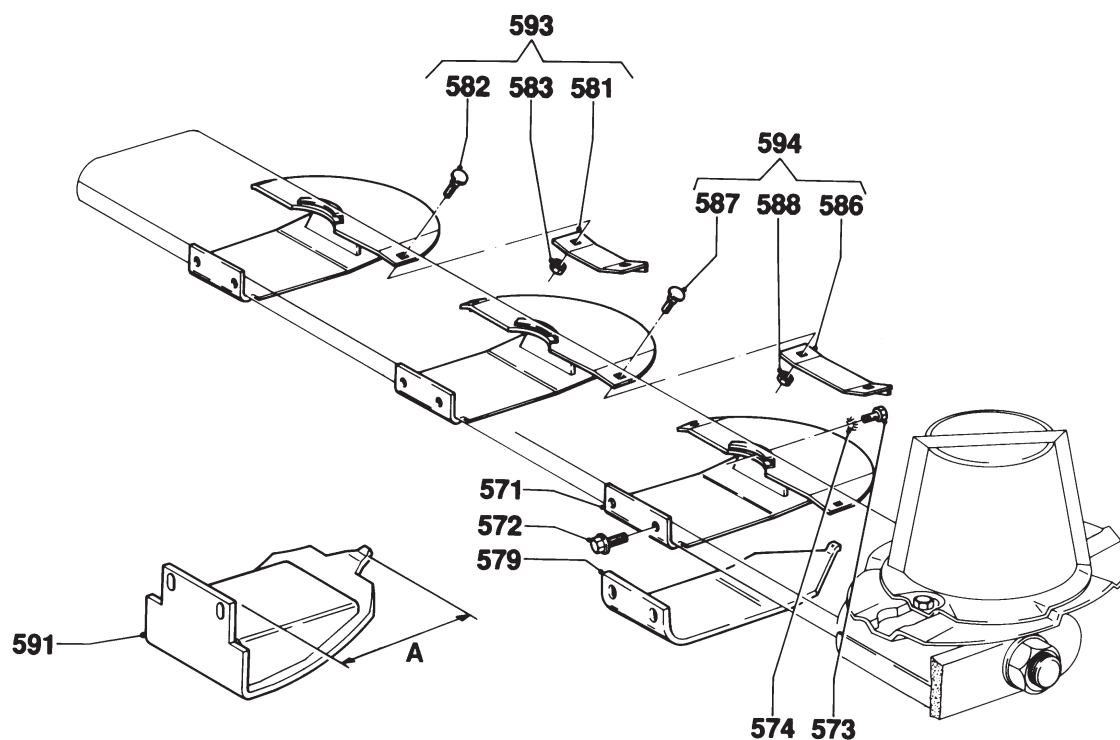
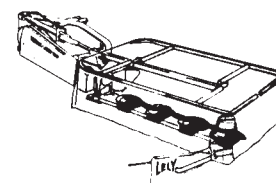
[//////]

A= 252 mm

Slijtplaten  
Wearplates  
Plaques d'usure  
Verschleissplatten

LELY

OPTIMO	type nummer type number numéro de type Typnummer	vanaf serienummer as from serial number après numéro de serie ab Seriennummer
165	4.1201.0000.1	949 - 0526
	4.1201.0002.1	997 - 0501
	4.1201.0004.1	1010 - 0501
205	4.1202.0000.1	949 - 0501
	4.1202.0001.1	997 - 0501
	4.1202.0003.1	1010 - 0501



E048-03-10

REF.	ONDERDEELNR. PART NUMBER REFERENCE TEILNUMMER	AANTAL QUANTITY QUANTITE ANZAHL
------	--	--

GLIJSLOFFEN (voorbereid voor maaibalk-steenbescherming) = 571  
 SKIDS (prepared for cutter bar stone protection) = 571  
 PATINS (préparés pour kit de protection anti-pierres) = 571  
 GLEITKUFEN (für Mähbalken-Steinschutzsatz vorbereitet) = 571

165 205

571	4.1201.0420.0	(4) (5)	
572	9.1114.0009*0	(8) (10)	M10x30 8.8
573	9.1113.0267*0	(4) (5)	M8x16 DIN 933-10.9
574	9.1051.0001*6	(4) (5)	A8,2 DIN 6798 [//////]
579	4.1201.2004.0	(4) (5)	3 mm Slijtplaten
	4.1201.2007.0	(4) (5)	6 mm Wearplates
			Plaques d'usure
			Verschleissplatten

581	4.1201.0430.0	(1x ..)	[←125→]
582	9.1058.0027*4	(2x ..)	M10x25 DIN 603
583	9.1030.0004*2	(2x ..)	M10 DIN 985-8

586	4.1202.2030.0	- (1)	[←160→]
587	9.1058.0027*4	- (2)	M10x25 DIN 603
588	9.1030.0004*2	- (2)	M10 DIN 985-8

REF.	ONDERDEELNR. PART NUMBER REFERENCE TEILNUMMER	AANTAL QUANTITY QUANTITE ANZAHL
------	--	--

165 205

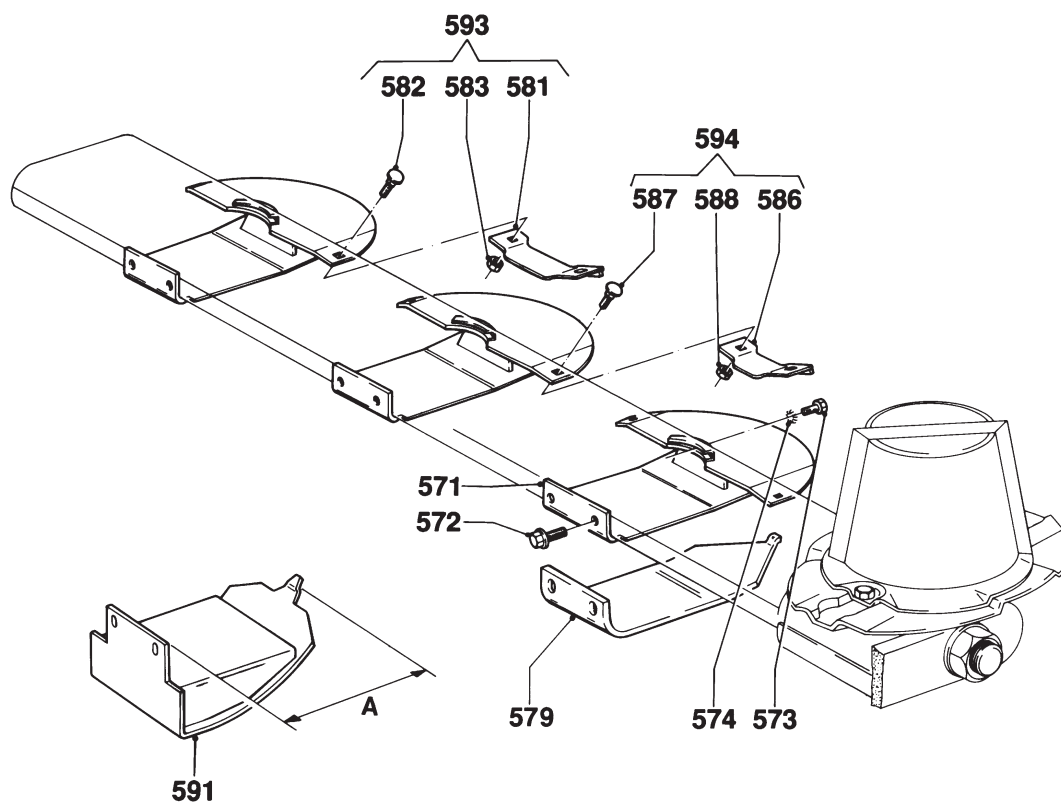
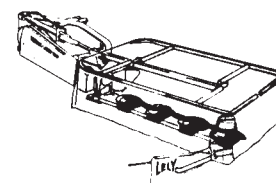
591	4.1201.2461.0	(2-4) (3-5)	A= 252 mm
			Onder glijslof 531/571
			Underneath skid 531/571
			Au-dessous du patin
531/571			Unter Gleitkufen 531/571

593	4.1201.0450.0	(3) (3)	= REF. 581-583 [←125→]
-----	---------------	---------	------------------------

594	4.1202.2040.0	- (1)	= REF. 586-588 [←160→]
-----	---------------	-------	------------------------

# LELY

OPTIMO	type number type number numéro de type Typnummer	vanaf serienummer as from serial number après numéro de série ab Seriennummer
165	4.1201.0005.1	10203 - 0501
165	4.1201.0006.1	10402 - 0501
205	4.1202.0004.1	10109 - 0501
205	4.1202.0005.1	10402 - 0501



E048-04-01

REF.	ONDERDEELNR. PART NUMBER REFERENCE TEILNUMMER	AANTAL QUANTITY QUANTITE ANZAHL
------	--	--

GLIJSLOFFEN (voorbereid voor maaibalk-steenbescherming) = 571  
 SKIDS (prepared for cutter bar stone protection) = 571  
 PATINS (préparés pour kit de protection anti-pierres) = 571  
 GLEITKUFEN (für Mähbalken-Steinschutzsatz vorbereitet) = 571

165 205

571	4.1201.0420.0	4	5	
572	9.1114.0009*0	8	10	M10x30 8.8
573	9.1113.0267*0	4	5	M8x16 DIN 933-10.9
574	9.1051.0001.6	4	5	A8,2 DIN 6798 [//////]
579	4.1201.2004.0	4	5	3 mm Slijtplaten
	4.1201.2007.0	(4)	(5)	6 mm Wearplates
				Plaques d'usure
				Verschleissplatten
581	4.1229.0250.0	-	(1)	[←-160→]
582	9.1058.0027*4	-	(2)	M10x25 DIN 603
583	9.1030.0004*2	-	(2)	M10 DIN 985-8
586	4.1225.0550.0	(1x ..)		[←-125→]
587	9.1058.0027*4	(2x ..)		M10x25 DIN 603
588	9.1030.0004*2	(2x ..)		M10 DIN 985-8

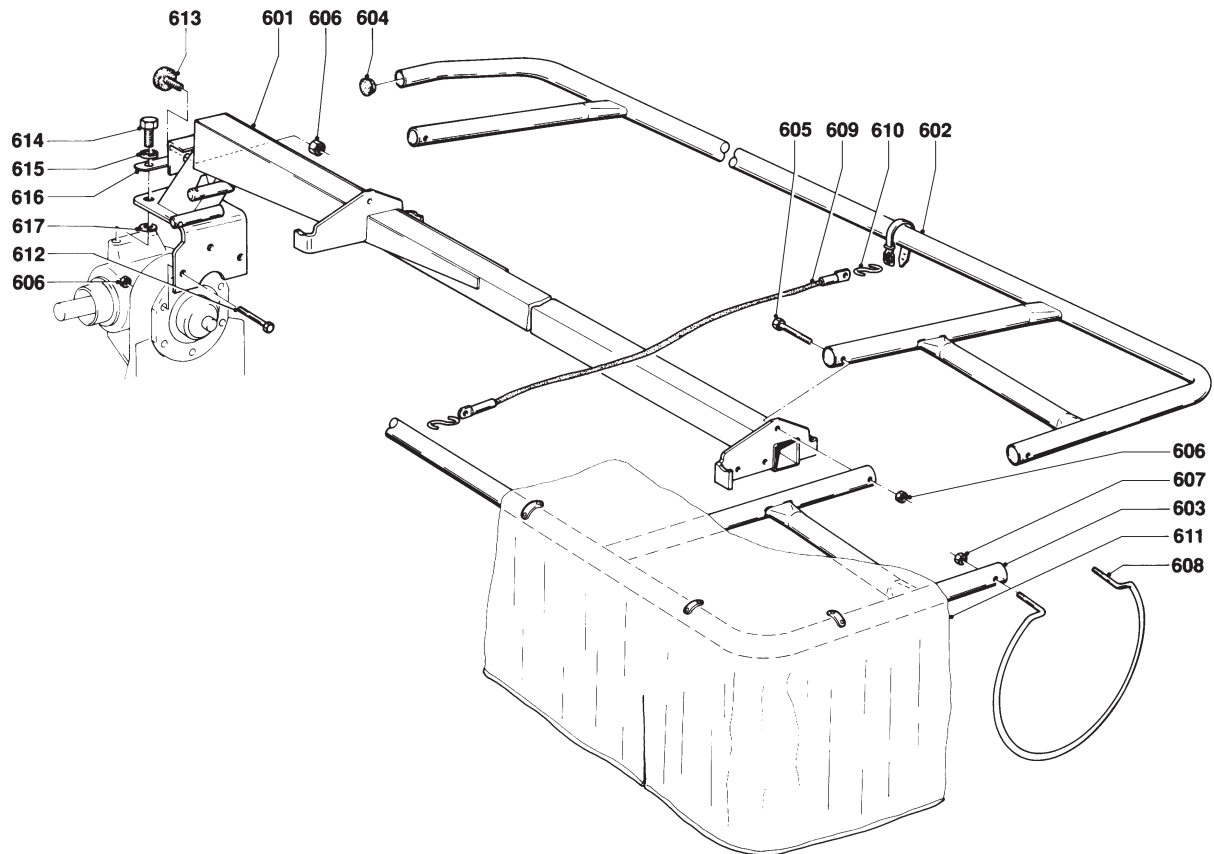
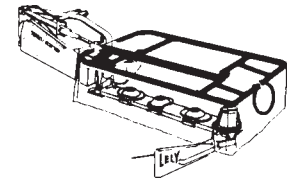
REF.	ONDERDEELNR. PART NUMBER REFERENCE TEILNUMMER	AANTAL QUANTITY QUANTITE ANZAHL
------	--	--

165 205

591	4.1201.2461.0	(2-4) (3-5)	A = 252 mm
			Onder glijslof 531/571
			Underneath skid 531/571
			Au-dessous du patin 531/71
			Unter Gleitkufen 531/571
593	4.1229.0240.0	- (1)	= REF. 581-583 [←-160→]
594	4.1225.0540.0	(3) (3)	= REF. 586-588 [←-125→]

# LELY

OPTIMO	type number type number numéro de type Typnummer	vanaf serienummer as from serial number après numéro de serie ab Seriennummer
165	4.1201.0000.1	955 - 0720
205	4.1202.0000.1	957 - 2800



E007-05-00

REF.	ONDERDEELNR. PART NUMBER REFERENCE TEILNUMMER	AANTAL QUANTITY QUANTITE ANZAHL
------	--	--

165 205

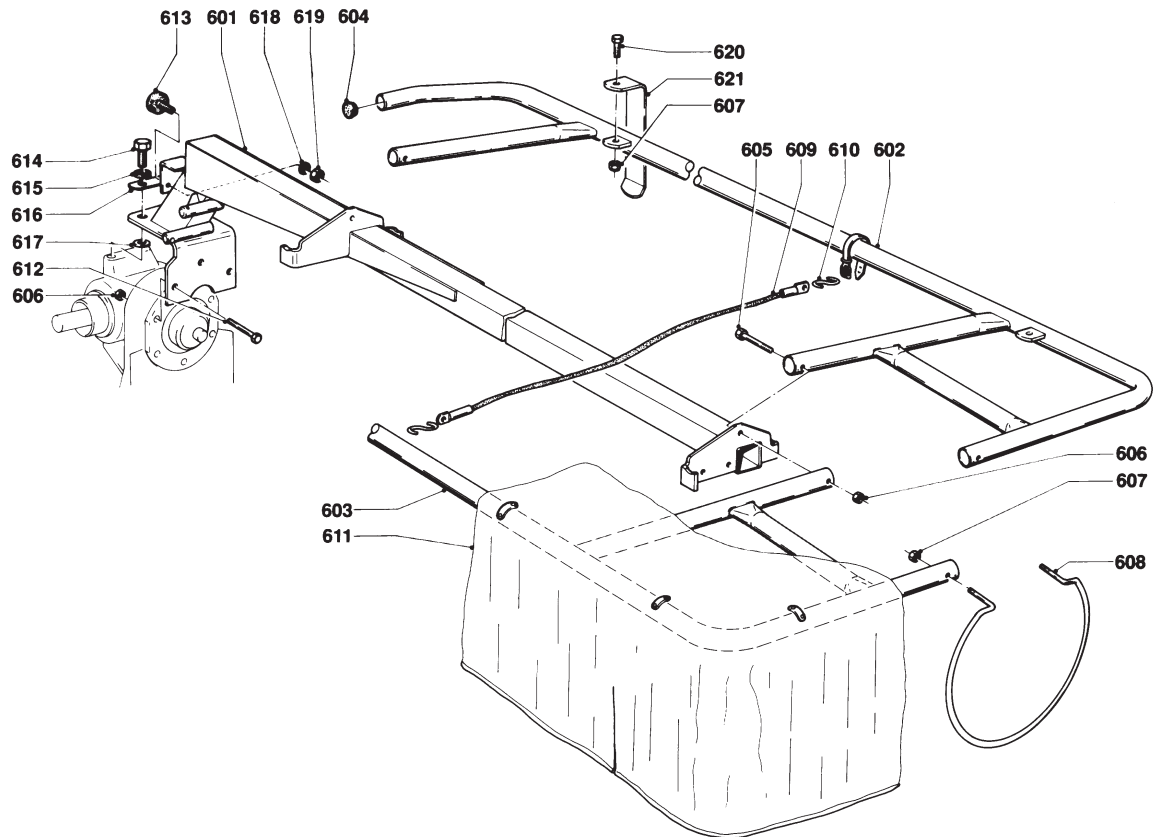
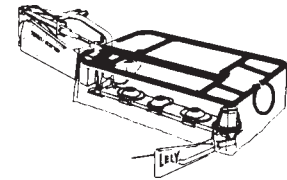
601	4.1201.2222.0	1 -	
	4.1202.2012.0	- 1	
602	4.1201.0620.0	1 -	
	4.1202.0542.0	- 1	
603	4.1201.0611.0	1 -	
	4.1202.0611.0	- 1	
604	9.1108.0059.1	2 2 Ø34	
605	9.1113.0100*1	2 2 M10x90 DIN 931-8.8	
606	9.1030.0004*2	5 5 M10 DIN 985-8	
607	9.1030.0012*3	2 2 M8 DIN 985-8	
608	4.1210.1496.0	1 1	
609	4.1210.1498.0	2 2	
610	9.1147.0005*5	4 4 No. 50	
611	4.1201.1465.0	1 -	
	4.1202.1498.0	- 1	
612	9.1113.0156*1	2 2 M10x85 DIN 931-10.9	
613	9.1105.0001.1	1 1 M10x32	
614	9.1113.0178*2	2 2 M14x35 DIN 933-10.9	
615	9.1051.0005*3	2 2 A14,5 DIN 6798	[////]
616	4.1201.1479.0	1 1	
617	9.1048.0053*5	2 2 A15 DIN 125	[—]

REF.	ONDERDEELNR. PART NUMBER REFERENCE TEILNUMMER	AANTAL QUANTITY QUANTITE ANZAHL
------	--	--



# LELY

OPTIMO	type number type number numéro de type Typnummer	vanaf serienummer as from serial number après numéro de serie ab Seriennummer
165	4.1201.0000.1	981 - 0501
205	4.1202.0000.1	981 - 0501



E007-07-01

REF.	ONDERDEELNR. PART NUMBER REFERENCE TEILNUMMER	AANTAL QUANTITY QUANTITE ANZAHL
------	--	--

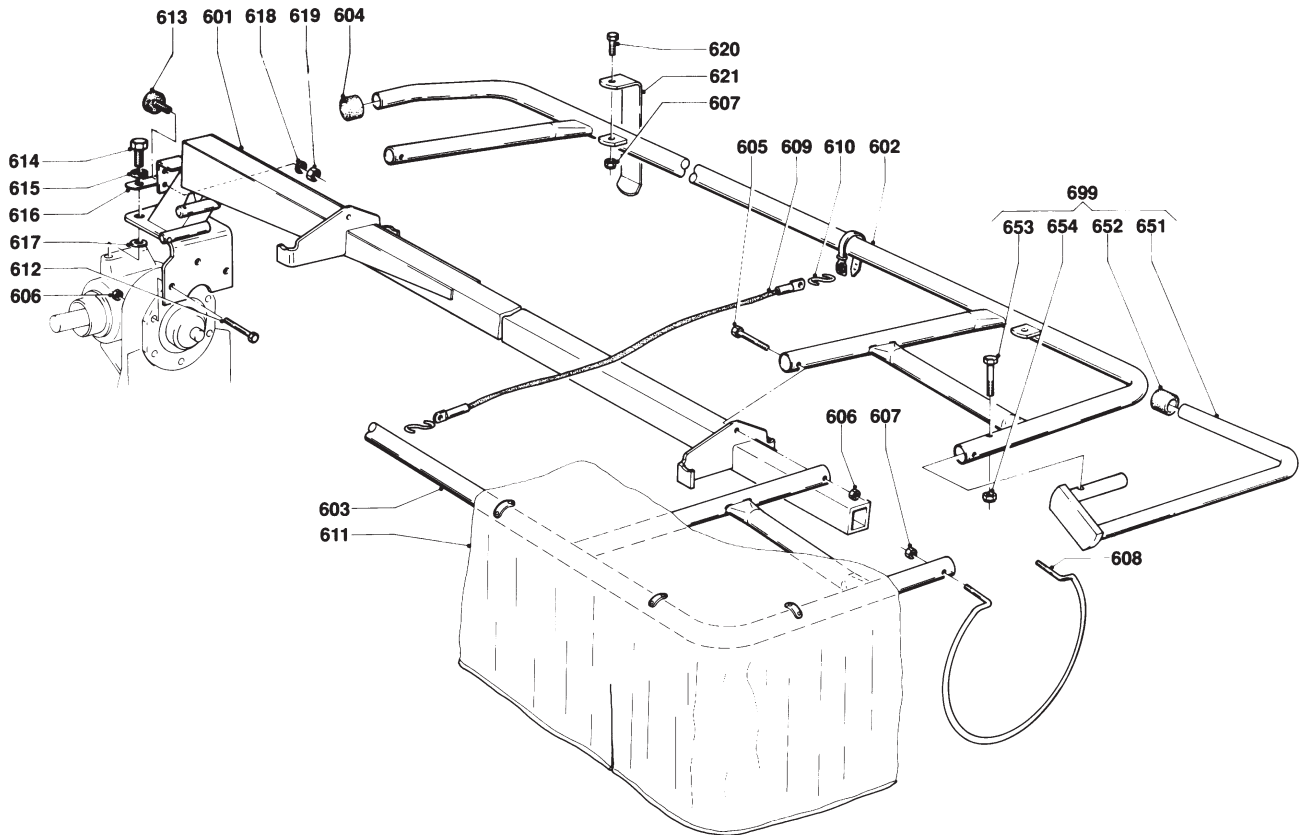
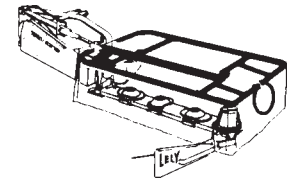
165 205

601	4.1201.2222.0	1 -
	4.1202.2012.0	- 1
602	4.1201.0620.0	1 -
	4.1202.0542.0	- 1
603	4.1201.0611.0	1 -
	4.1202.0611.0	- 1
604	9.1108.0059.1	2 2 Ø34
605	9.1113.0100*1	2 2 M10x90 DIN 931-8.8
606	9.1030.0004*2	4 4 M10 DIN 985-8
607	9.1030.0012*3	4 4 M8 DIN 985-8
608	4.1210.1496.0	1 1
609	4.1210.1498.0	2 2
610	9.1147.0005*5	4 4 No. 50
611	4.1201.1465.0	1 -
	4.1202.1498.0	- 1
612	9.1113.0156*1	2 2 M10x85 DIN 931-10.9
613	9.1105.0011.4	1 1 M10x28
614	9.1113.0178*2	2 2 M14x35 DIN 933-10.9
615	9.1051.0005*3	2 2 A14,5 DIN 6798
616	4.1201.1479.0	1 1
617	9.1048.0053*5	2 2 A15 DIN 125
618	9.1051.0002*0	1 1 A10,5 DIN 6798
619	9.1029.0005*4	1 1 M10 DIN 934-8
620	9.1113.0014*6	2 2 M8x20 DIN 933-8.8
621	4.1211.0287.0	2 2

REF.	ONDERDEELNR. PART NUMBER REFERENCE TEILNUMMER	AANTAL QUANTITY QUANTITE ANZAHL
------	--	--

# LELY

OPTIMO	type number type number numéro de type Typnummer	vanaf serienummer as from serial number après numéro de série ab Seriennummer
165	4.1201.0002.1	999 - 0751
205	4.1202.0001.1	998 - 0551



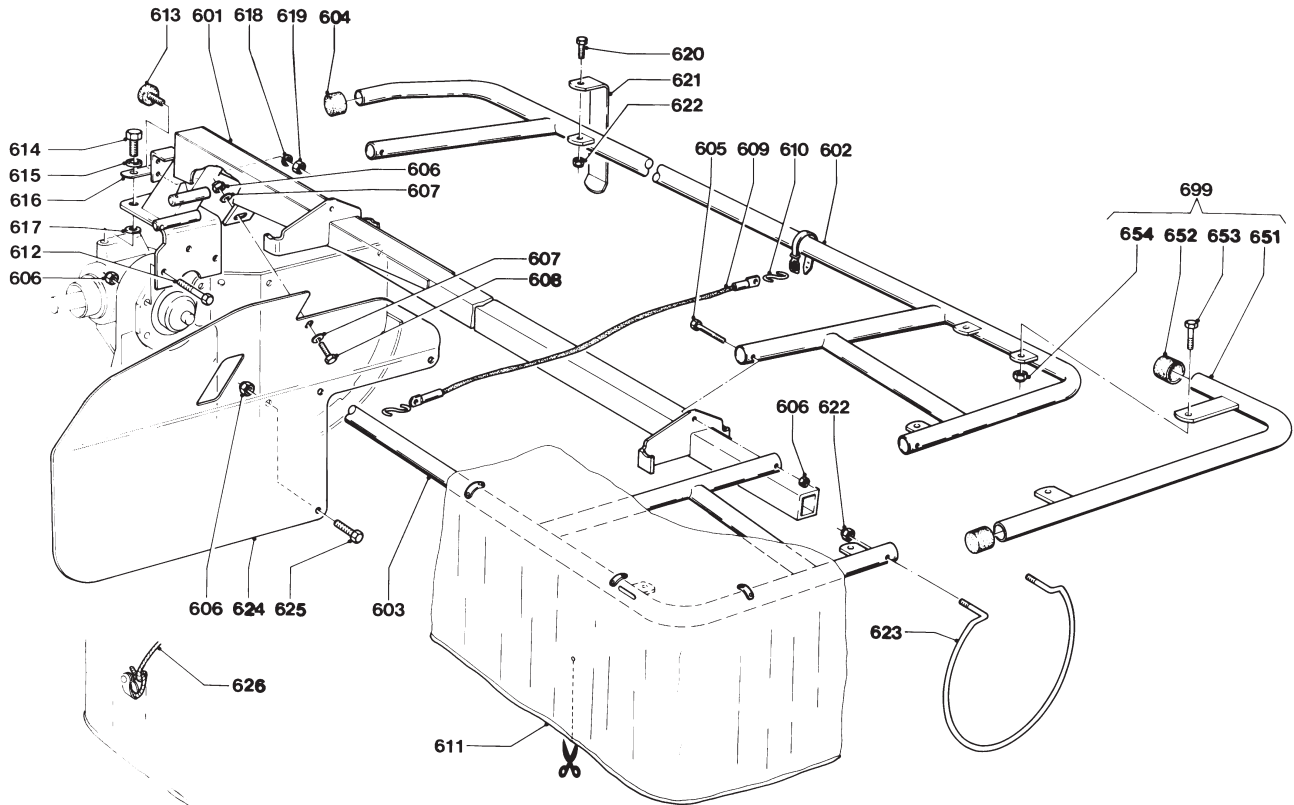
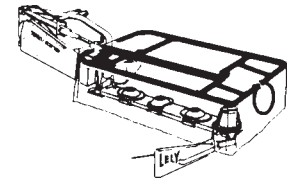
E007-08-01

REF.	ONDERDEELNR. PART NUMBER REFERENCE TEILNUMMER	AANTAL QUANTITY QUANTITE ANZAHL	165 205
601	4.1201.2223.0 4.1202.2013.0	1 - - 1	
602	4.1201.0620.0 4.1202.0542.0	1 - - 1	
603	4.1201.0611.0 4.1202.0611.0	1 - - 1	
604	9.1108.0059.1	2 2	Ø34
605	9.1113.0100*1	2 2	M10x90 DIN 931-8.8
606	9.1030.0004*2	4 4	M10 DIN 985-8
607	9.1030.0012*3	4 5	M8 DIN 985-8
608	4.1210.1496.0	1 1	
609	4.1210.1498.0	2 2	
610	9.1147.0005*5	4 4	No. 50
611	4.1201.1465.0 4.1202.1498.0	1 - - 1	

REF.	ONDERDEELNR. PART NUMBER REFERENCE TEILNUMMER	AANTAL QUANTITY QUANTITE ANZAHL	
612	9.1113.0156*1	2	M10x85 DIN 931-10.9
613	9.1105.0011.4	1	M10x28
614	9.1113.0178*2	2	M14x35 DIN 933-10.9
615	9.1051.0005*3	2	A14,5 DIN 6798 [//////]
616	4.1201.1479.0	1	
617	9.1048.0053*5	2	A15 DIN 125 [———]
618	9.1051.0002*0	1	A10,5 DIN 6798 [//////]
619	9.1029.0005*4	1	M10 DIN 934-8
620	9.1113.0014*6	2 / 3	M8x20 DIN 933-8.8
621	4.1211.0287.0	2 / 3	
651	4.1201.2430.0	1	
652	9.1108.0059.1	1	Ø34
653	9.1113.0035*6	1	M10x50 DIN 931-8.8
654	9.1030.0004*2	1	M10 DIN 985-8
699	4.1201.2440.0	1	= REF. 651-654 Zeildoekbeschermer Cover protection bracket Protection bâche Planenschutzbügel

# LELY

OPTIMO	type number type number numéro de type Typnummer	vanaf serienummer as from serial number après numéro de série ab Seriennummer
165	4.1201.0004.1	1010 - 0501
205	4.1202.0003.1	1010 - 0501



E007-09-10

REF.	ONDERDEELNR. PART NUMBER REFERENCE TEILNUMMER	AANTAL QUANTITY QUANTITE ANZAHL
------	--	--

165 / 205

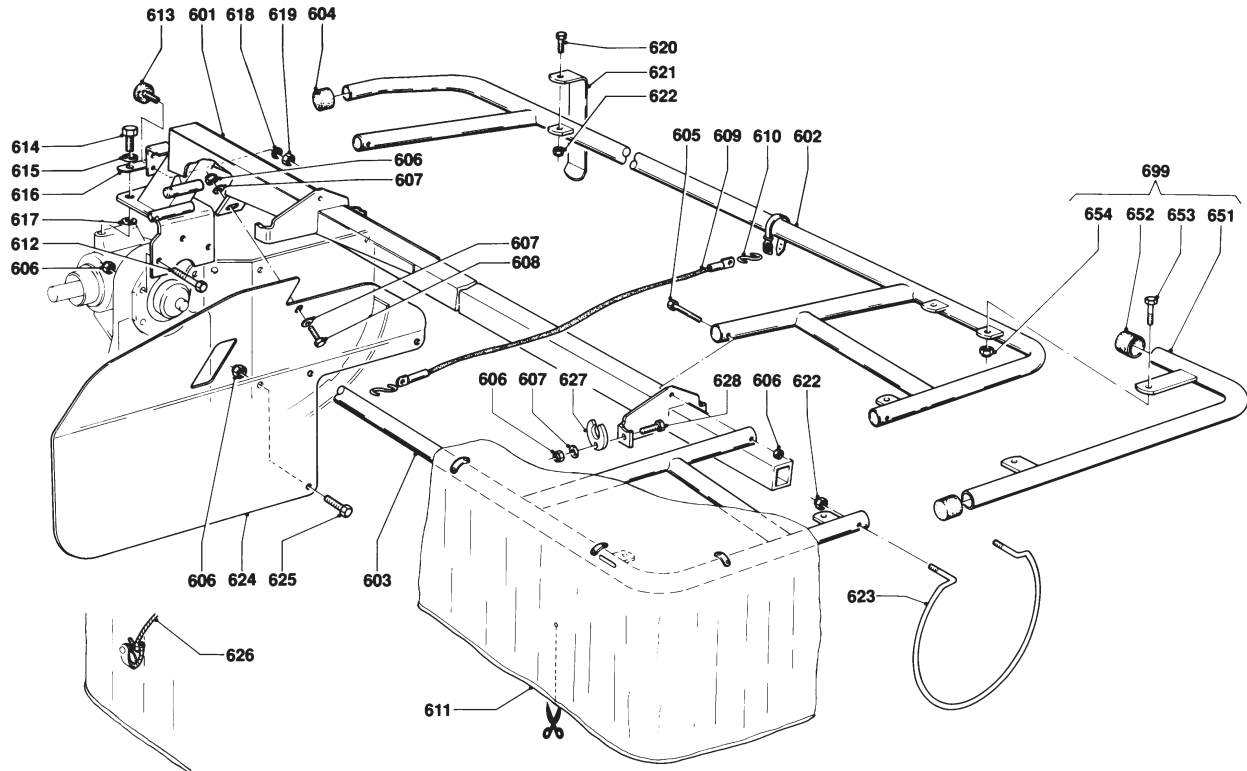
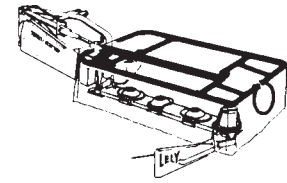
601	4.1201.2224.0 4.1202.2014.0	1 / - - / 1
602	4.1201.0621.0 4.1202.0543.0	1 / - - / 1
603	4.1201.0612.0 4.1202.0612.0	1 / - - / 1
604	9.1108.0059.1	2 Ø34
605	9.1113.0100*1	2 M10x90 DIN 931-8.8
606	9.1030.0004*2	8 M10 DIN 985-8
607	9.1048.0007*1	2 A10,5 DIN 125 [ ]
608	9.1113.0029*0	1 M10x25 DIN 933-8.8
609	4.1210.1498.0	2
610	9.1147.0005*5	4 No. 50
611	4.1201.1460.0 4.1201.1459.0 4.1202.1497.0	1 165-PES (1) 165-ARAMIDE 1 205-PES
612	9.1113.0156*1	2 M10x85 DIN 931-10.9
613	9.1105.0011.4	1 M10x28
614	9.1113.0178*2	2 M14x35 DIN 933-10.9
615	9.1051.0005*3	2 A14,5 DIN 6798 [ ]
616	4.1201.1479.0	1

REF.	ONDERDEELNR. PART NUMBER REFERENCE TEILNUMMER	AANTAL QUANTITY QUANTITE ANZAHL
------	--	--

617	9.1048.0053*5	2 A15 DIN 125 [ ]
618	9.1051.0002*0	1 A10,5 DIN 6798 [ ]
619	9.1029.0005*4	1 M10 DIN 934-8
620	9.1113.0014*6	2 / 3 M8x20 DIN 933-8.8
621	4.1211.0287.0	2 / 3
622	9.1030.0012*3	4 / 5 M8 DIN 985-8
623	4.1210.1496.0	1
624	4.1201.1461.0	1
625	9.1113.0027*5	3 M10x20 DIN 933-8.8
626	4.1201.1458.0	1 Ø6x0,9m (1m= 9.1163.0004.2)
651	4.1201.0640.0	2
652	9.1108.0059.1	4 Ø34
653	9.1113.0128*1	4 M8x25 DIN 933-8.8
654	9.1030.0012*3	4 M8 DIN 985-8
699	4.1201.0630.8	1 = REF. 651-654 (= 2x)

# LELY

OPTIMO	type number type number numéro de type Typnummer	vanaf serienummer as from serial number après numéro de serie ab Seriennummer
165	4.1201.0005.1	10203 - 0501
165	4.1201.0006.1	10402 - 0501
205	4.1202.0004.1	10109 - 0501
205	4.1202.0005.1	10402 - 0501



E007-10-00

REF.	ONDERDEELNR. PART NUMBER REFERENCE TEILNUMMER	AANTAL QUANTITY QUANTITE ANZAHL
------	--	--

165 / 205

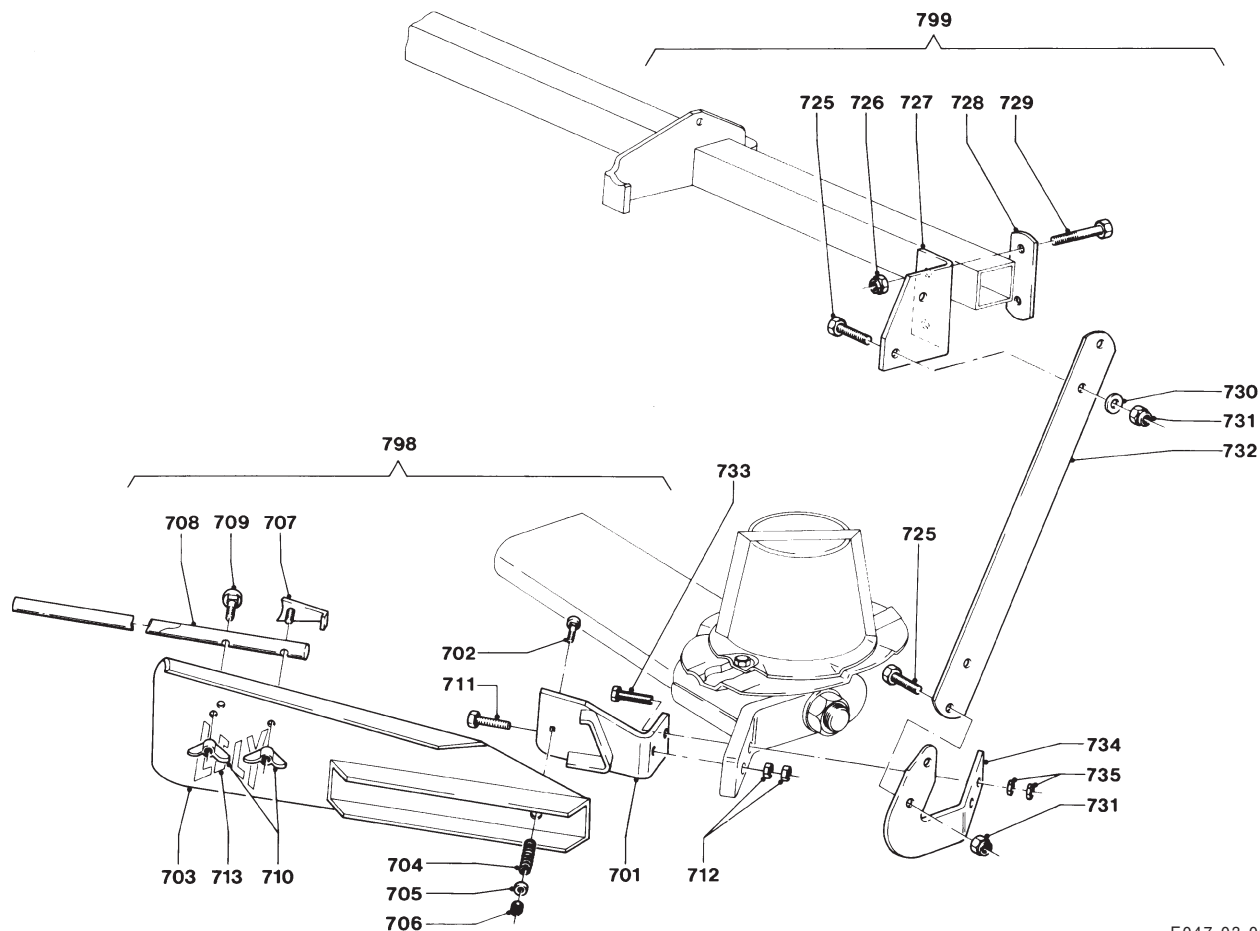
601	4.1201.2224.0 4.1202.2014.0	1 / - - / 1
602	4.1201.0621.0 4.1202.0543.0	1 / - - / 1
603	4.1201.0612.0 4.1202.0612.0	1 / - - / 1
604	9.1108.0059.1	2 Ø34
605	9.1113.0100*1	2 M10x90 DIN 931-8.8
606	9.1030.0004*2	10 M10 DIN 985-8
607	9.1048.0007*1	4 A10,5 DIN 125 [ ]
608	9.1113.0029*0	1 M10x25 DIN 933-8.8
609	4.1210.1498.0	2
610	9.1147.0005*5	4 No. 50
611	4.1201.1460.0 4.1201.1459.0 4.1202.1497.0	1 165-PES (1) 165-ARAMIDE 1 205-PES
612	9.1113.0156*1	2 M10x85 DIN 931-10.9
613	9.1105.0011.4	1 M10x28
614	9.1113.0178*2	2 M14x35 DIN 933-10.9
615	9.1051.0005.3	2 A14,5 DIN 6798 [ ]
616	4.1201.1479.0	1

REF.	ONDERDEELNR. PART NUMBER REFERENCE TEILNUMMER	AANTAL QUANTITY QUANTITE ANZAHL
------	--	--

617	9.1048.0053*5	2 A15 DIN 125 [ ]
618	9.1051.0002.0	1 A10,5 DIN 6798 [ ]
619	9.1029.0005*4	1 M10 DIN 934-8
620	9.1113.0341*4	2 / 3 M8x20 DIN 933-10.9
621	4.1211.0287.0	2 / 3
622	9.1030.0040*3	4 / 5 M8 DIN 985-10
623	4.1210.1496.0	1
624	4.1201.1461.0	1
625	9.1113.0027*5	3 M10x20 DIN 933-8.8
626	4.1201.1458.0	1 Ø6x0,9m (1m= 9.1163.0004.2)
627	4.1225.1486.0	2
628	9.1113.0117*4	2 M10x35 DIN 933-8.8
651	4.1201.0640.0	2
652	9.1108.0059.1	4 Ø34
653	9.1113.0128*1	4 M8x25 DIN 933-8.8
654	9.1030.0012*3	4 M8 DIN 985-8
699	4.1201.0630.8	1 = REF. 651-654 (= 2x)

LELY

OPTIMO	type number type number numéro de type Typnummer	vanaf serienummer as from serial number après numéro de serie ab Seriennummer	OPTIMO	type number type number numéro de type Typnummer	vanaf serienummer as from serial number après numéro de serie ab Seriennummer
165	4.1201.0000.1	949 - 0526	205	4.1202.0000.1	949 - 0501
	4.1201.0002.1	997 - 0501		4.1202.0001.1	997 - 0501
	4.1201.0004.1	1010 - 0501		4.1202.0003.1	1010 - 0501
	4.1201.0005.1	10203 - 0501		4.1202.0004.1	10109 - 0501
	4.1201.0006.1	10402 - 0501		4.1202.0005.1	10402 - 0501



E047-03-00

REF.	ONDERDEELNR. PART NUMBER REFERENCE TEILNUMMER	AANTAL QUANTITY QUANTITE ANZAHL
------	--	--

701	4.1201.0331.0	1
702	9.1058.0030*0	1
703	4.1201.0530.0	1
704	9.1090.0012*6	1
705	9.1048.0012*6	1
706	9.1030.0013*4	1
707	4.1201.0600.0	1
708	4.1201.1476.0	1
709	9.1058.0035*5	1
710	9.1032.0002*5	2
711	9.1113.0211*3	2
	9.1113.0118*5	(2)
712	9.1029.0008*0	4
713	9.1170.0001.6	1

798 4.1201.0110.0 1 = REF. 701-713

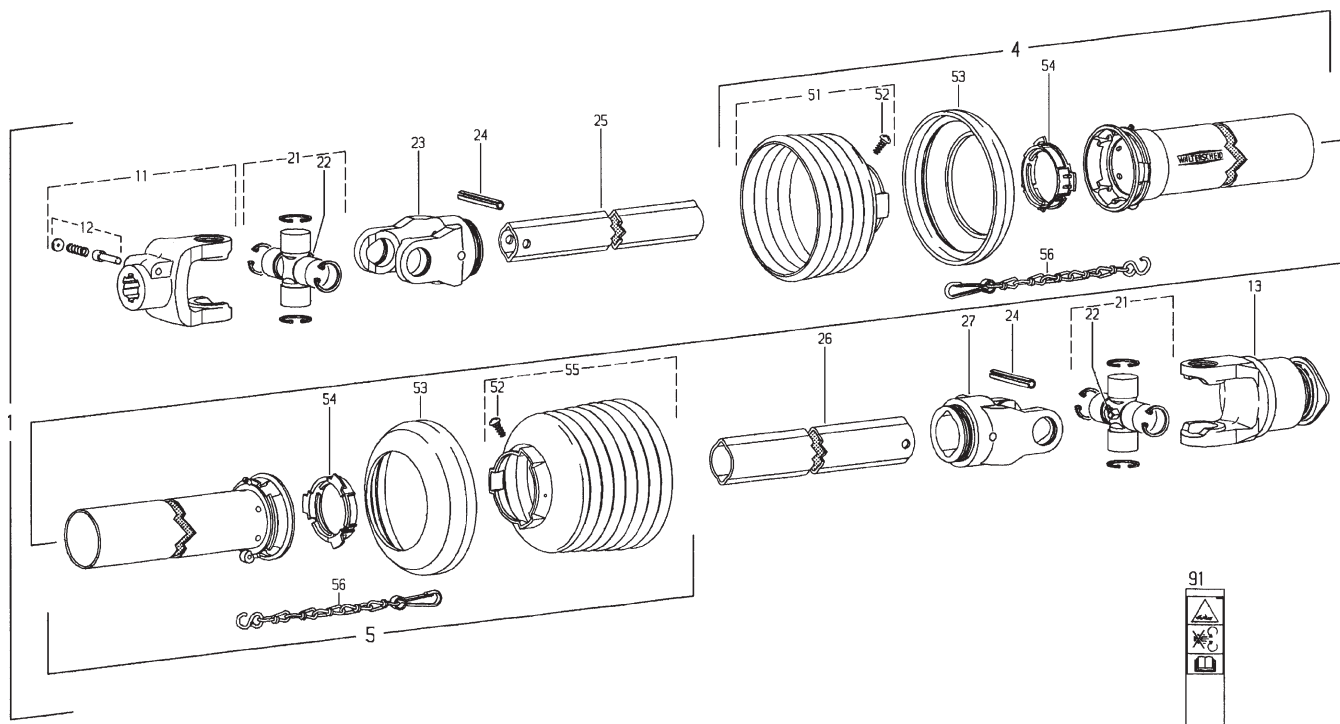
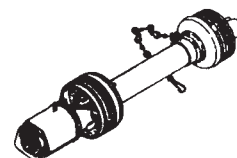
REF.	ONDERDEELNR. PART NUMBER REFERENCE TEILNUMMER	AANTAL QUANTITY QUANTITE ANZAHL
------	--	--

725	9.1113.0117*4	4
726	9.1030.0013*4	2
727	4.1219.0196.0	1
728	4.1207.0190.0	1
729	9.1113.0063*6	2
730	9.1048.0062*0	2
731	9.1030.0004*2	4
732	4.1219.0197.0	1
733	9.1113.0221*3	2
	9.1113.0055*5	(2)
734	4.1219.0198.0	1
735	9.1029.0008*0	4

799 4.1203.0220.0 1 = REF. 725-735

LELY

OPTIMO	type number type number numéro de type Typnummer	vanaf serienummer as from serial number après numéro de serie ab Seriennummer
165	4.1201.0000.1	960 - 0501
	4.1201.0002.1	997 - 0501
	4.1201.0004.1	1010 - 0501
	4.1201.0005.1	10203 - 0501
205	4.1202.0000.1	960 - 0501
	4.1202.0001.1	997 - 0501
	4.1202.0003.1	1010 - 0501
	4.1202.0004.1	10109 - 0501



Ew001-06-00

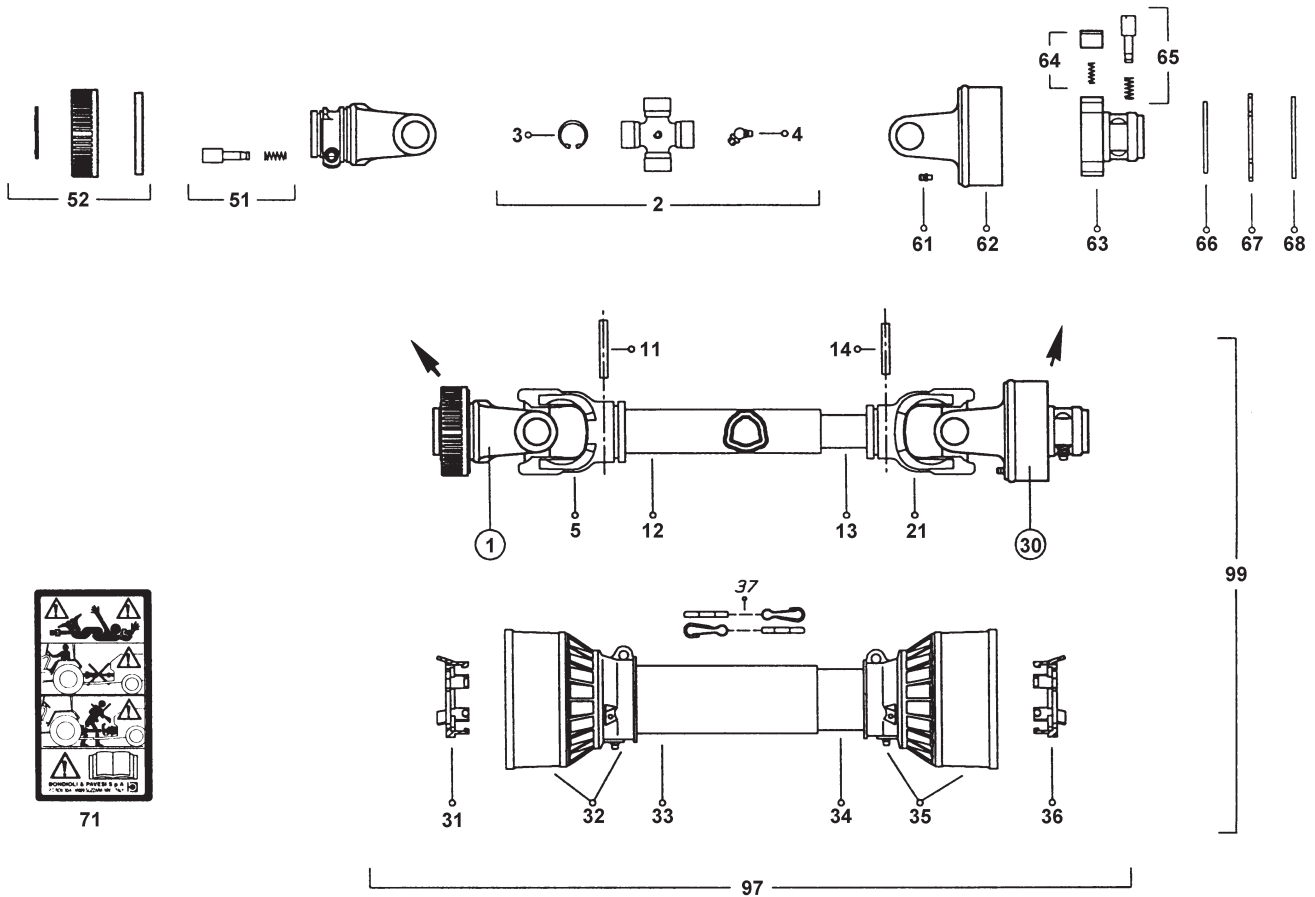
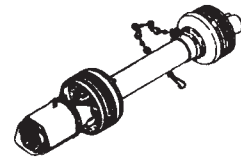
REF.	ONDERDEELNR. PART NUMBER REFERENCE TEILNUMMER	AANTAL QUANTITY QUANTITE ANZAHL	
------	--	--	--

1	9.1154.0082.5	1	W2300-SD15-860-F5/1R = REF. 11-93
4	85.105	1	SDH15; L= 670 mm
5	85.104	1	SDH15; L= 660 mm
11	21.10.00	1	1.3/8" (6)
12	33.91.07	1	AGRASET 101
13	56.141.40	1	F5/1R-2300-1.3/8" (6)
21	21.00.00	2	
22	63.27.00	2	BM 8x1
23	21.11.00	1	RG2300-Ov
24	61.05.04	2	Ø10x65 DIN 1481
25	75.11.96	1	Ov; L= 740 mm
26	75.16.16	1	1; L= 725 mm
27	21.12.00	1	RG2300-1
51	85.15.05	1	n= 5
52	60.15.00	2	4x10
53	82.85.00	2	
54	82.83.06	2	
55	85.15.06	1	n= 6
56	82.36.03	2	
91	16.61.175	1	
92	38.33.33	1	
93	38.33.34	1	

REF.	ONDERDEELNR. PART NUMBER REFERENCE TEILNUMMER	AANTAL QUANTITY QUANTITE ANZAHL	
------	--	--	--

# LELY

OPTIMO	type number type number numéro de type Typnummer	vanaf serienummer as from serial number après numéro de serie ab Seriennummer
165	4.1201.0005.1	10304 - 0616
165	4.1201.0006.1	10402 - 0501
205	4.1202.0004.1	10307 - 0808
205	4.1202.0005.1	10402 - 0501



Eb001-01-01

REF.	ONDERDEELNR. PART NUMBER REFERENCE TEILNUMMER	AANTAL QUANTITY QUANTITE ANZAHL	
1	4.9000.0071.0	1	= REF. 1+51+52 1.3/8" (6)
2	4.9000.0060.0	2	= REF. 2+3+4
3	4.9000.0073.0	8	
4	4.9000.0066.0	2	
5	4.9000.0067.0	1	
11	4.9000.0066.0	1	Ø8x61
12	4.9000.0072.0	1	L= 720 mm
13	4.9000.0069.0	1	L= 720 mm
14	4.9000.0042.0	1	Ø8x54
21	4.9000.0068.0	1	
30	4.9000.0049.0	1	= REF. 61-68 RA1/4-1.3/8" (6)
31	4.9000.0007.0	1	
32	4.9000.0070.0	1	Type/typ F
33	4.9000.0074.0	1	L= 667 mm
34	4.9000.0030.0	1	L= 667 mm
35	4.9000.0050.0	1	Type/typ F
36	4.9000.0002.0	1	
37	4.9000.0003.0	2	
51	4.9000.0051.0	1	
52	4.9000.0015.0	1	

REF.	ONDERDEELNR. PART NUMBER REFERENCE TEILNUMMER	AANTAL QUANTITY QUANTITE ANZAHL	
61	4.9000.0052.0	1	
62	4.9000.0053.0	1	RA1
63	4.9000.0054.0	1	1.3/8" (6)
64	4.9000.0055.0	3	
65	4.9000.0051.0	1	
66	4.9000.0016.0	1	
67	4.9000.0017.0	1	
68	4.9000.0065.0	1	
71	4.9000.0075.0	1	
97	4.9000.0056.0	1	= REF. 31-37 Type/typ F
99	9.1154.0187.5	1	= REF. 1-97 Type/typ 4 L= 860 mm