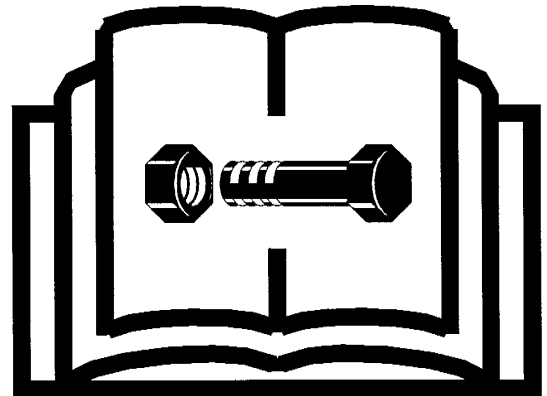
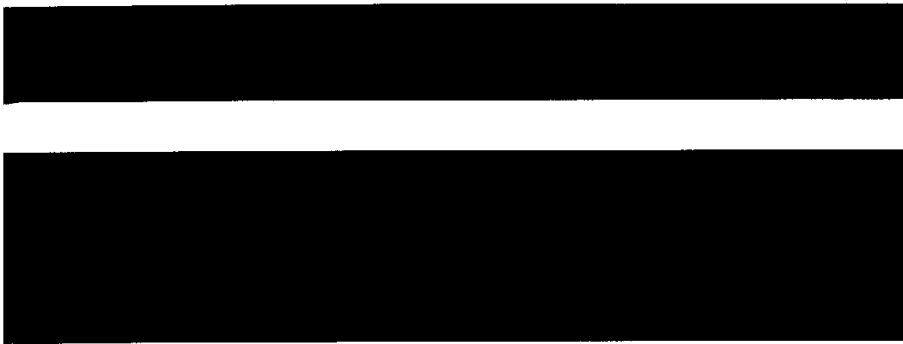


Vermeer

*TD120/TD200
Tedder*



Parts Manual

PMFE96-1
TD120 SERIAL NO. 101 UP
TD200 SERIAL NO. 101 UP
ORDER NO. 105400-L75

INTRODUCTION

HOW TO USE THE MANUAL

This manual contains illustrations and parts lists of components and assemblies which make up the machine. Each page consists of the name of the assembly or component, a figure number, reference numbers, part numbers, part names, and the quantities of the parts used.

Assembly or component name helps identify the illustration and parts list for each figure. This name also helps locate the general area of the machine where the assembly or component can be located.

Figure numbers are used to identify each assembly or component and to group these assemblies or components into major categories.

Reference numbers shown in a column refers to the numbered parts in the illustration. This ties the part in the illustration to the part number and description in the parts list.

EN-OM-0222-AP92

Part numbers are used to identify individual parts or part assemblies.

Part descriptions provide the name of the part, plus additional information such as dimensional specifications and what parts are grouped together to form part assemblies, which helps you identify the part(s).

Quantities listed for each figure are only for that assembly or component and not the total used per machine.

Parts are listed by part number in numerical order in the back portion of the manual. After each part number is a list of references where the part is used in the manual.

This parts manual is not intended to be a complete guide for machine service or repairs. Contact your Vermeer dealer for any of your service or technical requirements.

ORDERING PARTS

Parts for repair or replacement are available through our network of authorized dealers located throughout the world.

Use only authorized Vermeer parts for repair or replacement. Always give the serial number

EN-OM-0223-AP92

and model number of the machine for which parts are being ordered. When ordering parts for component(s), which are not manufactured by Vermeer Manufacturing, also give the serial number of that component(s). Order all parts by part number, part name, and quantity needed.

UPDATING AND REORDERING MANUALS

The parts lists, illustrations, and specifications in this manual are based on the latest information available at time of publication. Your machine may have product improvements and options not yet contained in this manual.

Vermeer Manufacturing Company reserves the right to make changes at any time without notice or obligation to you.

EN-OM-0224-AP92

Your dealer will receive notice of these changes and can assist you with accurate parts identification when ordering.

A copy of this manual is supplied with each machine. Additional copies are available through your dealer. When ordering additional manuals, use the reorder number listed on the front cover and the quantity needed.

Copyright 1996
Vermeer Manufacturing Company
Box 200, New Sharon Road
Pella, Iowa 50219-0200

EN07026.A96

PARTS LIST TABLE OF CONTENTS

FRAME ASSEMBLIES - SECTION 1

DECAL ASSEMBLY (FIG. 1-1)	PAGE 1-1
DISC/AXLE ASSEMBLY (FIG. 1-8)	PAGE 1-10, 1-11
DRIVELINE ASSEMBLY (FIG. 1-4)	PAGE 1-4, 1-5
DRIVELINE ASSEMBLY (FIG. 1-4A)	PAGE 1-5A, 1-5B
EXTERNAL BOX ASSEMBLY (FIG. 1-7)	PAGE 1-8, 1-9
INTERNAL BOX ASSEMBLY - TD-200 (FIG. 1-6)	PAGE 1-7
MANUAL SPRING LIFT ASSEMBLY - TD-200 (FIG. 1-12)	PAGE 1-15, 1-15A
PROTECTION BAR ASSEMBLY - TD-120 (FIG. 1-9)	PAGE 1-12, 1-12A
PROTECTION BAR ASSEMBLY - TD-200 (FIG. 1-10)	PAGE 1-13
REINFORCEMENT BRACKET ASSEMBLY - TD-200 (FIG. 1-3)	PAGE 1-3
SLOW MOVING VEHICLE SIGN ASSEMBLY (FIG. 1-11)	PAGE 1-14, 1-14A
TONGUE ASSEMBLY (FIG. 1-2)	PAGE 1-2, 1-2A
WING ASSEMBLY - INTERNAL (FIG. 1-5)	PAGE 1-6, 1-6A

HYDRAULIC ASSEMBLIES - SECTION 2

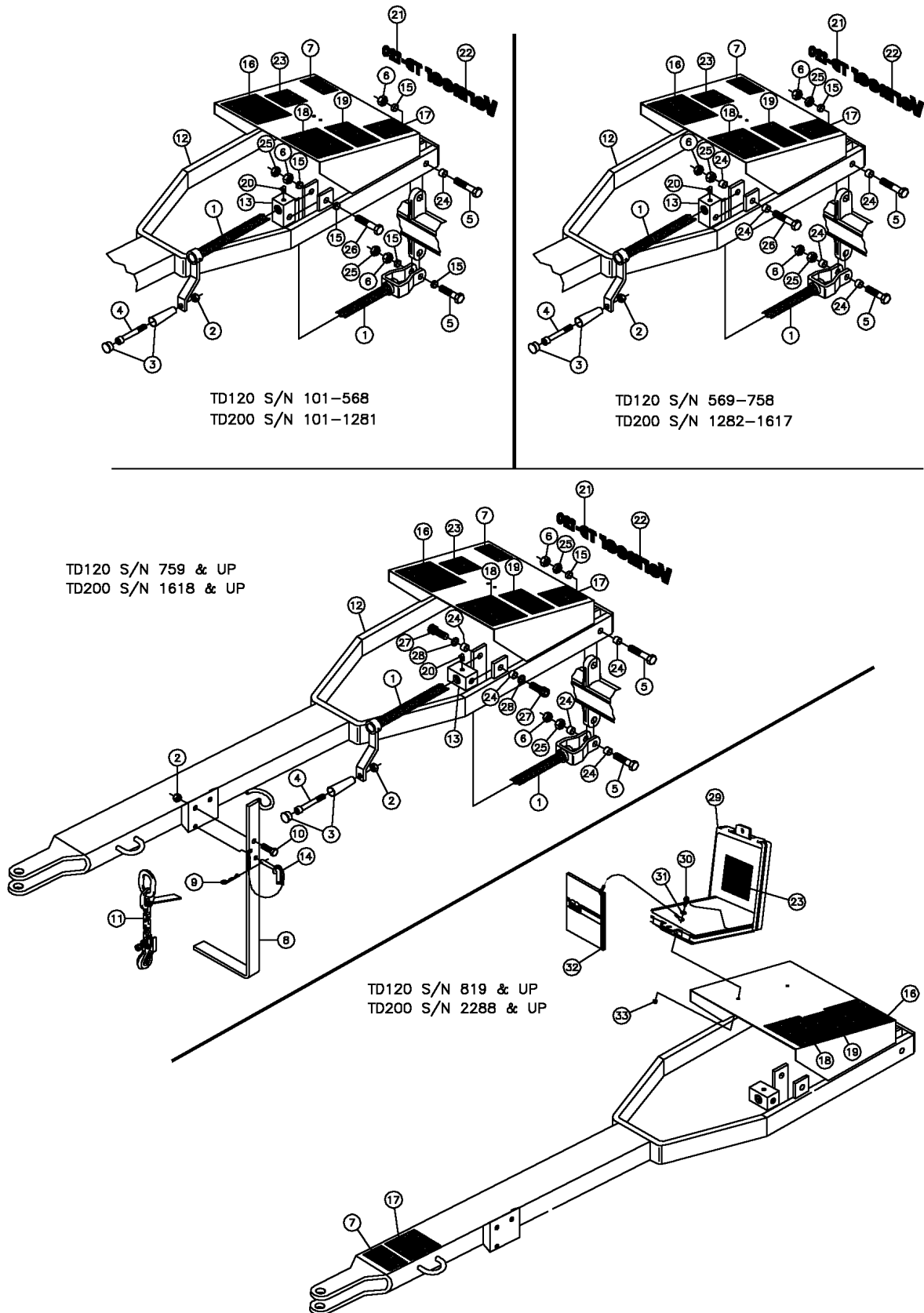
HYDRAULIC CYLINDER ASSEMBLY - TD-200 (FIG. 2-1)	PAGE 2-1, 2-1A
HYDRAULIC CYLINDER COMPONENTS - TD-200 (FIG. 2-3)	PAGE 2-3
HYDRAULIC PLUMBING ASSEMBLY - TD-200 (FIG. 2-2)	PAGE 2-2, 2-2A

REFERENCE SECTION - SECTION 3

BOLT CONVERSION - METRIC TO ENGLISH	PAGE 3-1
CONVERSION CHART - METRIC TO ENGLISH	PAGE 3-2
PART NUMBER INDEX	PAGE 3-3

TONGUE ASSEMBLY

Figure 1-2



TONGUE ASSEMBLY

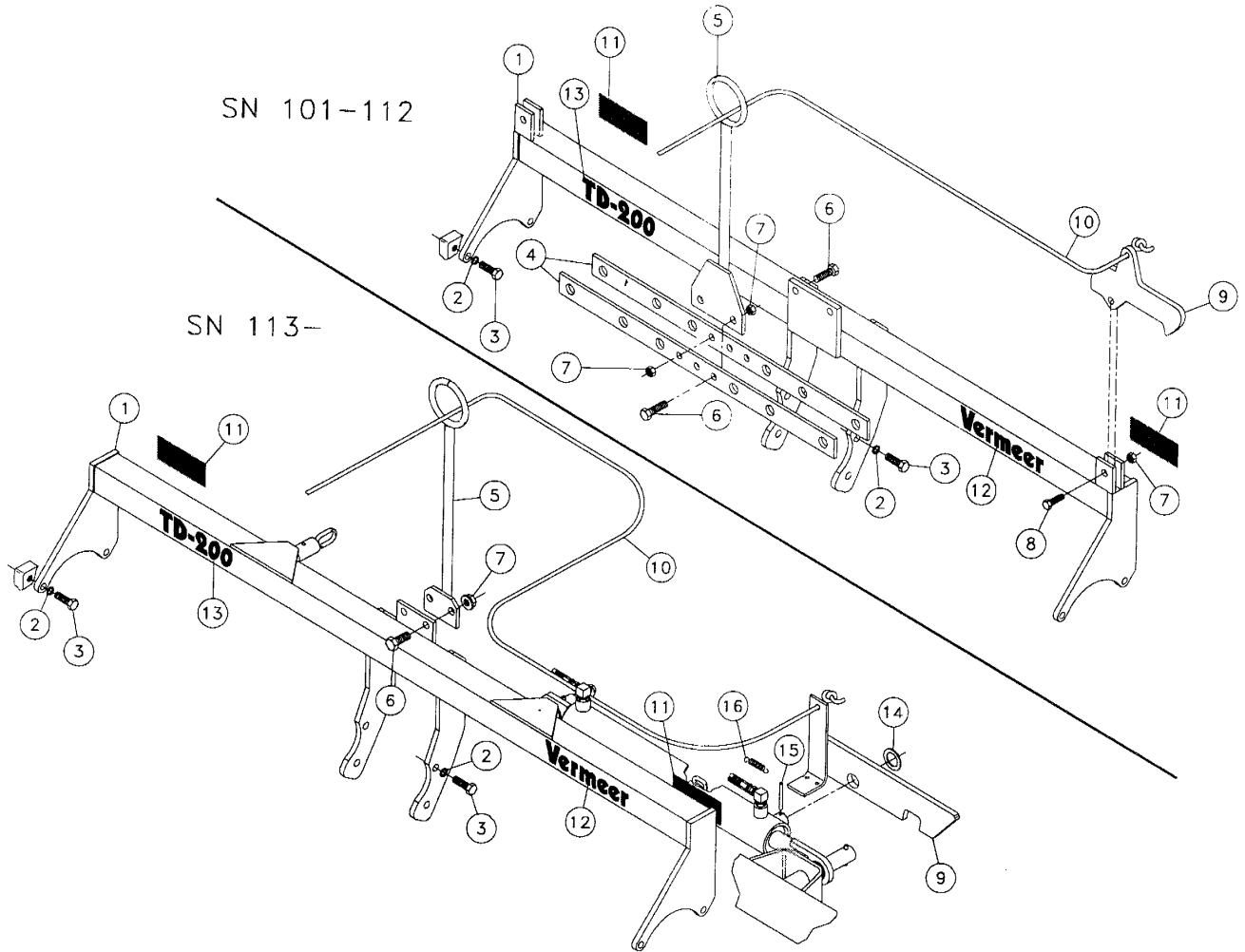
Figure 1-2

REF. NO.	PART NO.	DESCRIPTION	QTY.		SERIAL NO.		REMARKS
			TD120	TD200	TD120	TD200	
1-2 1	126779-001	REGULATING SCREW (SCREW ONLY)	1	1	101-278	101-469	
	126779-003	REGULATING SCREW COMPLETE	1	1	279 & UP	470 & UP	>> BUSHING &
	510500-394	REGULATING SCREW COMPLETE	1	1	569-758	1282-1617	HANDLE INC.
	510501-075	REGULATING SCREW COMPLETE	1	1	759 & UP	1618 & UP	
1-2 2	126780-001	NUT-M12	1	1			
1-2 3	126781-001	HANDLE	1	1			
1-2 4	126782-001	CAPSCREW-TCET M12 X 90	1	1			
1-2 5	510502-790	SCREW-SHCS,M16-2.00X80-10.9-YZ	4	4	101-568	101-1281	
	510502-791	SCREW-SHCS,M16-2.00X100-10.9-YZ	4	4	569 & UP	1282 & UP	
1-2 6	126784-001	NUT-M16	4	4			
1-2 7	7000B-192	DECAL-USE 540 PTO	1	1			
1-2 8	126785-001	STAND	1	1			
1-2 9	126786-001	PULL PIN	1	1			
1-2 10	126787-001	BOLT-12 X 35	1	1			
1-2 11	1443-017	CHAIN-1/4 P4 X 59.2 SAFETY	1	1			
1-2 12	126788-001	TONGUE	1	1	101-278	101-469	
	126788-003	TONGUE	1	1	279-568	470-1281	
	126788-005	TONGUE	1	1	569 - 758	1282 - 1617	
	510501-076	TONGUE	1	1	759 & UP	1618 & UP	
1-2 13	126790-001	REGULATING SCREW BLOCK	1	1	101 - 758	101 - 1618	
	510501-074	REGULATING SCREW BLOCK	1	1	759 & UP	1618 & UP	
1-2 14	126791-001	PIN	1	1			
1-2 15	506261-001	BUSHING - 25 X 13	6	6	101 - 568	101 - 1281	
	506261-001	BUSHING - 25 X 13	2	2	569 & UP	1282 & UP	
1-2 16	7000A-141	DECAL-WARNING	1	1			
1-2 17	70000-253	DECAL-DRAWBAR HITCH POINT	1	1			
1-2 18	7000A-140	DECAL-WARNING	1	1			
1-2 19	2326-310	DECAL-WARNING/PROTECTION 3 X 5	1	1			
1-2 20	131075-001	ZERK-900	1	1			
1-2 21	7000A-353	DECAL-MODEL TD-120 1 1/2" HIGH	1	-			
1-2 22	7000A-282	DECAL-VERMEER 1 1/2" (AT)	1	-			
1-2 23	2326-940	DECAL-NOTICE TO OWNERS	1	1			
1-2 24	506262-001	BUSHING - 25 X 25	2	2	101-568	101-1281	
	506262-001	BUSHING - 25 X 25	6	6	569 & UP	1282 & UP	
1-2 25	506042-016	NUT-HEX JAM,M16-2.00,10.9,YZ	2	2			
1-2 26	508478-110	SCREW-HCS,M16-2.00X110,10.9,YZ	1	1	101 - 568	101 - 1281	
	508470-130	SCREW-HCS,M16-2.00X130,10.9,YZ	1	1	569-758	1282-1617	
1-2 27	510502-792	SCREW-SHCS,M16-2.00X45-10.9-YZ	2	2	759 & UP	1618 & UP	
1-2 28	506047-016	WASHER-LOCK-M16-16.6X27.4-3.5-YZ	2	2	759 & UP	1618 & UP	
1-2 29	142410-001	CASE-6"X9"X1" OPERATOR MANUAL	1	1	819 & UP	2288 & UP	
1-2 30	506031-025	SCREW-HCS,M6-1.00X25,8.8,YZ,D933,FT	2	2	819 & UP	2288 & UP	
1-2 31	510337-603	WASHER-FLATSTD-.25-.31X.75-.07-YZ	2	2	819 & UP	2288 & UP	
1-2 32	507880-001	MANUAL ASSEMBLY - TD120/200	1	1	819 & UP	2288 & UP	
1-2 33	128478-001	NUT-HEX NYL M6-1.00 YZ D985	2	2	819 & UP	2288 & UP	

- DOES NOT APPLY TO THIS MODEL

REINFORCEMENT BRACKET ASSEMBLY - TD200

Figure 1-3



REF. NO.	PART NO.	DESCRIPTION	QTY.	SERIAL NO.	REMARKS	
1-3	1	126793-001	REINFORCEMENT (TD200)	1	101-112	
		131079-001	REINFORCEMENT - TD200	1	113-	
1-3	2	115641-001	WASHER M12	8		
1-3	3	100846-001	BOLT-12MX1.75-45	8		
1-3	4	126796-001	MOUNT-CYLINDER	1	101-112	
1-3	5	114753-001	GUIDE-ROPE	1	101-112	
		131048-001	GUIDE-ROPE	1	113-	
		126798-001	SCREW-M12X45	4	101-112	
1-3	6	358-010	BOLT-1/2-13X1" GRADE#5 HEX	2	113-	
		126799-001	NUT M10	6	101-112	
1-3		1809-001	NUT-1/2 SM FLGE CENTER LOCK	2	113-	
1-3	8	126801-001	SCREW M10X40	2	101-112	
1-3	9	126802-001	LOCK-CYLINDER	2	101-112	
		131056-001	LATCH-CYLINDER LEFT (SHOWN)	1	113-	
		131057-001	LATCH-CYLINDER RIGHT	1	113-	
1-3	10	126803-001	CORD	2	101-112	
		1801-021	ROPE 1/4" NYLON - 28.00'	1	113-	
1-3	11	70000-170	DECAL-RED REFLECTOR (AT/UND)	2	101-1105	
1-3	12	7000A-282	DECAL-VERMEER 1 1/2" (AT)	1		
1-3	13	7000A-281	DECAL-MODEL TD-200 (AT)	1		
1-3	14	483-005	WASHER-1 1/2X1X14 GA M.B.	2	113-	
1-3	15	1978-025	PIN-3/16 X 1 1/2 EXPANSION	2	113-	
1-3	16	1789-049	SPRING-EXT.7/16ODX3/8IDX1 1/2	2	113-	

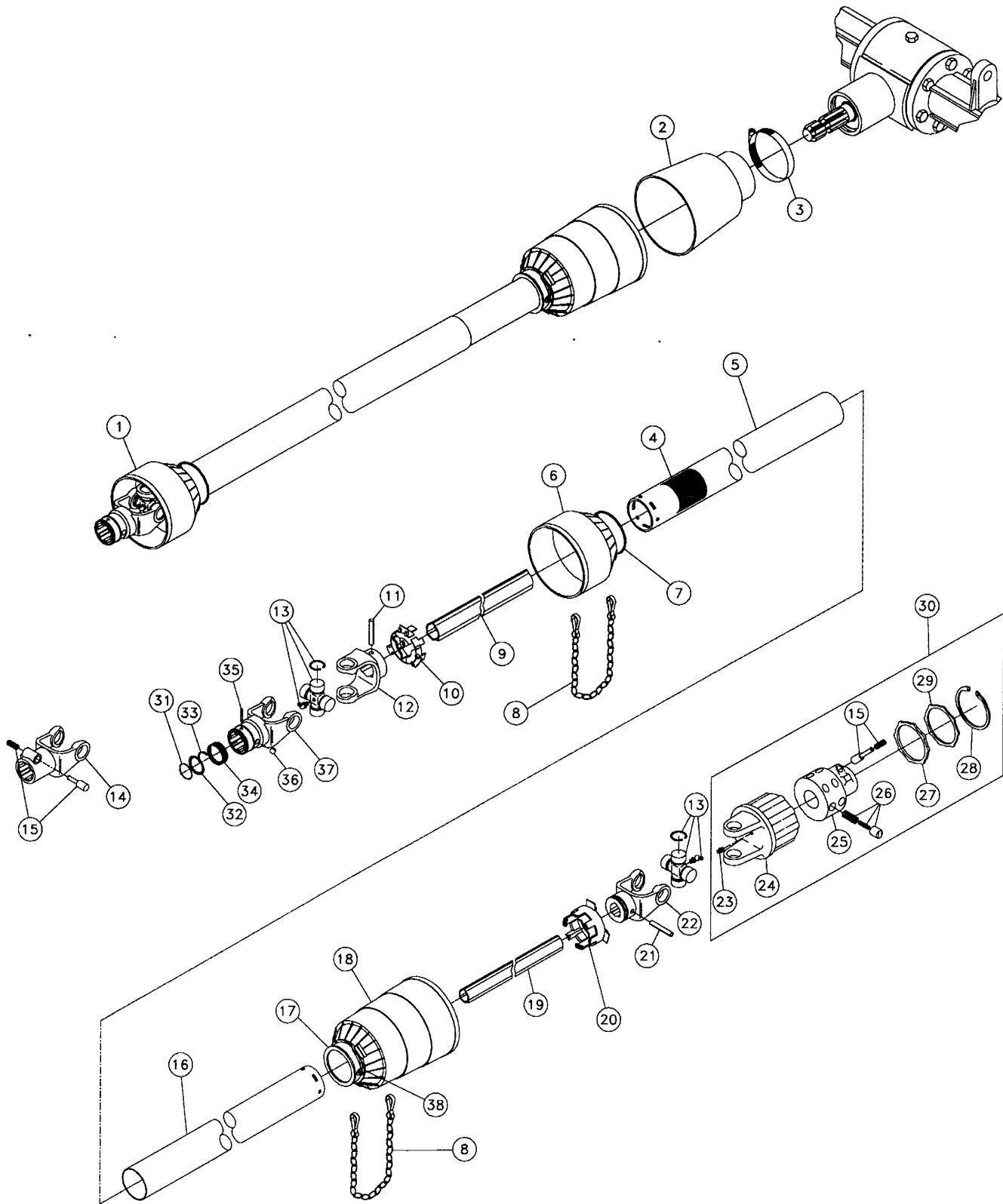
DRIVELINE ASSEMBLY

Figure 1-4

REF. NO.	PART NO.	DESCRIPTION	QTY.	SERIAL NO.		REMARKS
				TD120	TD200	
1-4	1	126775-001 U-JOINT ASSEMBLY (INC. REF. 4-31)	1	101-177	113-253	CHANGED TO DIFFERENT DRIVELINE VENDOR
1-4	2	126776-001 BELL PROTECTION-PTO	1	101-177	113-253	
1-4	3	126778-001 CLAMP-D100	1	101-177	113-253	
1-4	4	70000-108 DECAL-DANGER (AT)	1	101-177	113-253	
1-4	5	2326-902 DECAL-PTO ROTATING DRIVE LINE	1	101-177	113-253	
1-4	6	126775-003 U-JOINT ASSEMBLY-TRACTOR HALF	1	101-177	113-253	
1-4	7	126775-005 U-JOINT ASSY-IMPLEMENT HALF	1	101-177	113-253	
1-4	8	126775-007 PUSH PIN SET	1	101-177	113-253	
1-4	9	126775-009 OUTER YOKE	1	101-177	113-253	
1-4	10	126775-011 CROSS JOURNAL	2	101-177	113-253	
1-4	11	126775-013 CIRCLIP	8	101-177	113-253	
1-4	12	126775-015 ZERK-GREASE	2	101-177	113-253	
1-4	13	126775-017 INNER YOKE (OUTER TUBE)	1	101-177	113-253	
1-4	14	126775-019 ROLL PIN	1	101-177	113-253	
1-4	15	126775-021 TELESCOPING MEMBER (OUTER)	1	101-177	113-253	
1-4	16	126775-023 BEARING RING (OUTER TUBE)	1	101-177	113-253	
1-4	17	126775-025 SAFETY GUARD (OUTER)	1	101-177	113-253	
1-4	18	126775-027 SAFETY GUARD (INNER)	1	101-177	113-253	
1-4	19	126775-029 BEARING RING (INNER TUBE)	1	101-177	113-253	
1-4	20	126775-031 TELESCOPING MEMBER (INNER)	1	101-177	113-253	
1-4	21	126775-033 ROLL PIN	1	101-177	113-253	
1-4	22	126775-035 INNER YOKE (OUTER TUBE)	1	101-177	113-253	
1-4	23	126775-037 SLIP CLUTCH ASSEMBLY	1	101-177	113-253	
1-4	24	126775-039 ZERK-GREASE	1	101-177	113-253	
1-4	25	126775-041 HOUSING WITH YOKE	1	101-177	113-253	
1-4	26	126775-043 RATCHET WITH SPRING	12	101-177	113-253	
1-4	27	126775-045 PUSH PIN SET	1	101-177	113-253	
1-4	28	126775-047 HUB WITH QD	1	101-177	113-253	
1-4	29	126775-049 LOCK WASHER	1	101-177	113-253	
1-4	30	126775-051 CIRCLIP	1	101-177	113-253	
1-4	31	126775-053 CHAIN	1	101-177	113-253	

DRIVELINE ASSEMBLY

FIGURE 1-4A



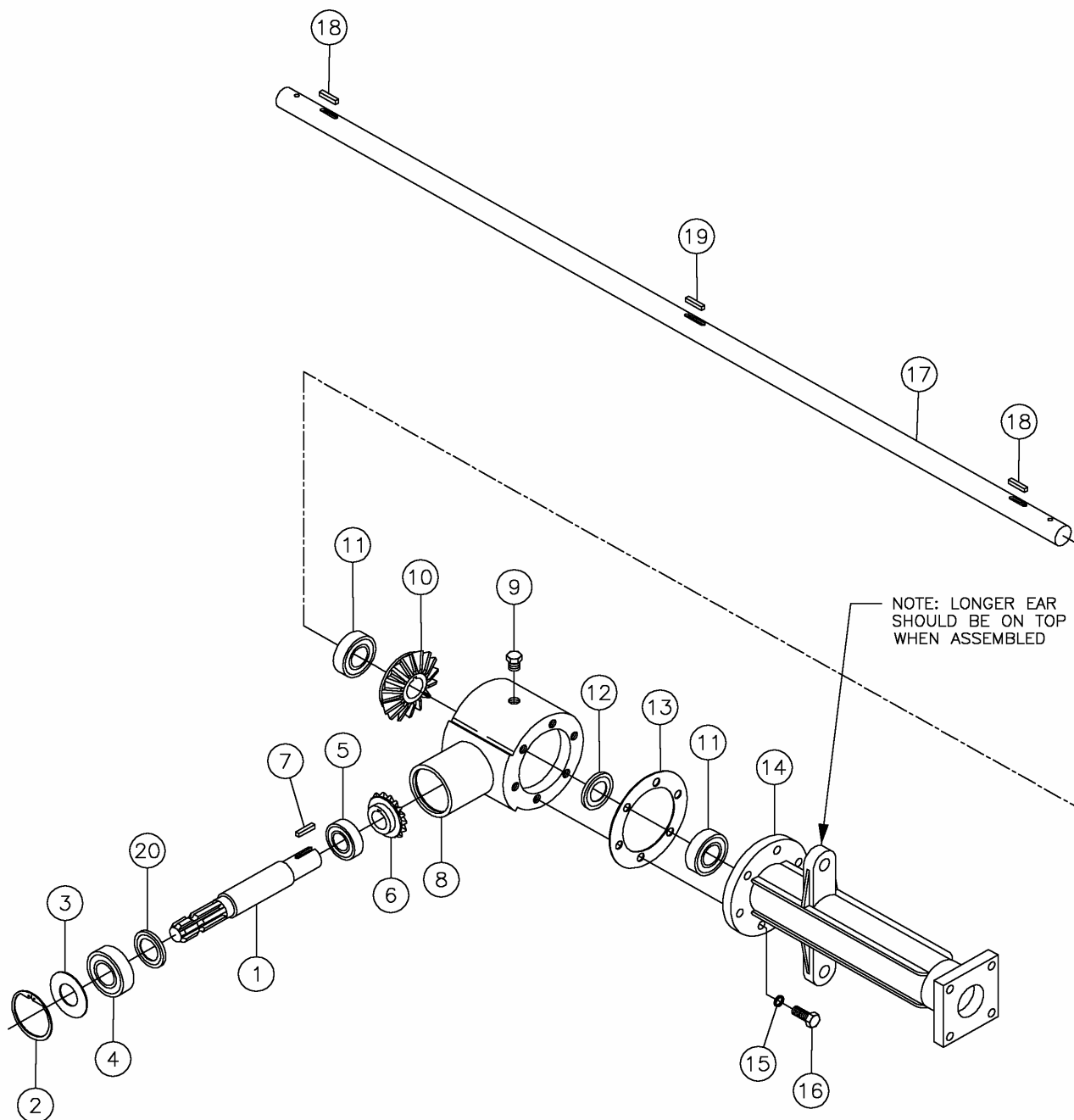
DRIVELINE ASSEMBLY

FIGURE 1-4A

REF. NO.	PART NO.	DESCRIPTION	QTY.	SERIAL NO.		REMARKS
				TD120	TD200	
1-4A	1	502700-001	1	178-278	254-469	
		502700-002	1	279 & UP	470 & UP	
1-4A	2	126776-001	1	178 & UP	254 & UP	
1-4A	3	126778-001	1	178 & UP	254 & UP	
1-4A	4	2326-902	1	178 & UP	254 & UP	
1-4A	5	502700-013	1	178 & UP	254 & UP	
1-4A	6	502700-015	1	178 & UP	254 & UP	
1-4A	7	502700-017	1	178 & UP	254 & UP	
1-4A	8	502700-019	2	178 & UP	254 & UP	
1-4A	9	502700-021	1	178 & UP	254 & UP	
1-4A	10	502700-023	1	178 & UP	254 & UP	
1-4A	11	502700-025	1	178 & UP	254 & UP	
1-4A	12	502700-029	1	178 & UP	254 & UP	
1-4A	13	502700-031	2	178 & UP	254 & UP	
1-4A	14	502700-033	1	178-278	254-469	
1-4A	15	502700-035	1	178-278	254-469	
1-4A	16	502700-027	1	178 & UP	254 & UP	
1-4A	17	502700-037	1	178 & UP	254 & UP	
1-4A	18	502700-039	1	178 & UP	254 & UP	
1-4A	19	502700-041	1	178 & UP	254 & UP	
1-4A	20	502700-043	1	178 & UP	254 & UP	
1-4A	21	502700-045	1	178 & UP	254 & UP	
1-4A	22	502700-047	1	178 & UP	254 & UP	
1-4A	23	502700-049	1	178 & UP	254 & UP	
1-4A	24	502700-051	1	178 & UP	254 & UP	
1-4A	25	502700-053	1	178 & UP	254 & UP	
1-4A	26	502700-055	16	178 & UP	254 & UP	
1-4A	27	502700-057	1	178 & UP	254 & UP	
1-4A	28	502700-059	1	178 & UP	254 & UP	
1-4A	29	502700-061	1	178 & UP	254 & UP	
1-4A	30	502700-063	1	178 & UP	254 & UP	
1-4A	31	502700-062	1	279 & UP	470 & UP	
1-4A	32	502700-069	1	279 & UP	470 & UP	
1-4A	33	502700-064	1	279 & UP	470 & UP	
1-4A	34	502700-065	1	279 & UP	470 & UP	
1-4A	35	502700-066	1	279 & UP	470 & UP	
1-4A	36	502700-067	3	279 & UP	470 & UP	
1-4A	37	502700-068	1	279 & UP	470 & UP	
1-4A	38	502700-070	2	178 & UP	254 & UP	
		502700-003		178-278	254-469	
		502700-005		178-278	254-469	

WING ASSEMBLY - INTERNAL

Figure 1-5



WING ASSEMBLY - INTERNAL

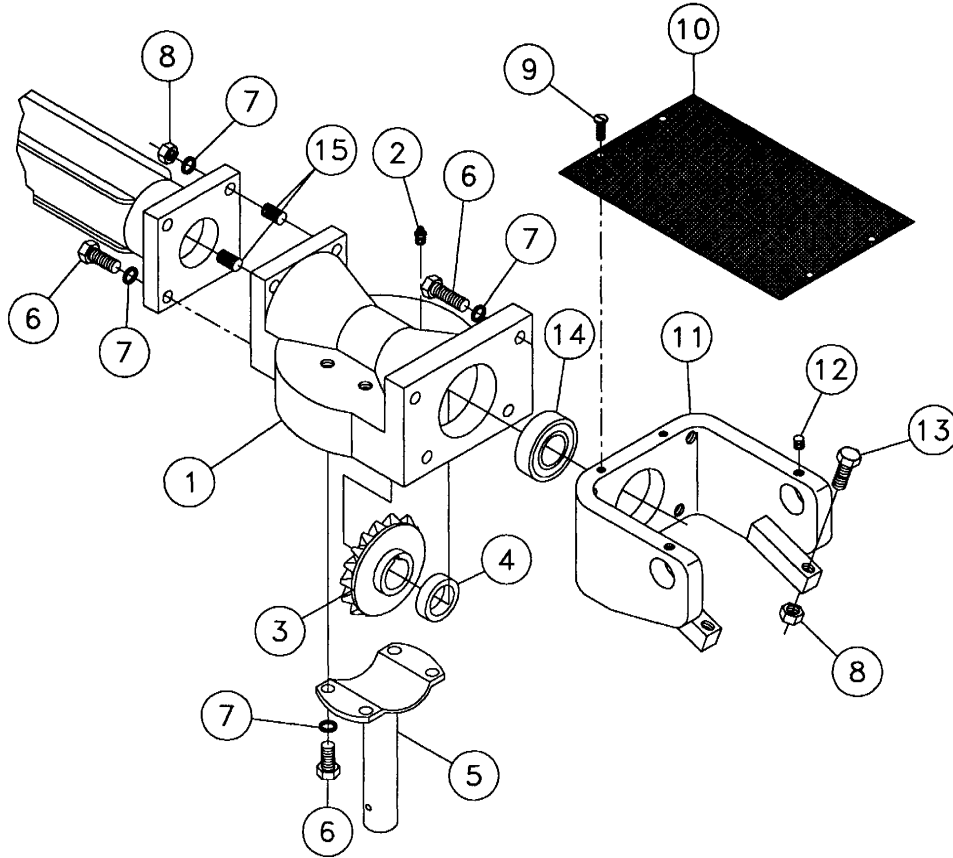
Figure 1-5

REF. NO.	PART NO.	DESCRIPTION	QTY.		SERIAL NO.		REMARKS
			TD120	TD200	TD120	TD200	
1-5	1	126804-001	1	1	101-568	101-1281	
		510500-391	1	1	569 & UP	1282 & UP	
1-5	2	126805-001	1	1			
1-5	3	126806-001	1	1			
1-5	4	126807-001	1	1			
1-5	5	126808-001	1	1	101-568	101-1281	
		510500-397	1	1	569 & UP	1282 & UP	
1-5	6	126809-001	1	1			
1-5	7	126810-001	1	1			
1-5	8	126811-001	1	1			
1-5	9	126812-001	2	2			
1-5	10	126827-001	2	2			
1-5	11	126814-001	2	2			
1-5	12	126815-001	1	1			
1-5	13	126816-001	2	2			
1-5	14	126817-001	-	2		101-1281	
		510500-395	-	2		1282 & UP	
		131074-001	2	-	101-568		
		510500-394	2	-	569 & UP		
1-5	15	115641-001	12	12			
1-5	16	127037-001	10	10			
1-5	17	126823-001	-	1		101-1281	
		510500-393	-	1		1282 & UP	
		131073-001	1	-			
1-5	18	126826-001	2	2			
1-5	19	126825-001	1	1	101-568	101-1281	
		510500-390	1	1	569 & UP	1282 & UP	
1-5	20	510500-398	1	1	569 & UP	1282 & UP	

- DOES NOT APPLY TO THIS MODEL

INTERNAL BOX ASSEMBLY - TD200

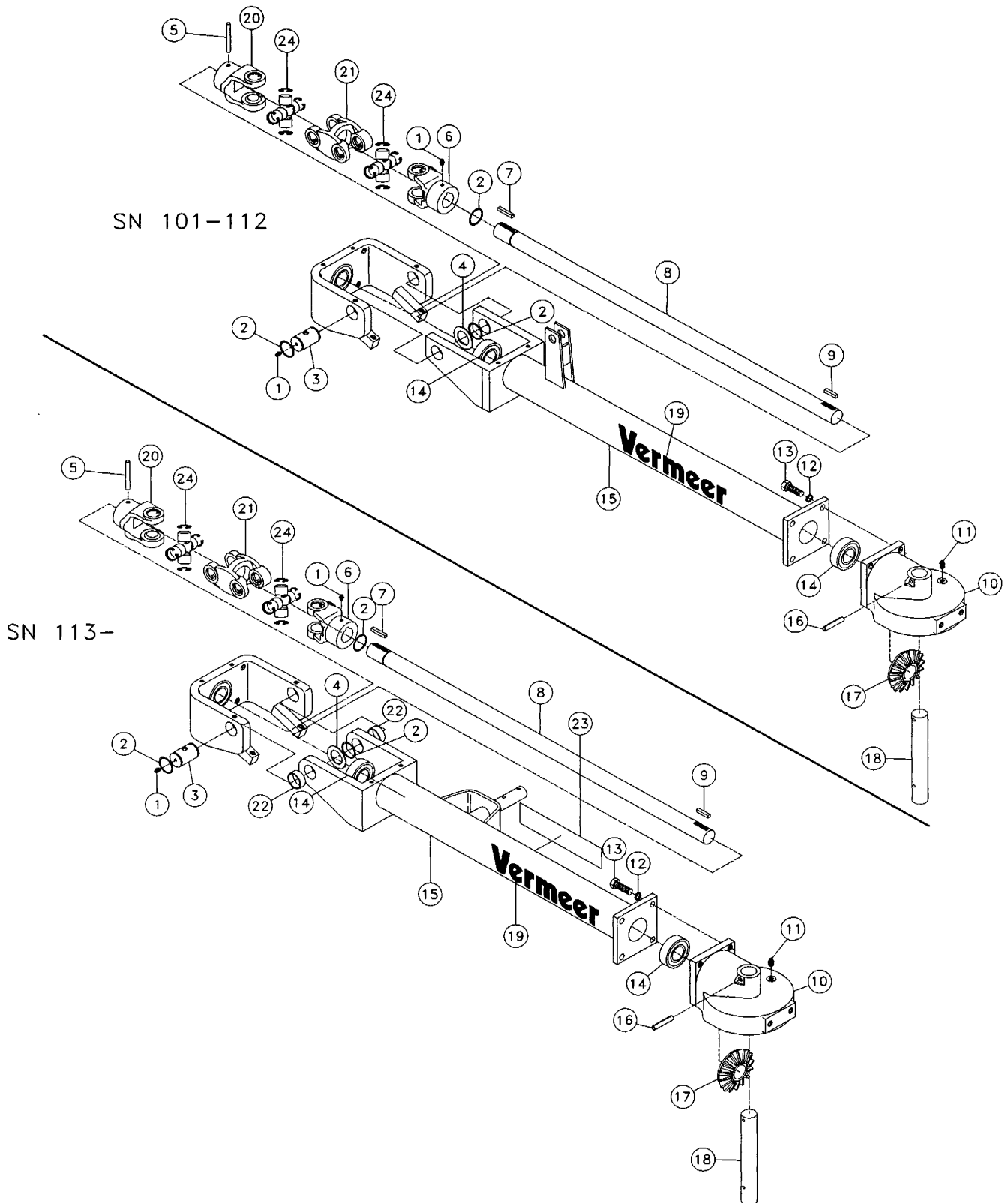
Figure 1-6



REF. NO.	PART NO.	DESCRIPTION	QTY.	SERIAL NO.	REMARKS
1-6	1	126820-001	BOX - INT	2	
1-6	2	126819-001	ZERK - MA10 ST. GREASE	2	
1-6	3	131078-001	CONICAL GEAR Z-17	2	
1-6	4	126821-001	SPACER	2	
1-6	5	126822-001	PIVOT	2	
1-6	6	126795-001	SCREW TE M12X35	2	
1-6	7	115641-001	WASHER M12	24	
1-6	8	126780-001	NUT - MA12	10	
1-6	9	126828-001	SCREW - MA8 X 20	8	
1-6	10	126829-001	RUBBER PROTECTION	2	
1-6	11	127039-001	SUPPORT - INTERNAL	2	
1-6	12	127040-001	HEX SOC. SCREW CONE 8 X 16	2	
1-6	13	126798-001	SCREW - M12 X 45	4	
1-6	14	126814-001	BEARING	2	
1-6	15	501883-001	STUD 12MM	4	

EXTERNAL BOX ASSEMBLY

Figure 1-7



EXTERNAL BOX ASSEMBLY

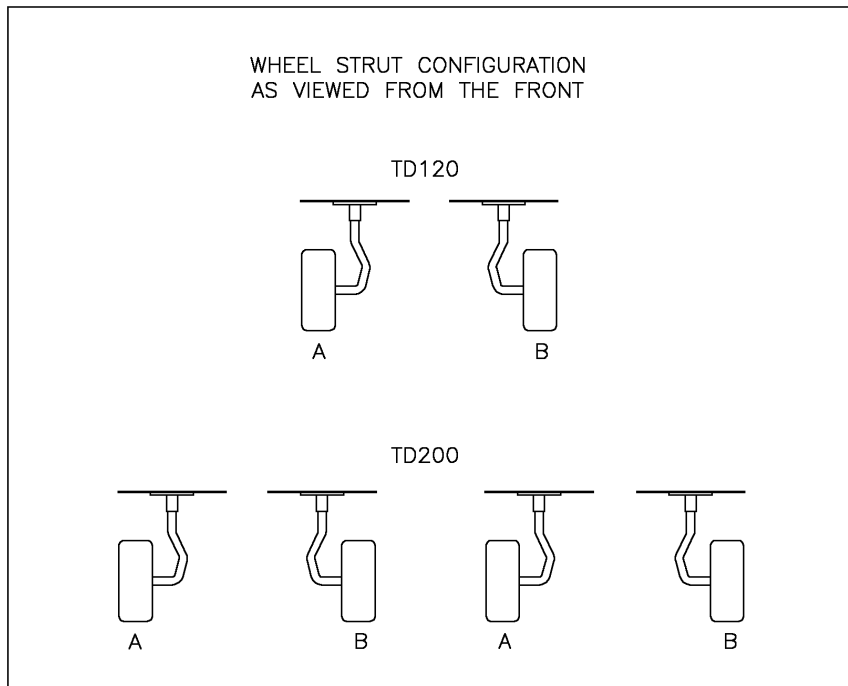
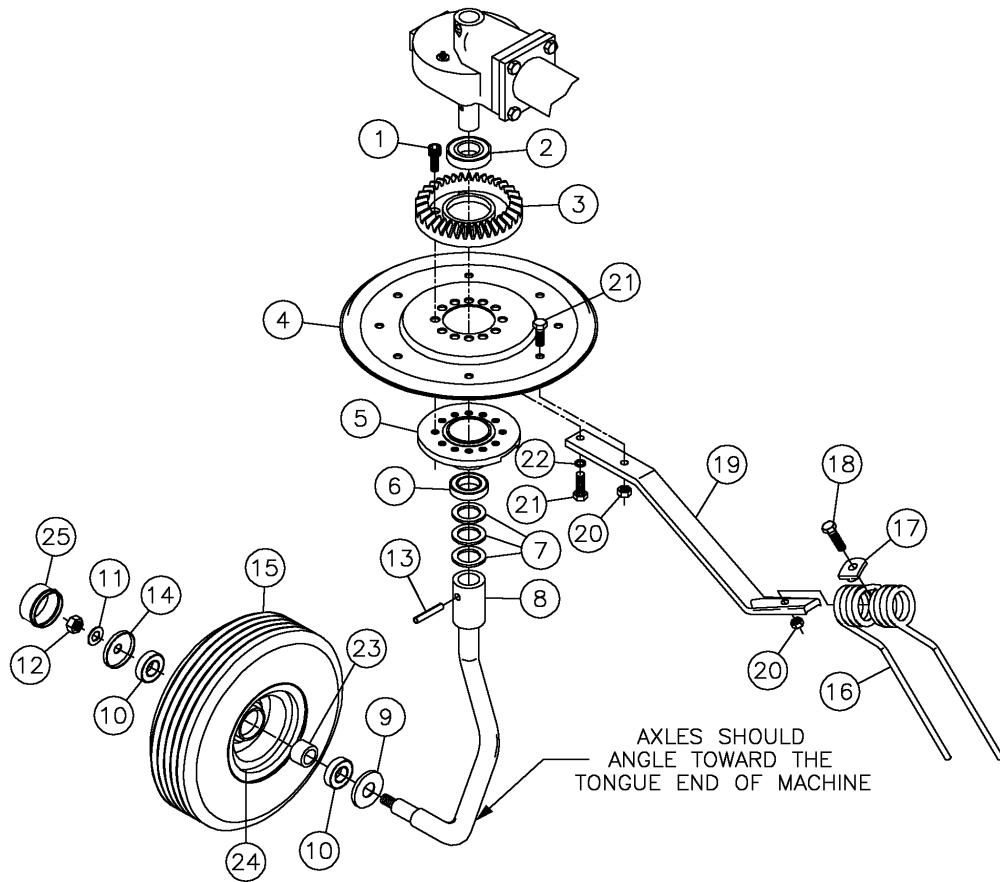
Figure 1-7

REF. NO.	PART NO.	DESCRIPTION	QTY.		SERIAL NO.		REMARKS
			TD120	TD200	TD120	TD200	
1-7	1	127041-001	ZERK-MA6 ST. GREASE	-	4		
1-7	2	127042-001	SNAP RING 30	-	8		
1-7	3	127045-001	PIVOT	-	4		
1-7	4	127043-001	WASHER -30X62X6	-	4		
1-7	5	501808-001	ELASTIC PIN 10X70	-	2		
1-7	6	506259-001	FORK EXTERNAL W/GREASER	-	2		SEPARATED COMPONENTS
1-7	7	126825-001	KEY-7X8X40	-	2		
1-7	8	127038-001	SHAFT-EXT (TD200)	-	2		
1-7	9	126826-001	KEY-7X8X30	-	2		
1-7	10	127036-001	BOX-EXT	2	2		
1-7	11	126819-001	ZERK-MA10 ST. GREASE	2	2		
1-7	12	115641-001	WASHER M12	8	8		
1-7	13	127037-001	SCREW MA 12X30	8	8		
1-7	14	126814-001	BEARING	4	4		
1-7	15	126831-001	WING-EXT. (L.H.) (SHOWN)	-	1		101-112
		131081-001	WING EXTENSION-RH (SHOWN)	-	1		113 & UP
		131080-001	WING-EXTENSION (L.H.) (SHOWN)	-	1		113 & UP
1-7	16	127035-001	ELASTIC PIN 10X55	2	2		
1-7	17	131078-001	CONICAL GEAR Z-17	2	2		
1-7	18	126833-001	SHAFT-SHORT	2	2		
1-7	19	2326-621	DECAL VERMEER 2 3/8 X 1 7/8	-	2		
1-7	20	506257-001	FORK EXTERNAL F/DOUBLE JOINT	-	2		SEPARATED COMPONENTS
1-7	21	506258-001	DOUBLE FORK "H" F/DOUBLE JOINT	-	2		SEPARATED COMPONENTS
1-7	22	506271-001	BUSHING-30X35X16 GT2156		4		
1-7	23	7000B-068	DECAL-RED REFLECTOR		2		
1-7	24	506258-002	CROSS KIT - YOKE		4		SEPARATED COMPONENTS

- DOES NOT APPLY TO THIS MODEL

DISC/AXLE ASSEMBLY

Figure 1-8



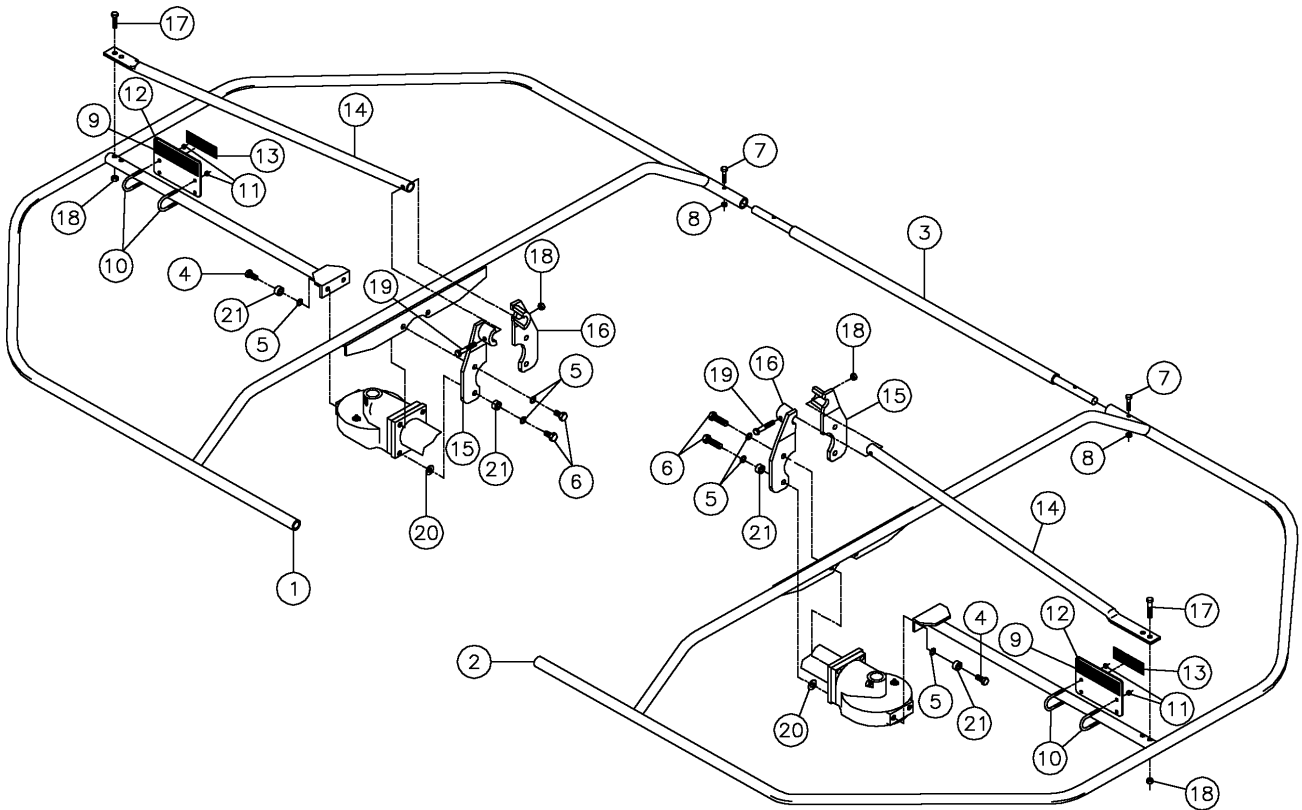
DISC/AXLE ASSEMBLY

Figure 1-8

REF. NO.	PART NO.	DESCRIPTION	QTY.		SERIAL NO.		REMARKS
			TD120	TD200	TD120	TD200	
1-8	1	127046-001	8	16			
1-8	2	126807-001	2	4			
1-8	3	127047-001	2	4			
1-8	4	129663-001	2	4			
1-8	5	127048-001	2	4			
1-8	6	127050-001	2	4			
1-8	7	127051-001	A/R	A/R			
1-8	8	131068-001	1	2			
		127052-001	1	2			
1-8	9	127053-001	2	4			
1-8	10	127054-001	4	8			
1-8	11	127057-001	2	4			
1-8	12	126784-001	2	4			
1-8	13	127035-001	2	4			
1-8	14	131069-001	2	4	101-758	101-1617	
1-8	15	127056-001	2	4			
1-8	16	127062-001	12	24			
1-8	17	127061-001	12	24			
1-8	18	127063-001	12	24			
1-8	19	127059-001	-	24			
		131076-001	12	-			
1-8	20	126780-001	12	24			
1-8	21	126787-001	24	48			
1-8	22	115641-001	12	24			
1-8	23	501884-001	2	4			
1-8	24	501882-001	2	4	101-758	101-1617	
		510501-080	2	4	759 & UP	1618 & UP	
1-8	25	510501-079	2	4	759 & UP	1618 & UP	
		127058-001			101-758	101-1617	
		127055-001			101-758	101-1617	
		510501-084			759 & UP	1618 & UP	

PROTECTION BAR ASSEMBLY - TD120

Figure 1-9



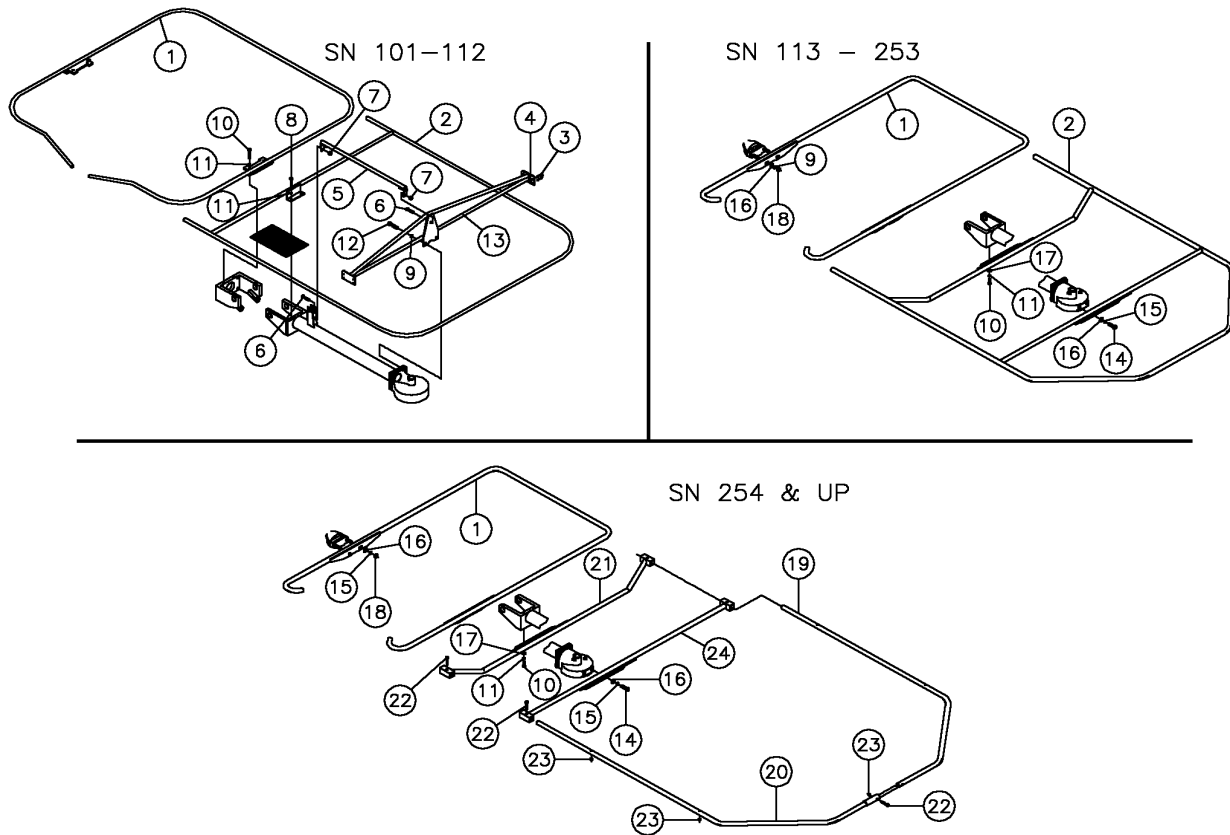
PROTECTION BAR ASSEMBLY - TD120

Figure 1-9

<u>REF. NO.</u>	<u>PART NO.</u>	<u>DESCRIPTION</u>	<u>QTY.</u>	<u>SERIAL NO.</u>	<u>REMARKS</u>
1-9	1	131070-001 PROTECTION BAR, R	1	101-178	
		500571-001 PROTECTION BAR ZINC, R	1	179-278	
		509334-008 TD120 RH GUARD ZN	1	279 & UP	
1-9	2	131071-001 PROTECTION BAR, L	1	101-178	
		500572-001 PROTECTION BAR ZINC, L	1	179-278	
		509334-009 TD120 LH GUARD ZN	1	279 & UP	
1-9	3	131072-001 PROTECTION BAR, CENTER	1	101-178	
		500573-001 PROTECTION BAR ZINC, CENTER	1	179-278	
		509334-004 TD120 CENTRAL GUARD ZN	1	279 & UP	
1-9	4	507093-025 SCREW-HFS, M12-1.75 X 25, ZY	4	101-253	
		507093-035 SCREW-HCS, M12-1.75 X 35, YZ	4	254 & UP	
1-9	5	506046-012 WASHER-FLAT, M12, YZ	8	101-253	
		508483-012 WASHER, EXTERNAL SERRATED LOCK, M12	10	254 & UP	
1-9	6	507093-050 SCREW-HCS, M12-1.75 X 50, YZ	4	101-253	
		507093-055 SCREW-HCS, M12-1.75 X 55, YZ	8	254 & UP	
1-9	7	506032-040 SCREW-HCS, M8-1.25 X 40, YZ	2		
1-9	8	506043-008 NUT-HEX, NYL, M8-1.25, YZ	2		
1-9	9	131052-001 PLATE-DECAL	2		
1-9	10	131055-001 U-BOLT-1/4-20 1.5 CTOC 2.25 DP	4		
1-9	11	103201-001 NUT-1/4-20NC NYLON INSERT LOCK	8		
1-9	12	70000-722 DECAL-AMBER REFLECTOR	2		
		7000B-069 DECAL-AMBER REFLECTOR	2	503 & UP	
1-9	13	70000-170 DECAL-RED REFLECTOR	2		
		7000B-068 DECAL-RED REFLECTOR	2	503 & UP	
1-9	14	507812-001 TUBE-MOUNT	2	254 & UP	
1-9	15	507816-001 MOUNT-SUPPORT BRACKET	2	254 & UP	
1-9	16	507817-001 MOUNT-SUPPORT BRACKET	2	254 & UP	
1-9	17	507092-045 SCREW-HCS, M10-1.50 X 45, YZ	4	254 & UP	
1-9	18	506043-010 NUT-HEX, NYL, M10-1.50, YZ	6	254 & UP	
1-9	19	507092-060 SCREW-HCS, M10-1.50 X 60, YZ	2	254 & UP	
1-9	20	506046-012 WASHER-FLAT, M12, YZ	4	254 & UP	
1-9	21	509334-005 SPACER D=22X3 L=12	8	254 & UP	

PROTECTION BAR ASSEMBLY- TD200

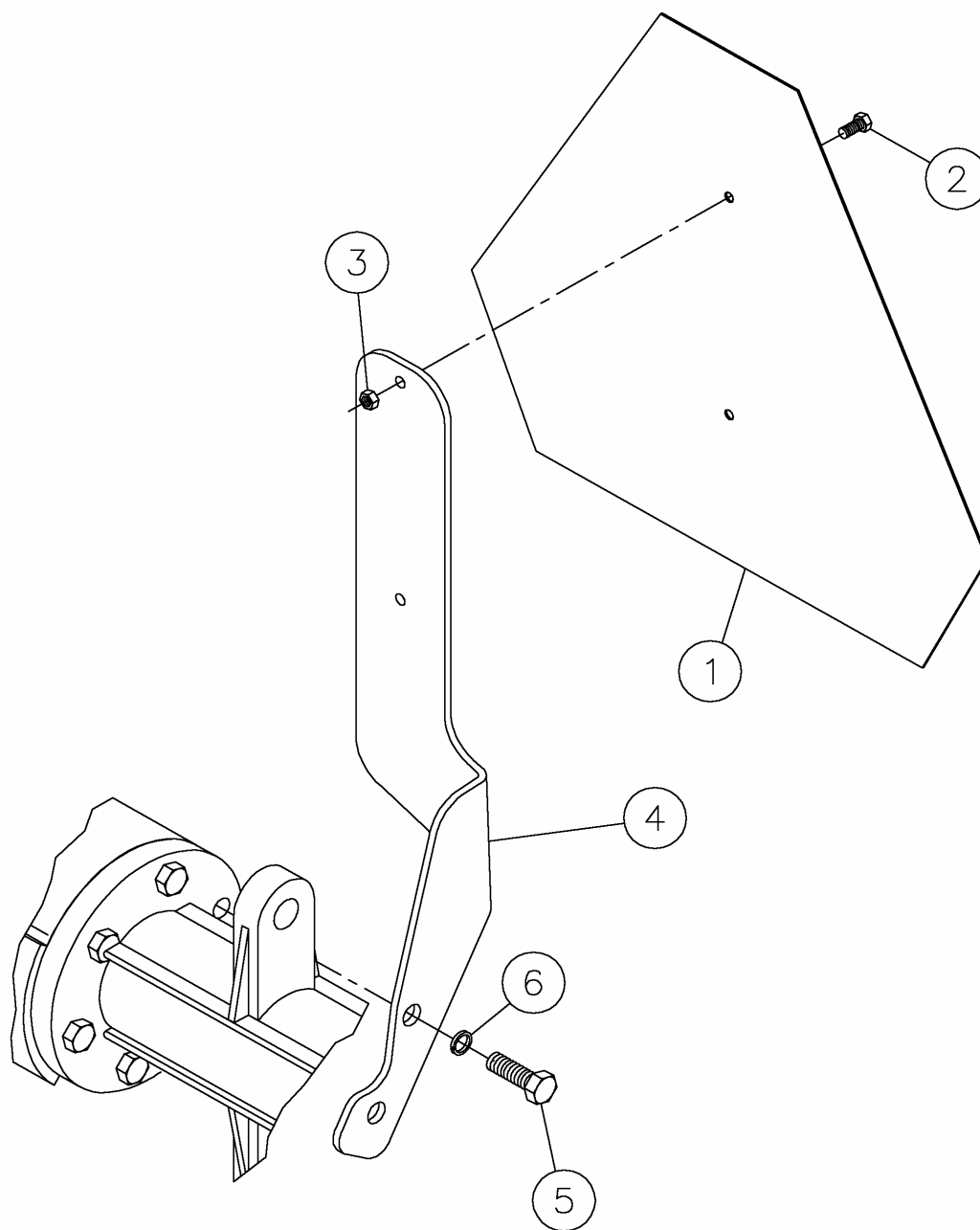
Figure 1-10



REF. NO.	PART NO.	DESCRIPTION	QTY.	SERIAL NO.	REMARKS
1-10	1	122395-001 TUBE-CENTER WELDMENT	1	101-112	
		122395-001 TUBE-CENTER WELDMENT	1	113-253	
		500563-001 TUBE-CENTER WELDMENT, ZINC	1	254 & UP	
1-10	2	122408-001 TUBE-WELDMENT LEFT (SHOWN)	1	101-112	
		131082-001 PROTECTION BAR-RH TD200	1	113-253	
		131083-001 PROTECTION BAR LH TD200(SHOWN)	1	113-253	
		122404-001 PROTECTION BAR-RH	1	101-112	
1-10	3	122441-001 U-BOLT-1/4-20 W/NUTS .75ID X 1.25	8	101-112	
1-10	4	403-001 NUT-1/4 NC SLTL	16	101-112	
1-10	5	122418-001 BRACE-TOP SHORT	2	101-112	
1-10	6	354-010 BOLT-3/8-16 X 1GRD #5 HEX	2	101-112	
1-10	7	1809-003 NUT- 3/8 SM FLGE T.L.	4	101-112	
1-10	8	53654-001 BOLT- 8M X 30M METRIC	4	101-112	
1-10	9	480-011 WASHER-1/2 S/T LOCK	4	101-112	
1-10	10	506032-035 SCREW-HCS,M8-1.25X35, 8.8,YZ,D931,PT	4		
1-10	11	506047-008 WASHER-LOCK, M8,YZ,D127B	8		
1-10	12	507093-035 SCREW-HCS,M12-1.75X35,8.8,YZ,ISO4017, FT	4	101-112	
1-10	13	122422-001 BRACKET-LEFT MIDDLE BRACE (SHOWN)	1	101-112	
		122421-001 BRACKET-RIGHT MIDDLE BRACE	1	101-113	
1-10	14	507093-025 SCREW-HCS,M12-1.75X25,8.8,YZ,ISO4017, FT	4		
1-10	15	506047-012 WASHER-LOCK,M12,YZ,D127B	8		
1-10	16	506046-012 WASHER-FLAT,M12,YZ,D125A	6		
1-10	17	506046-010 WASHER-FLAT,M10,YZ,D125A	4		
1-10	18	506043-012 NUT-HEX,NYL,M12-1.75,YZ,985	4		
1-10	19	500564-001 TUBE-OUTSIDE REAR, ZINC L=1930	2	254 & UP	
1-10	20	500565-001 TUBE-OUTSIDE FRONT ZINC L=2000	2	254 & UP	
1-10	21	500570-001 TUBE-INSIDE LEFT, ZINC	1	254 & UP	
		500574-001 TUBE-INSIDE RIGHT, ZINC	1	254 & UP	
1-10	22	506032-050 SCREW-HCS,M8-1.25X50,8.8,YZ,D931,PT	10	254 & UP	
1-10	23	506043-008 NUT-HEX,NYL,M8-1.25,YZ,D985	10	254 & UP	
1-10	24	500568-001 TUBE-OUTSIDE LEFT, ZINC	1	254 & UP	
		500569-001 TUBE-OUTSIDE RIGHT, ZINC	1	254 & UP	

SLOW MOVING VEHICLE SIGN ASSEMBLY

Figure 1-11



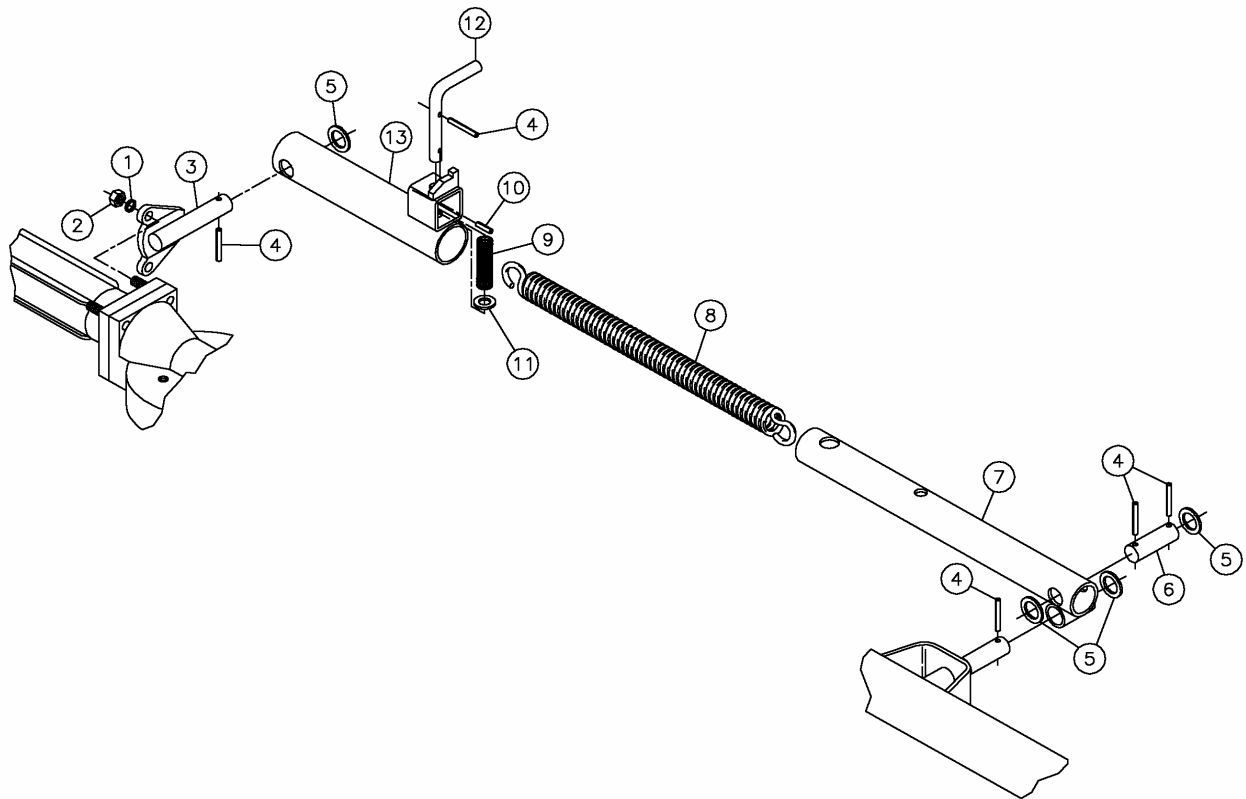
SLOW MOVING VEHICLE SIGN ASSEMBLY

Figure 1-11

REF. NO.	PART NO.	DESCRIPTION	QTY.		SERIAL NO.		REMARKS
			TD120	TD200	TD120	TD200	
1-11	1	1836-001					
		SIGN-#2 SMV PRE-PUNCHED METAL	1	1			
1-11	2	350-006					
		BOLT-1/4-20X3/4" GR5 HEX	2	2			
		506031-035					
		SCREW-HCS,M6-1.00X35,8,8,YZ	2	2			
1-11	3	103201-001					
		NUT-1/4-20 NYLON INSERT LOCK	2	2			
		128478-001					
		NUT-M6 NYLOCK	2	2			
1-11	4	131034-001					
		MOUNT-SMV SIGN	1	1			
1-11	5	126795-001					
		SCREW-TE M12X35	2	2			
1-11	6	115641-001					
		WASHER-M12	2	2			

MANUAL SPRING LIFT ASSEMBLY - TD200

Figure 1-12



MANUAL SPRING LIFT ASSEMBLY - TD200

Figure 1-12

<u>REF. NO.</u>	<u>PART NO.</u>	<u>DESCRIPTION</u>	<u>QTY.</u>	<u>SERIAL NO.</u>	<u>REMARKS</u>
1-12	1	64108-001	WASHER-M12 LOCK	4	
1-12	2	126780-001	NUT-MA12	4	
1-12	3	130910-001	ARM-LIFT MOUNT	2	
1-12	4	510501-090	PIN-EXPANSION,6MMX40MM-YZ	10	
1-12	5	483-005	WASHER-1 1/2X1X14 GA. M.B.	8	
1-12	6	131051-001	PIN	2	
1-12	7	130906-001	TUBE-ARM LIFT INNER	2	
1-12	8	1789-133	SPRING-EXT.1.5ODX.25WIRE-20.75	2	
1-12	9	1803-193	SPRING-COMP..812ODX.082WIRE-3"	2	
1-12	10	510500-018	PIN-EXPANSION,6MMX30MM-YZ	2	
1-12	11	510336-699	WASHER-MCHBSHG-.63-.66X1.13-14GA-YZ	2	
1-12	12	130901-001	PIN-ARM LIFT	2	
1-12	13	130907-001	ARM-LIFT MOUNT OUTER	2	
		131061-001	ARM-LIFT ASSEMBLY (INC. ONE EACH OF REF. 4 & 9-13)	2	